



## Chester House Earnley Manor Close, Earnley

Guide Price £1,000,000



Henry Adams  
estate agents



# Chester House Earnley Manor Close

Earnley, Chichester

Situated on a quiet private road, this 4 bedroom detached bungalow offers a serene and secluded setting for those seeking a peaceful retreat.

The property features four generously proportioned bedrooms, offering comfortable and private spaces for all members of the household. Two of the bedrooms come complete with en-suite bathrooms.

For those looking to expand and customise the property to suit their needs, there is the exciting potential to extend into the loft (subject to obtaining the necessary planning permission).

Offered with vacant possession, this property is ready and waiting for its new owners to make it their own.

Council Tax band: F

Tenure: Freehold

EPC Energy Efficiency Rating: D

EPC Environmental Impact Rating: E

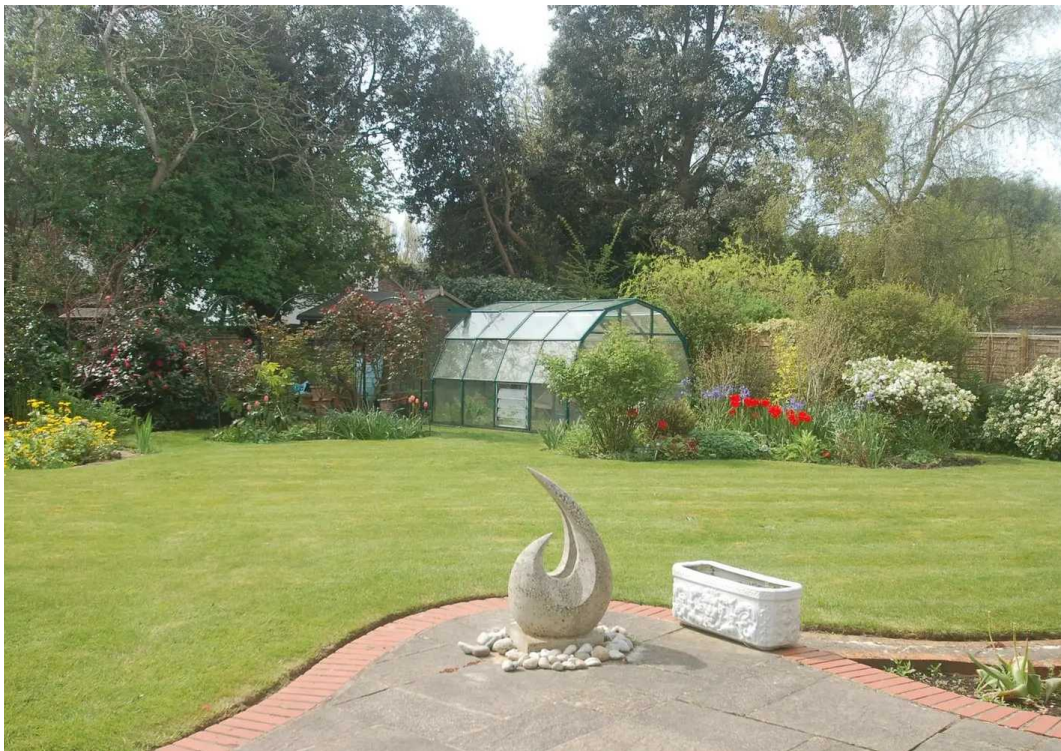
- On a Private Road
- South-Facing Garden
- Vacant Possession
- Rural Views
- Two En-Suite Bathrooms
- Potential to extend into loft (STPP)











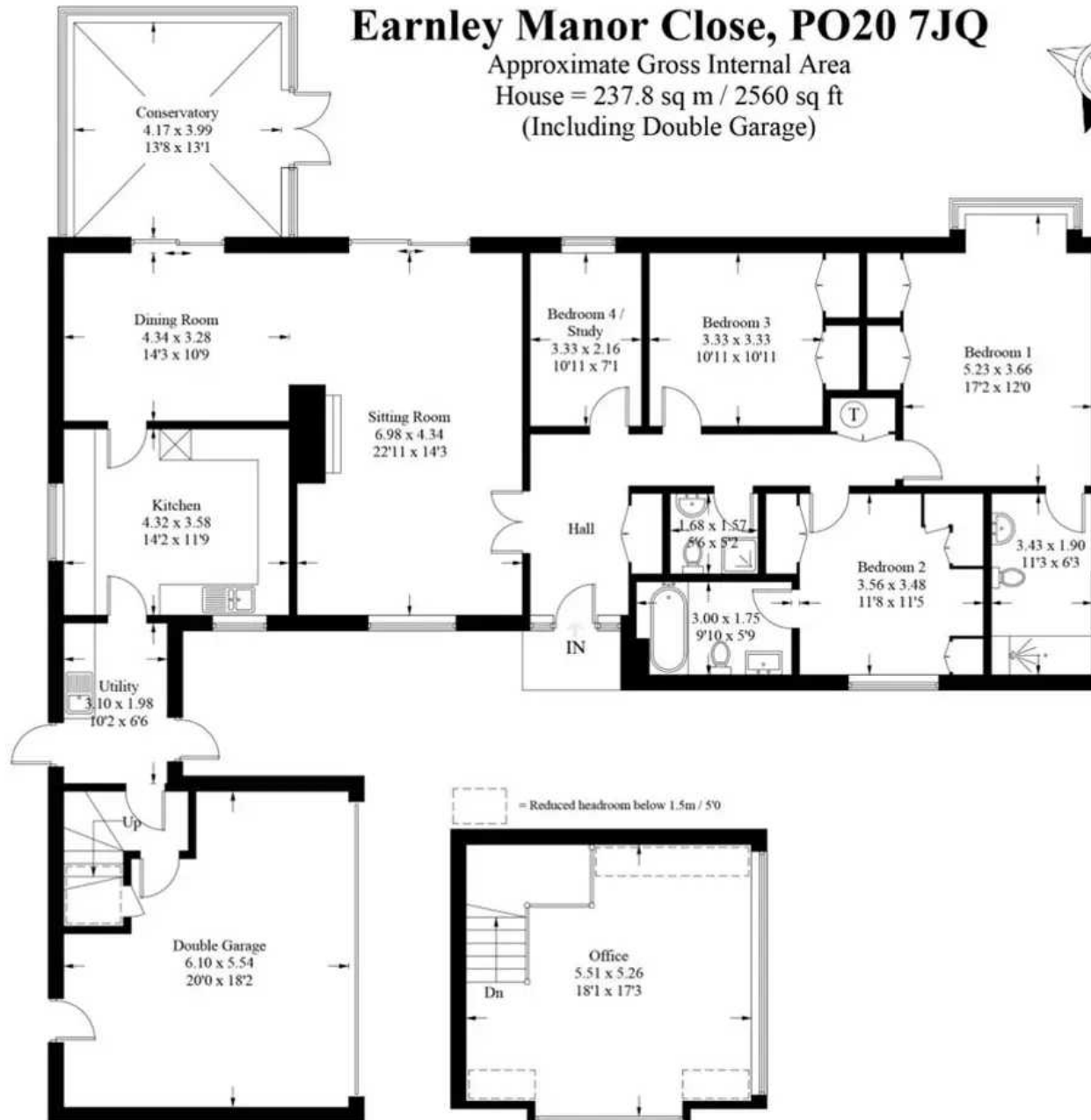


# Earnley Manor Close, PO20 7JQ

Approximate Gross Internal Area

House = 237.8 sq m / 2560 sq ft

(Including Double Garage)



**Ground Floor**

**First Floor**

These plans are for illustration purposes only as defined by RICS - Code of Measuring Practice.  
Not to scale. Created by Emzo Marketing



## Henry Adams – East Wittering

Henry Adams LLP, 14 Shore Road, East Wittering – PO20 8DZ

01243 672721

[eastwittering@henryadams.co.uk](mailto:eastwittering@henryadams.co.uk)

[www.henryadams.co.uk/](http://www.henryadams.co.uk/)

Agents Note – Our particulars are for guidance only and are intended to give a fair overall summary of the property. They do not form part of any contract or offer, and should not be relied upon as a statement or representation of fact. Measurements, areas and distances are approximate only. Photographs may include lifestyle shots and pictures of local views. No undertaking is given as to the structural condition of the property, or any necessary consents or the operating ability or efficiency of any service, system or appliance. Please ask if you would like further information, especially before you travel to the property.