



4 Sandringham Close, Bracklesham Bay

Guide Price £550,000



Henry Adams
estate agents

4 Sandringham Close

Bracklesham Bay, Chichester

Presenting a rare opportunity to acquire a generously sized three-bedroom detached bungalow in a popular location, just a short distance away from the beach, local shops, and convenient bus routes. This distinguished property features a sizeable garden, garage, and off-road parking facilities. Brimming with potential, the bungalow offers a blank canvas for those seeking to infuse their personal touch, as complete modernisation is required throughout.

The spacious interior comprises three bedrooms, providing ample accommodation for families or those in search of extra space. Boasting a desirable no forward chain status, this property ensures a seamless transaction for prospective buyers. With its prime position and proximity to essential amenities, this residence embodies the essence of convenient coastal living.

Council Tax band: D

Tenure: Freehold

- THREE BEDROOM DETACHED BUNGALOW
- LARGE GARDEN
- GARAGE & OFF-ROAD PARKING
- REQUIRING COMPLETE MODERNISATION
- NO FORWARD CHAIN
- NEAR THE BEACH, SHOPS AND LOCAL BUS ROUTE

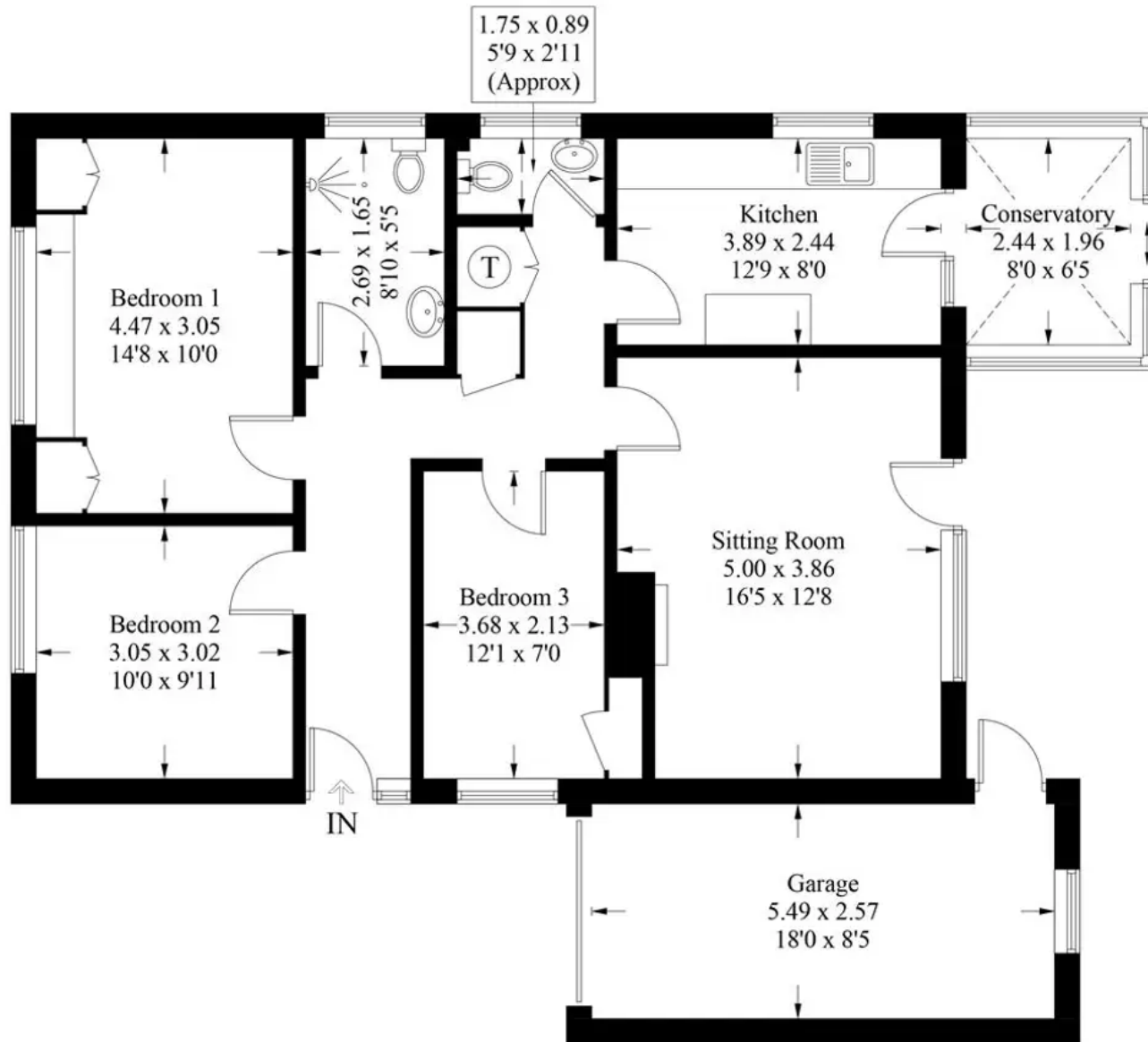


Sandringham Close, PO20 8HS

Approximate Gross Internal Area = 87.6 sq m / 943 sq ft

Garage = 14.1 sq m / 152 sq ft

Total = 101.7 sq m / 1095 sq ft



These plans are for illustration purposes only as defined by RICS - Code of Measuring Practice.
Not to scale. Created by Emzo Marketing



Henry Adams – East Wittering

Henry Adams LLP, 14 Shore Road, East Wittering – PO20 8DZ

01243 672721

eastwittering@henryadams.co.uk

www.henryadams.co.uk/

Agents Note – Our particulars are for guidance only and are intended to give a fair overall summary of the property. They do not form part of any contract or offer, and should not be relied upon as a statement or representation of fact. Measurements, areas and distances are approximate only. Photographs may include lifestyle shots and pictures of local views. No undertaking is given as to the structural condition of the property, or any necessary consents or the operating ability or efficiency of any service, system or appliance. Please ask if you would like further information, especially before you travel to the property.