



Enclosed in this brochure, you will discover the details of a new property listing, proudly presented by Net Lettings



104 LANDSEERE AVENUE, LONDON, E12 6HR

Four-Bedroom House

£2,800 per calendar month

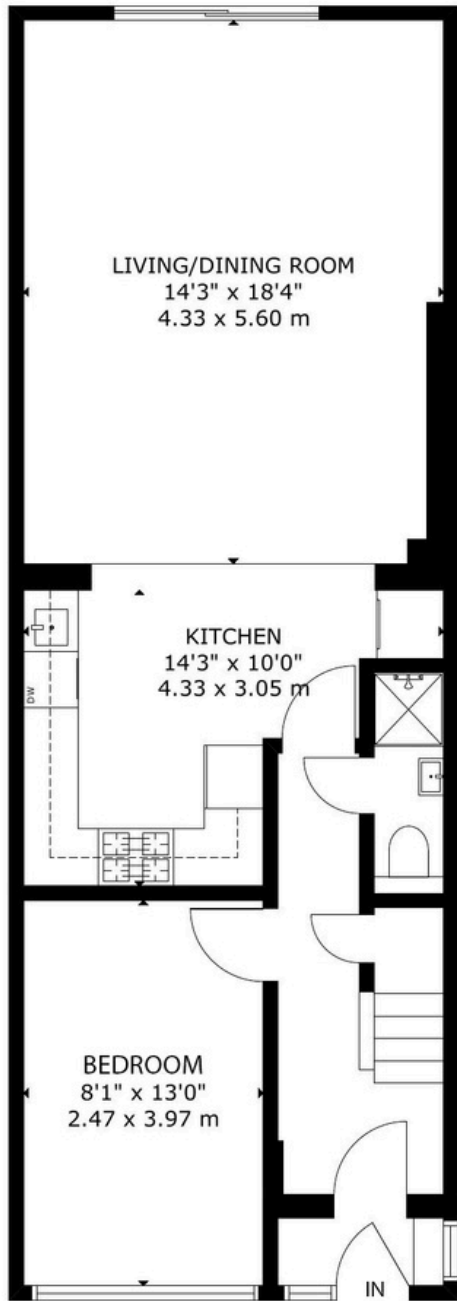
A newly refurbished & extended four-bedroom terraced house located in the highly popular area of East Ham. Located in close proximity from the train station, this house has been refurbished to the highest standard and is ideal for professionals or a young family.

- Newly Refurbished Home
- Open plan kitchen/living room
- Modern Neutral Decor
- Option of Furnished or Unfurnished
- Private Garden
- Excellent Transport Links

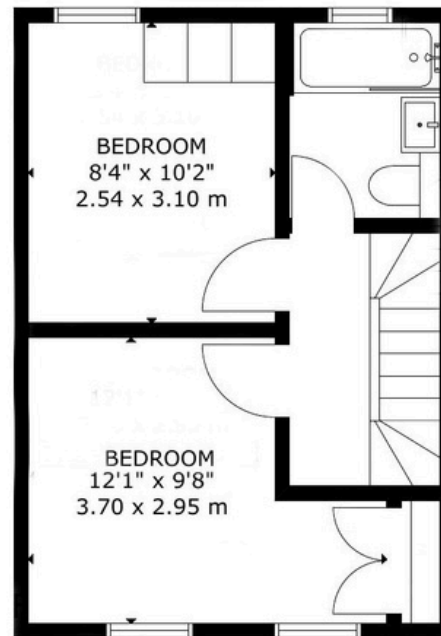
Viewings by appointment only
info@netlettings.com
0208 981 5551



LANDSEER AVENUE E12
GROSS INTERNAL AREA
TOTAL: 104.sq.m - 1119.sq.ft
under 1m eaves not included



GROUND FLOOR



FIRST FLOOR



SECOND FLOOR

Location & Transport

The area boasts excellent transport links, including the Manor Park railway station and easy access to major roads, making commuting to central London and other parts of the city seamless. Residents enjoy a variety of local amenities, including shops, restaurants, cafes, and markets that reflect the multicultural essence of the neighbourhood.

Manor Park is home to several parks and recreational areas, such as the scenic Wanstead Flats and the historic City of London Cemetery and Crematorium.

With a mix of Victorian and Edwardian homes, as well as modern developments, Manor Park offers diverse housing options to suit different tastes and budgets. The area is also known for its good schools and community facilities, making it an ideal place to raise a family.

 Ilford Station – 23 mins walk

 Manor Park Station – 22 mins walk

Liverpool Street; 44 mins via Public Transport





For more information or to arrange a viewing,
please get in touch with us at:

Phone: 0208 981 5551

Email: info@netlettings.com

311 Commercial Road, London, E1 2PS

We aim to make our particulars both accurate and reliable. However, they are not guaranteed; nor do they form part of an offer or contract. If you require clarification on any points then please contact us, especially if you're travelling some distance to view. Please note that appliances and heating systems have not been tested, and therefore no warranties can be given as to their good working order.