

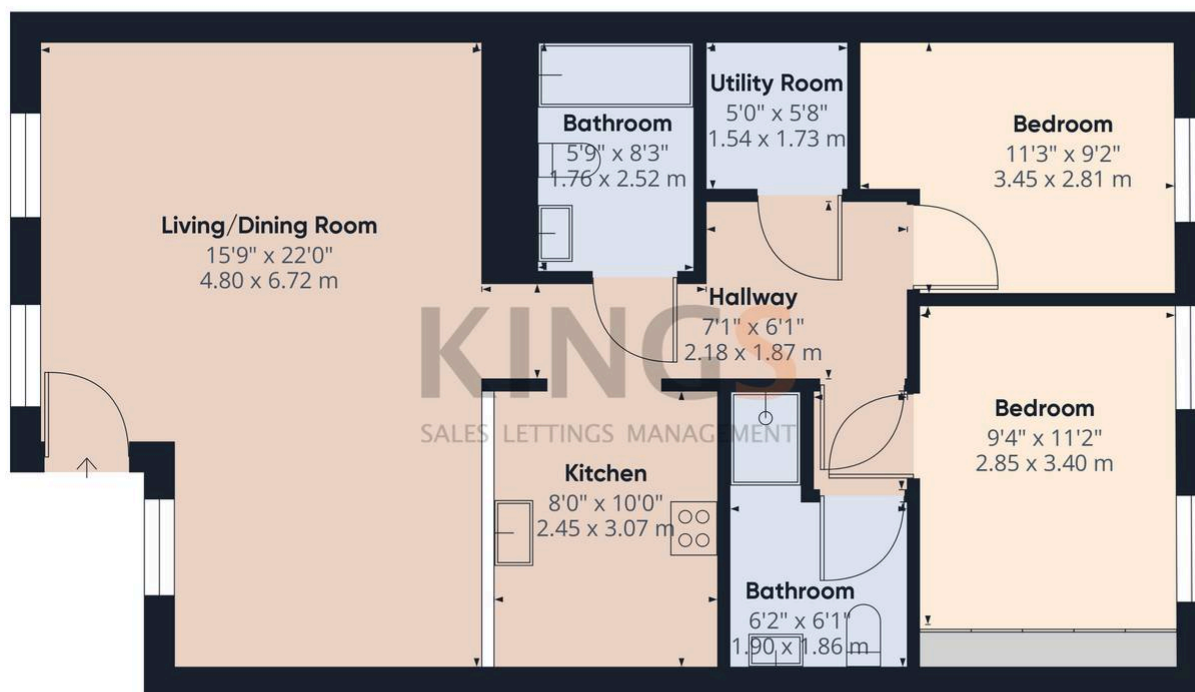


## Blackhorse House, 36 Salisbury Square

£375,000 | £1,600 pcm Share of Freehold

GROUND FLOOR MAISONETTE • EN-SUITE TO MASTER • FAMILY BATHROOM • OPEN PLAN LIVING • ALLOCATED PARKING • MOMENTS FROM TRAIN STATION • NHBC GUARANTEE REMAINING • SHARE OF FREEHOLD • EPC RATING - D

**KINGS**  
SALES LETTINGS MANAGEMENT



Approximate total area<sup>(1)</sup>  
824.57 ft<sup>2</sup>  
76.6 m<sup>2</sup>

(1) Excluding balconies and terraces

While every attempt has been made to ensure accuracy, all measurements are approximate, not to scale. This floor plan is for illustrative purposes only.

GIRAFFE360

