



## 10 Marigold Crescent, Shepshed

In Excess of £325,000

# 10 Marigold Crescent

Shepshed, Loughborough

This impressive detached property, built in 2020, sits on a superb plot and is in immaculate condition throughout. The property also has the benefit of 6 years remaining of the NHBC warranty. Nestled at the end of a quiet cul-de-sac, this home is just a short walk from open countryside and parks, and close to the village centre, which offers a range of local shops and facilities. The property is spacious and well-presented, ideal for young professionals or growing families looking to settle into village life.

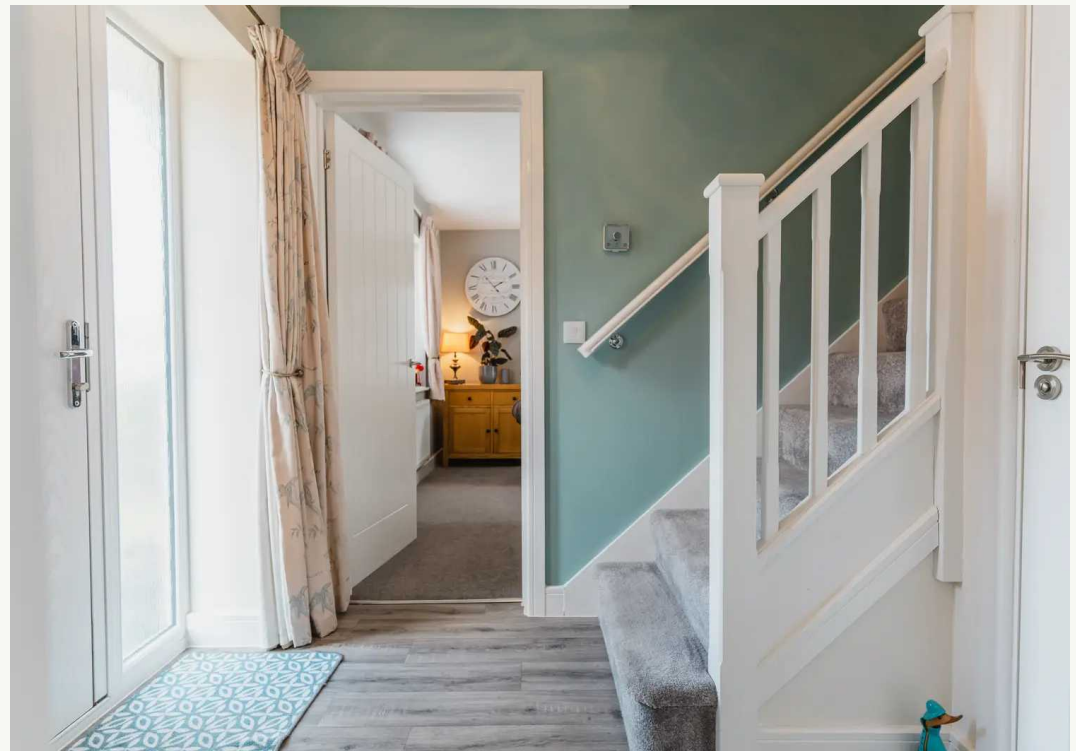
Entering through a spacious entrance hall, there is access to elegant living spaces, including a sitting room with a media wall featuring a realistic living flame fire, a modern kitchen/diner fitted with Smeg integrated appliances, a utility area providing additional storage, and a cloakroom with WC and space for further storage. The first floor includes a family bathroom, three double bedrooms with built-in wardrobes, a fourth single bedroom currently used as a study. The master bedroom also benefits from an en-suite shower room.

Outside, the property offers a single garage and driveway with parking for two cars. The stunning southeast-facing landscaped garden features a lawn, water feature, corner seating area, and a large patio area with lighting, perfect for enjoying the summer sun. This exceptional family home combines modern comfort with a desirable village location, making it the perfect choice for your next move.

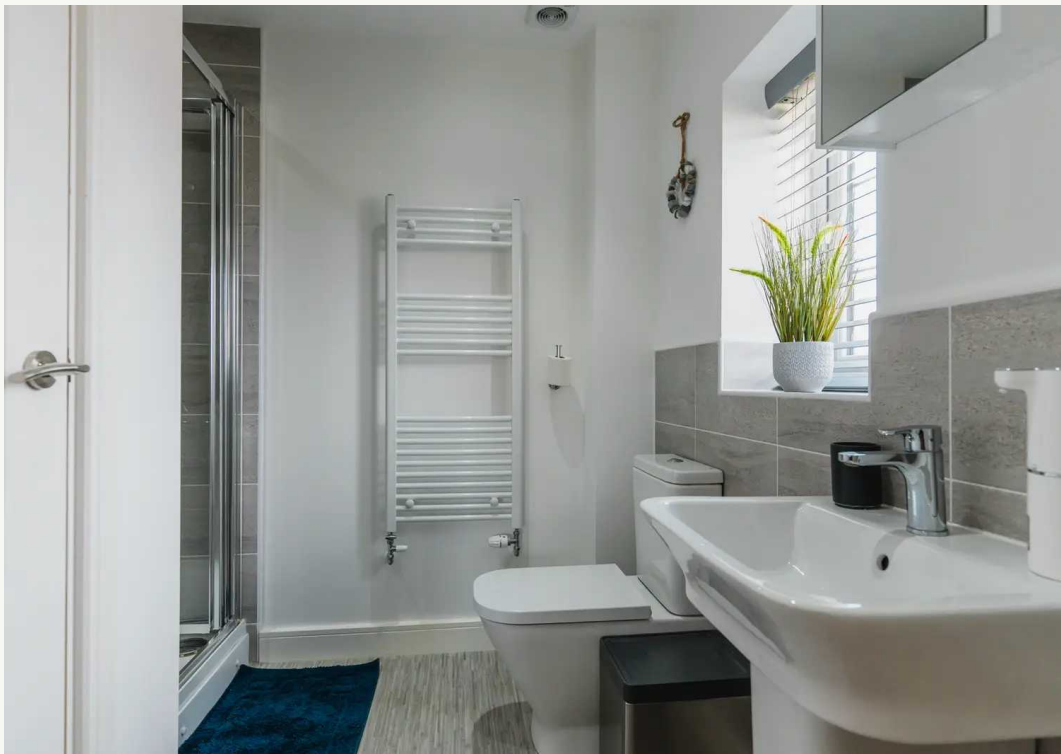


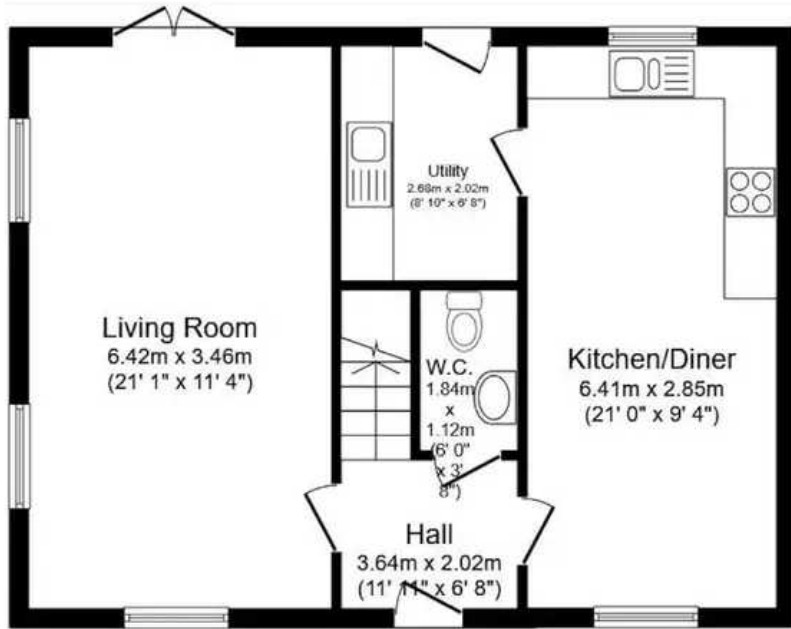




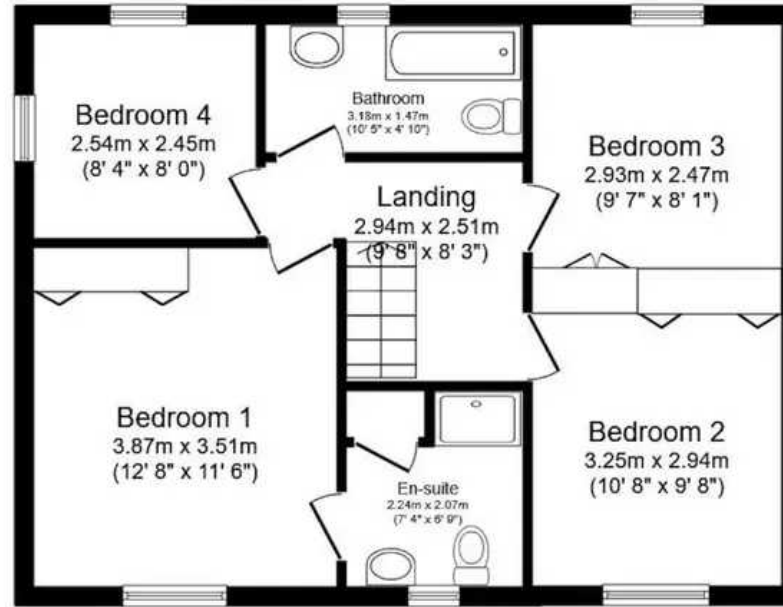




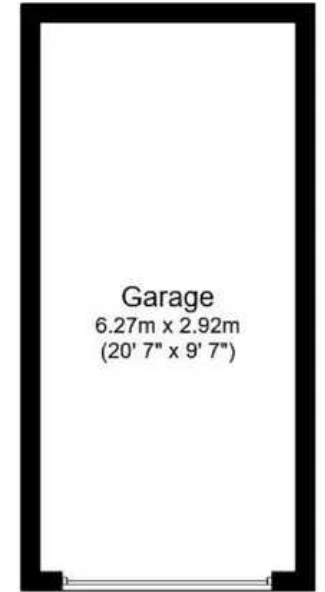




**Ground Floor**



**First Floor**



**Garage**





## Chloë Horton - Hortons

Unit 11, Brook Park Gaddesby Lane - LE7 4ZB

07718080766 · [chloe@hortons.co](mailto:chloe@hortons.co) · [hortons.co/partners/chloe-horton-2/](https://hortons.co/partners/chloe-horton-2/)