



11 Bower Hill Close, South Nutfield

Redhill

In Excess of **£450,000**



11 Bower Hill Close

South Nutfield, Redhill

Presenting a charming 3-bedroom semi-detached bungalow nestled at the end of a tranquil cul-de-sac, this property offers immense potential for a discerning buyer. In need of some updating, this residence provides the ideal opportunity to create a bespoke living space tailored to individual tastes. Boasting a prime location within walking distance to Nutfield train station, commuting convenience is at your doorstep. Comprising three bedrooms, an extended reception room, a kitchen, and a bathroom, this property also features a rear garden, providing a serene outdoor retreat. Additional amenities include off-street parking and a garage, ensuring practicality and convenience for the residents.

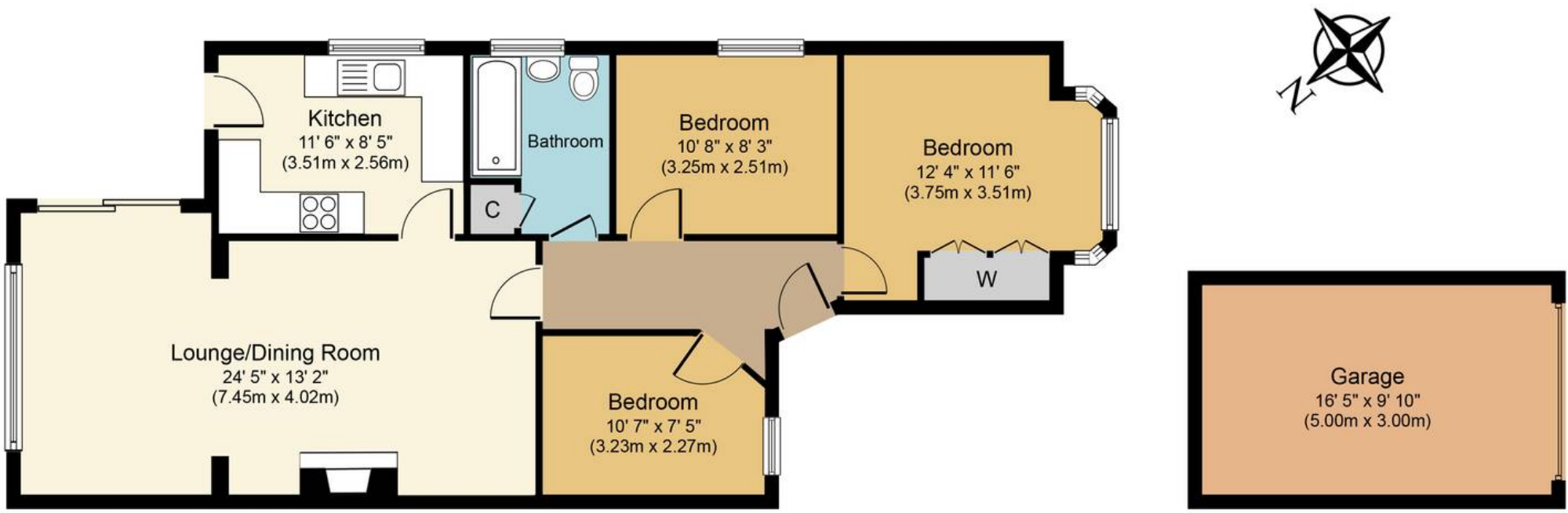
Outdoors, the property delights with a well-maintained rear garden, offering a private sanctuary for relaxation and al fresco dining. With ample space to unleash creativity for landscaping and gardening, the garden presents a canvas for green-fingered enthusiasts to cultivate their dream outdoor haven. The property's exterior enjoys a harmonious blend of tranquillity and the potential for outdoor entertainment, promising a lifestyle of comfort and relaxation amidst nature's beauty.

Council Tax band: E

Tenure: Freehold







Ground Floor
Approximate Floor Area
826 sq. ft.
(76.8 sq. m.)

Garage
Approximate Floor Area
161 sq. ft.
(15.0 sq. m.)

Bower Hill Close, RH1
Approx. Gross Internal Floor Area 988 sq. ft. (91.8 sq. m.)



Whilst every attempt has been made to ensure the accuracy of the floor plan contained here, measurements of doors, windows, rooms and any other items are approximate and no responsibility is taken for any error, omission, or mis-statement. The measurements should not be relied upon for valuation, transaction and/or funding purposes. This plan is for illustrative purposes only and should be used as such by any prospective purchaser or tenant. The services, systems and appliances shown have not been tested and no guarantee as to their operability or efficiency can be given.