



## 6 Artingstall Drive

Henbury

A luxurious 4-bed detached house in Weaver Green with top-quality finishes, less than 1 year old. Modern family living with high-spec features, media wall, extensive walled garden, garage & driveway. Tranquil village setting near Alderley Edge & Knutsford. Rare opportunity not to be missed!

Council Tax band: E

Tenure: Freehold

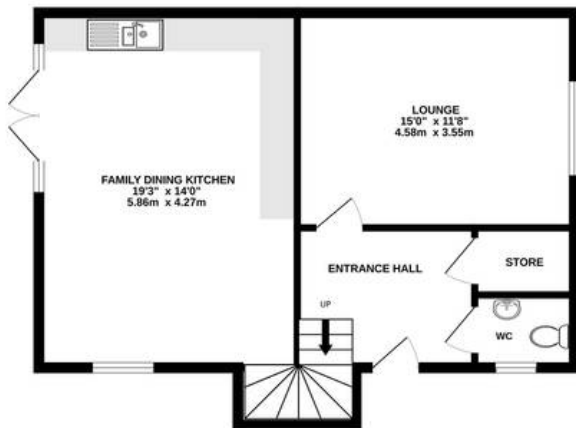
EPC Energy Efficiency Rating: B

EPC Environmental Impact Rating: B

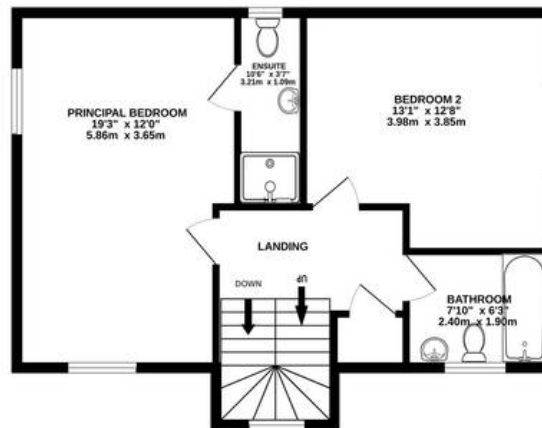
- A stunning detached recently built home, less than 1 year old
- Four good bedrooms serviced by three contemporary bathrooms and a downstairs WC
- A sought-after development, within a pretty village setting, just a short journey from Alderley Edge
- High-spec finish with beautiful additions, like a fabulous media wall
- Extensive walled garden, driveway and garage
- 'The Hawthorn' - one of very few examples on the development



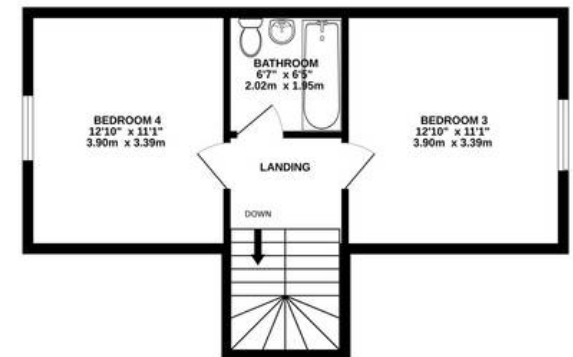
GROUND FLOOR  
578 sq.ft. (53.7 sq.m.) approx.



1ST FLOOR  
578 sq.ft. (53.7 sq.m.) approx.



2ND FLOOR  
408 sq.ft. (37.9 sq.m.) approx.



TOTAL FLOOR AREA : 1565 sq.ft. (145.4 sq.m.) approx.

Whilst every attempt has been made to ensure the accuracy of the floorplan contained here, measurements of doors, windows, rooms and any other items are approximate and no responsibility is taken for any error, omission or mis-statement. This plan is for illustrative purposes only and should be used as such by any prospective purchaser. The services, systems and appliances shown have not been tested and no guarantee as to their operability or efficiency can be given.

Made with Metropix ©2024



## Stuart Rushton & Company

Stuart Rushton & Co, 35 King Street – WA16 6DW

01565 757000

[enquiries@srushton.co.uk](mailto:enquiries@srushton.co.uk)

[www.srushton.co.uk](http://www.srushton.co.uk)



We are not authorised to make or give any representations or warranties in relation to the property either here or elsewhere. We assume no responsibility for any statement that may be made in these particulars, and they do not form part of any offer or contract and must not be relied upon as statements or representation of fact. Any areas, measurements or distances are approximate. The text, photographs and plans are for guidance only. Importantly, it should not be assumed that the property has all necessary planning, building regulations or other consents and we have not tested any services, equipment or facilities. Purchasers must satisfy themselves by inspection or otherwise.