

SOLD STC



15 Blenheim Road, Wakefield

2 Bedrooms, 1 Bathroom, Apartment

£150,000

MARTIN&CO



15 Blenheim Road, Wakefield

2 Bedrooms, 1 Bathroom

£150,000

- No Onward Chain
- First Floor
- Separate Kitchen Breakfast Room
- Two Bedrooms
- Character Features

Martin & Co - Wakefield are pleased to bring to the market this well presented and recently redecorated first floor apartment, with two bedrooms and large open plan living space separate kitchen with breakfast bar

Having a secure intercom entry system, leading up one flight of stairs giving access to the apartment.

HALLWAY Giving access to all rooms, central heating radiator, vinyl flooring and decorated throughout.

LIVING ROOM 21' 5" x 14' 0" (6.55m x 4.27m) A magnificent room ideal for entertaining with feature fireplace, sash window to the side, period style central heating radiators, picture rail.

KITCHEN/BREAKFAST ROOM 8' 5" x 13' 7" (2.57m x 4.16m) Range of attractive base and wall mounted units with coordinated work surfaces, sink unit with single drainer, half sink and mixer tap, fitted stainless steel electric oven with four ring hob and fan canopy above with bay window to the front and period style central heating radiator.

MASTER BEDROOM 13' 8" x 9' 2" (4.18m x 2.8m) With two period style sash windows and central heating radiators

BEDROOM 9' 7" x 7' 2" (2.94m x 2.2m) Central heating radiator, sash window to the rear, built-in storage cupboard.

BATHROOM Fitted with a three piece suite in white with chrome fittings comprising; of fitted bath pedestal wash basin, high flush WC, vinyl to the floor and part tiled walls, radiator and frosted bay window

EXTERNAL The property has access to communal gardens located at the rear.





LEASHOLD DETAILS 171 years remaining on the lease
Service Charge - £1200 PA
Ground Rent - £100 PA



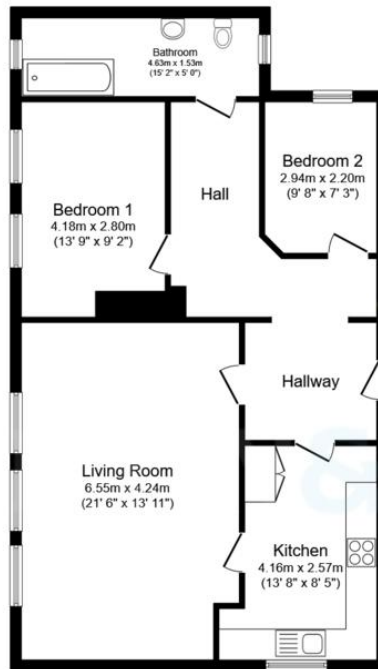


%epcGraph_c_1_210%



MARTIN & CO





Floor Plan

Floor area 82.4 m² (887 sq.ft.)

TOTAL: 82.4 m² (887 sq.ft.)

This floor plan is for illustrative purposes only. It is not drawn to scale. Any measurements, floor areas (including any total floor area), openings and orientations are approximate. No details are guaranteed, they cannot be relied upon for any purpose and do not form any part of any agreement. No liability is taken for any error, omission or misstatement. A party must rely upon its own inspection(s). Powered by www.Propertybox.io

Martin & Co Wakefield

52 Northgate • Wakefield • WF1 3AN
T: 01924 201457 • E: wakefield@martinco.com

01924 201457

<http://www.martinco.com>



Accuracy: References to the Tenure of a Property are based on information supplied by the Seller. The Agent has not had sight of the title documents. A Buyer is advised to obtain verification from their Solicitor. Items shown in photographs including but not limited to carpets, fixtures and fittings are not included unless specifically mentioned within the sales particulars. They may however be available by separate negotiation. Buyers must check the availability of any property and make an appointment to view before embarking on any journey to see a property. No person in the employment of the agent has any authority to make any representation about the property, and accordingly any information given is entirely without responsibility on the part of the agents, sellers(s) or lessors(s). Any property particulars are not an offer or contract, nor for part of one. **Sonic / laser Tape:** Measurements taken using a sonic / laser tape measure may be subject to a small margin of error. **All Measurements:** All Measurements are Approximate. **Services Not tested:** The Agent has not tested any apparatus, equipment, fixtures and fittings or services and so cannot verify that they are in working order or fit for the purpose. A Buyer is advised to obtain verification from their Solicitor or Surveyor.