



WIREWORKS

BLOCK ONE



WELCOME

WIREWOKS APARTMENTS, IN THE HEART OF MUSSELBURGH ARE PERFECTLY PLACED BETWEEN EDINBURGH'S CITY CENTRE AND THE BEACHES OF EAST LOTHIAN

Situated in the ever popular county of East Lothian, Wireworks is one of Musselburgh's most recent and contemporary developments. Dundas is delighted to provide a range of one, two and three bedroom apartments and penthouses that are tailored to meet the needs of a range of potential buyers. The development's proximity to both Edinburgh's city centre and the beautiful beaches for which East Lothian is renowned, makes Wireworks a perfect home for anyone - from first time buyers to those wishing to downsize.



CGIs are for illustrative purposes only

CGIs are for illustrative purposes only



Floor plans are for illustrative purposes only.

TYPE 3B PLOT 2
3-bedroom apartment
 TOTAL FLOOR AREA: 111 SQM, 1195 SQFT

ROOM	METERS	FEET
Kitchen/Living/Dining	8.22 x 6.08	26'0" x 19'11"
Bedroom 1	3.23 x 3.60	10'7" x 11'10"
En-Suite	1.84 x 2.49	6'0" x 8'2"
Bedroom 2	2.94 x 2.89	9'8" x 9'6"
Bedroom 3	3.66 x 2.74	12'0" x 8'0"
Bathroom	2.91 x 2.28	9'7" x 7'6"

TYPE 3A PLOT 1
3-bedroom apartment
 TOTAL FLOOR AREA: 105 SQM, 1130 SQFT

ROOM	METERS	FEET
Kitchen/Living/Dining	9.11 x 5.05	29'11" x 16'7"
Bedroom 1	2.64 x 5.17	8'8" x 16'0"
En-Suite	2.33 x 1.69	7'8" x 5'7"
Bedroom 2	2.7 x 3.67	8'10" x 12'0"
Bedroom 3	2.58 x 2.47	8'6" x 8'1"
Bathroom	2.62 x 2.12	8'7" x 6'11"



TYPE 2F
PLOT 3

TYPE 2I
PLOT 6

TYPE 2G
PLOT 4

TYPE 2H
PLOT 5

Floor plans are for illustrative purposes only.

TYPE 2I
PLOT 6
2-bedroom apartment
TOTAL FLOOR AREA: 79 SQM, 850 SQFT

ROOM	METERS	FEET
Kitchen/Living/Dining	4.10 x 6.57	13'5" x 21'7"
Bedroom 1	3.32 x 3.13	10'11" x 10'3"
En-Suite	1.88 x 2.66	6'2" x 8'9"
Bedroom 2	2.69 x 3.13	8'10" x 10'3"
Bathroom	2.61 x 2.01	8'7" x 6'7"
Balcony	1.31 x 3.24	4'4" x 10'8"

TYPE 2F
PLOT 3
2-bedroom apartment
TOTAL FLOOR AREA: 72 SQM, 775 SQFT

ROOM	METERS	FEET
Living/Dining	3.29 x 4.98	10'10" x 16'4"
Kitchen	2.51 x 3.19	8'3" x 10'6"
Bedroom 1	2.83 x 3.85	9'3" x 12'8"
En-Suite	1.55 x 2.40	5'1" x 7'10"
Bedroom 2	3.00 x 3.25	9'10" x 10'8"
Bathroom	2.40 x 2.72	7'10" x 8'11"

TYPE 2H
PLOT 5
2-bedroom apartment
TOTAL FLOOR AREA: 79 SQM, 850 SQFT

ROOM	METERS	FEET
Kitchen/Living/Dining	4.13 x 6.57	13'7" x 21'7"
Bedroom 1	3.33 x 3.13	10'11" x 10'3"
En-Suite	1.88 x 2.62	6'2" x 8'7"
Bedroom 2	2.69 x 3.13	8'10" x 10'3"
Bathroom	2.60 x 2.01	8'6" x 6'7"
Balcony	1.31 x 3.24	4'4" x 10'8"

TYPE 2G
PLOT 4
2-bedroom apartment
TOTAL FLOOR AREA: 64 SQM, 689 SQFT

ROOM	METERS	FEET
Kitchen/Living/Dining	3.95 x 5.82	12'0" x 19'1"
Bedroom 1	3.14 x 3.38	10'4" x 11'1"
Bedroom 2	2.71 x 2.90	8'11" x 9'6"
Bathroom	2.00 x 2.33	6'7" x 7'8"



Floor plans are for illustrative purposes only.

TYPE 2I
PLOT 10

2-bedroom apartment

TOTAL FLOOR AREA: 79 SQM, 850 SQFT

ROOM	METERS	FEET
Kitchen/Living/Dining	4.10 x 6.57	13'5" x 21'7"
Bedroom 1	3.32 x 3.13	10'11" x 10'3"
En-Suite	1.88 x 2.66	6'2" x 8'9"
Bedroom 2	2.69 x 3.13	8'10" x 10'3"
Bathroom	2.61 x 2.01	8'7" x 6'7"
Balcony	1.31 x 3.24	4'4" x 10'8"

TYPE 2H
PLOT 9

2-bedroom apartment

TOTAL FLOOR AREA: 79 SQM, 850 SQFT

ROOM	METERS	FEET
Kitchen/Living/Dining	4.13 x 6.57	13'7" x 21'7"
Bedroom 1	3.33 x 3.13	10'11" x 10'3"
En-Suite	1.88 x 2.62	6'2" x 8'7"
Bedroom 2	2.69 x 3.13	8'10" x 10'3"
Bathroom	2.60 x 2.01	8'6" x 6'7"
Balcony	1.31 x 3.24	4'4" x 10'8"

TYPE 2F
PLOT 7

2-bedroom apartment

TOTAL FLOOR AREA: 72 SQM, 775 SQFT

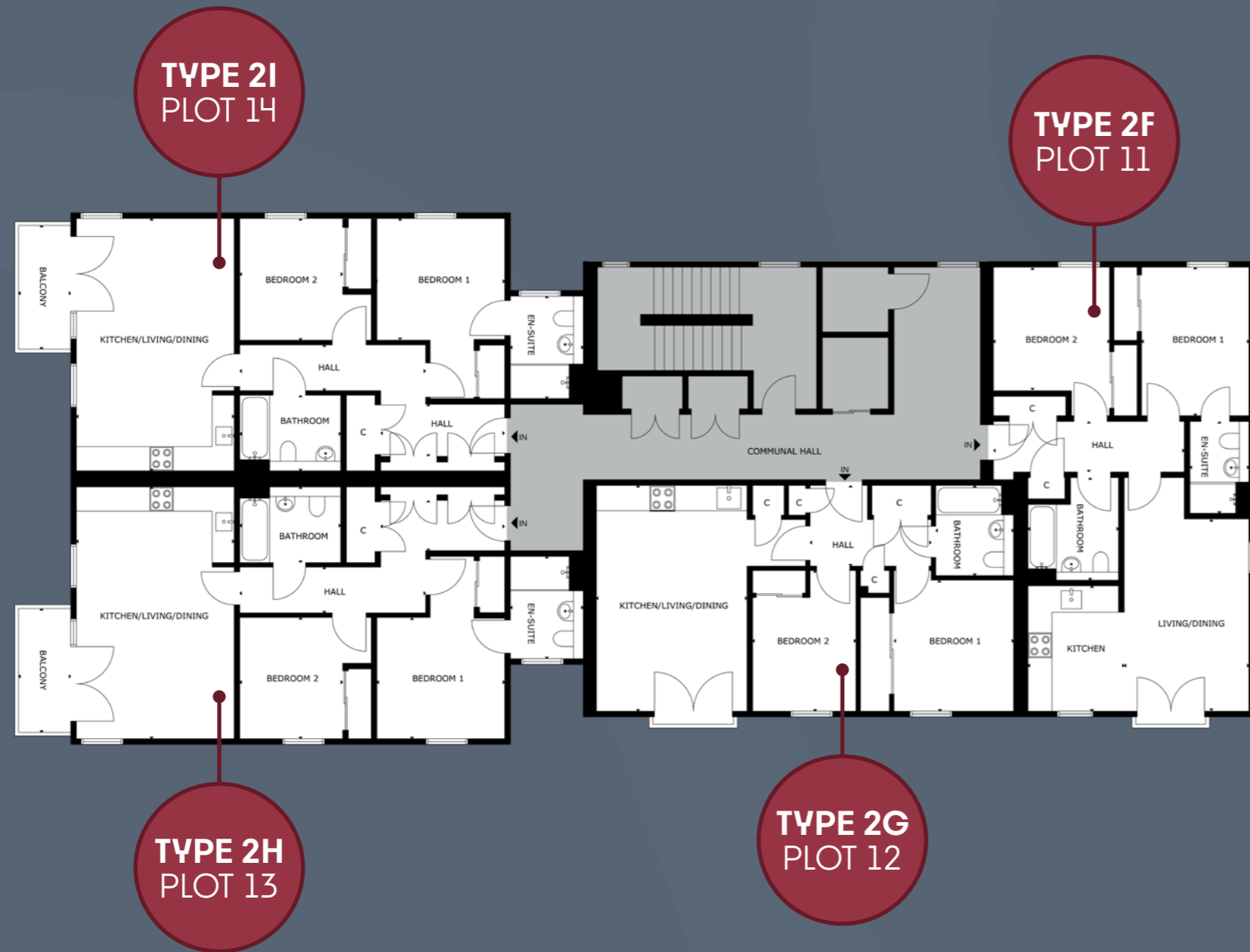
ROOM	METERS	FEET
Living/Dining	3.29 x 4.98	10'10" x 16'4"
Kitchen	2.51 x 3.19	8'3" x 10'6"
Bedroom 1	2.83 x 3.85	9'3" x 12'8"
En-Suite	1.55 x 2.40	5'1" x 7'10"
Bedroom 2	3.00 x 3.25	9'10" x 10'8"
Bathroom	2.40 x 2.72	7'10" x 8'11"

TYPE 2G
PLOT 8

2-bedroom apartment

TOTAL FLOOR AREA: 64 SQM, 689 SQFT

ROOM	METERS	FEET
Kitchen/Living/Dining	3.95 x 5.82	12'0" x 19'1"
Bedroom 1	3.14 x 3.38	10'4" x 11'1"
Bedroom 2	2.71 x 2.90	8'11" x 9'6"
Bathroom	2.00 x 2.33	6'7" x 7'8"



Floor plans are for illustrative purposes only.

TYPE 2I
PLOT 14

2-bedroom apartment

TOTAL FLOOR AREA: 79 SQM, 850 SQFT

ROOM	METERS	FEET
Kitchen/Living/Dining	4.10 x 6.57	13'5" x 21'7"
Bedroom 1	3.32 x 3.13	10'11" x 10'3"
En-Suite	1.88 x 2.66	6'2" x 8'9"
Bedroom 2	2.69 x 3.13	8'10" x 10'3"
Bathroom	2.61 x 2.01	8'7" x 6'7"
Balcony	1.31 x 3.24	4'4" x 10'8"

TYPE 2H
PLOT 13

2-bedroom apartment

TOTAL FLOOR AREA: 79 SQM, 850 SQFT

ROOM	METERS	FEET
Kitchen/Living/Dining	4.13 x 6.57	13'7" x 21'7"
Bedroom 1	3.33 x 3.13	10'11" x 10'3"
En-Suite	1.88 x 2.62	6'2" x 8'7"
Bedroom 2	2.69 x 3.13	8'10" x 10'3"
Bathroom	2.60 x 2.01	8'6" x 6'7"
Balcony	1.31 x 3.24	4'4" x 10'8"

TYPE 2F
PLOT 11

2-bedroom apartment

TOTAL FLOOR AREA: 72 SQM, 775 SQFT

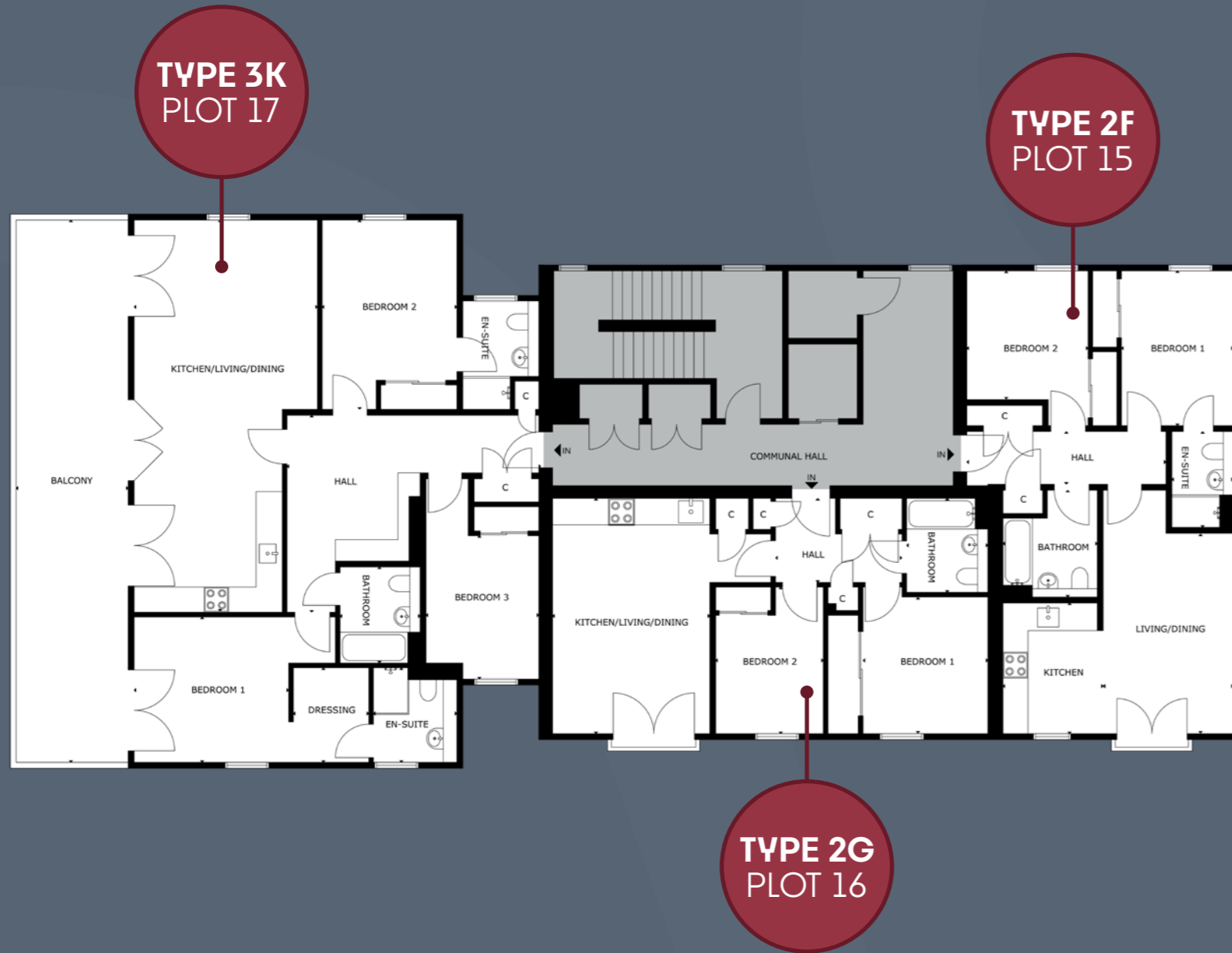
ROOM	METERS	FEET
Living/Dining	3.29 x 4.98	10'10" x 16'4"
Kitchen	2.51 x 3.19	8'3" x 10'6"
Bedroom 1	2.83 x 3.85	9'3" x 12'8"
En-Suite	1.55 x 2.40	5'1" x 7'10"
Bedroom 2	3.00 x 3.25	9'10" x 10'8"
Bathroom	2.40 x 2.72	7'10" x 8'11"

TYPE 2G
PLOT 12

2-bedroom apartment

TOTAL FLOOR AREA: 64 SQM, 689 SQFT

ROOM	METERS	FEET
Kitchen/Living/Dining	3.95 x 5.82	12'0" x 19'1"
Bedroom 1	3.14 x 3.38	10'4" x 11'1"
Bedroom 2	2.71 x 2.90	8'11" x 9'6"
Bathroom	2.00 x 2.33	6'7" x 7'8"



Floor plans are for illustrative purposes only.

TYPE 3K PLOT 17
3-bedroom penthouse
 TOTAL FLOOR AREA: 128 SQM, 1378 SQFT

ROOM	METERS	FEET
Kitchen/Living/Dining	4.67 x 9.77	15'4" x 32'1"
Bedroom 1	3.96 x 3.64	12'0" x 11'11"
Dressing	1.87 x 2.38	6'2" x 7'10"
En-Suite	1.89 x 2.67	6'2" x 8'9"
Bedroom 2	3.39 x 4.76	11'1" x 15'7"
En-Suite	1.91 x 2.69	6'3" x 8'10"
Bedroom 3	2.83 x 3.56	9'3" x 11'8"
Bathroom	2.01 x 2.43	6'7" x 7'0"
Balcony	2.57 x 13.58	8'5" x 44'7"

TYPE 2F PLOT 15
2-bedroom apartment
 TOTAL FLOOR AREA: 72 SQM, 775 SQFT

ROOM	METERS	FEET
Living/Dining	3.29 x 4.98	10'10" x 16'4"
Kitchen	2.51 x 3.19	8'3" x 10'6"
Bedroom 1	2.83 x 3.85	9'3" x 12'8"
En-Suite	1.55 x 2.40	5'1" x 7'10"
Bedroom 2	3.00 x 3.25	9'10" x 10'8"
Bathroom	2.40 x 2.72	7'10" x 8'11"

TYPE 2G PLOT 16
2-bedroom apartment
 TOTAL FLOOR AREA: 64 SQM, 689 SQFT

ROOM	METERS	FEET
Kitchen/Living/Dining	3.95 x 5.82	12'0" x 19'1"
Bedroom 1	3.14 x 3.38	10'4" x 11'1"
Bedroom 2	2.71 x 2.90	8'11" x 19'6"
Bathroom	2.00 x 2.33	6'7" x 7'8"





WIREWORKS

WWW.DUNDAS.CO.UK
SALES@DUNDAS.CO.UK

0345 853 5006