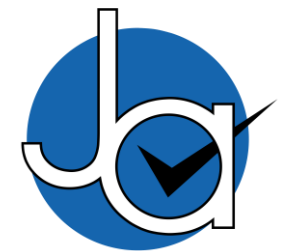




**5 bedroom
Semi-Detached
House located
in Colchester.**

Guide Price
£350,000 - £375,000

Find us on..



JOHN ALEXANDER
ESTATE AGENTS

Silverthorne Close Colchester CO2 8QB

FULL DESCRIPTION

*** GUIDE PRICE OF £350,000 - £375,000 ***

This spacious four/five bedroom semi detached property is available for sale and is in excellent condition, the property offers excellent space for the growing family and is positioned down a quiet cul-de-sac, Located off of Mersea Road, the property offers easy access to nearby schools, shops, and amenities.

This Family homes offers plenty of space, the internal the well proportioned accommodation includes an entrance hallway, ground floor cloakroom, utility room study/bedroom five, lounge, and kitchen on the ground floor, with four double bedrooms and a family bathroom on the first floor.

The property also benefits from off-road parking to the front and a well maintained private garden to the rear. John Alexander, as the chosen sole agents, strongly recommend an early internal viewing to avoid disappointment.

THE LOCATION

The Willows in Colchester, Essex is a picturesque residential area known for its tree-lined streets and well-maintained properties. Nestled in a quiet and peaceful neighbourhood, The Willows offers a tranquil setting for residents to enjoy.

With easy access to nearby parks, schools, and amenities, The Willows is the ideal location for families and individuals looking for a charming place to call home.

The area boasts a strong sense of community, with friendly neighbours and a safe environment. Whether you're taking a leisurely stroll through the neighbourhood or relaxing in your own backyard, The Willows provides a beautiful backdrop for everyday living.



5



2



0



C



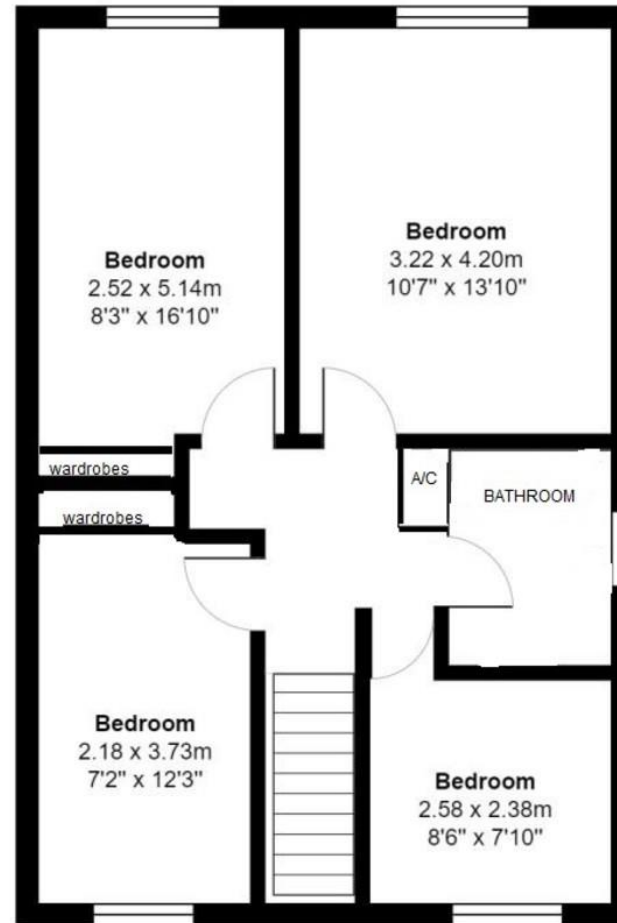
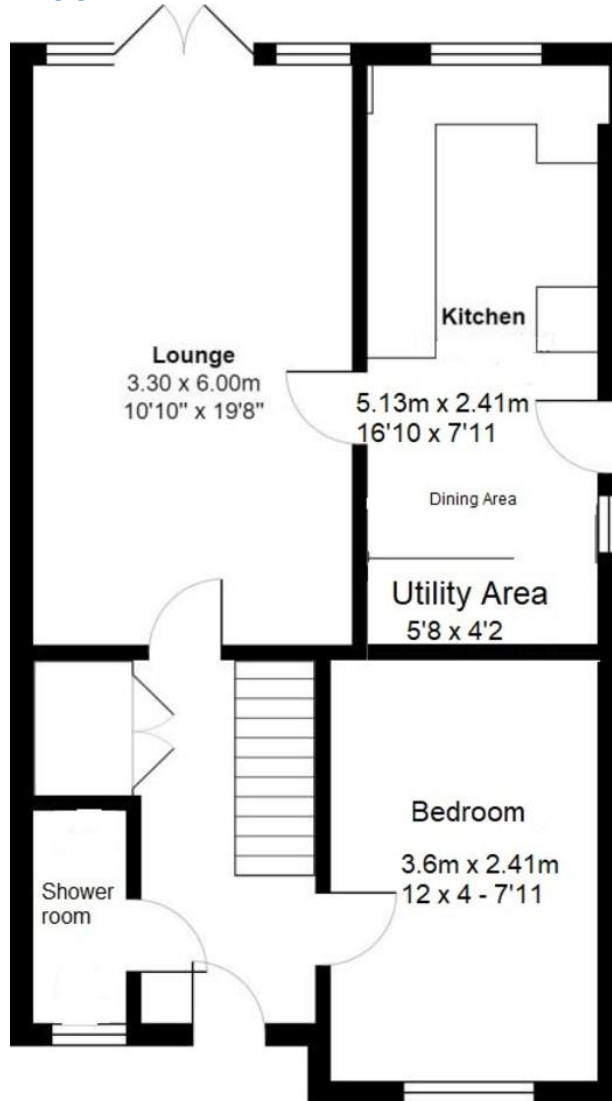
EPC

D





FLOORPLAN



CONTACT

99 London Road
Stanway
Colchester
Essex
CO3 0NY

E sales@john-alexander.co.uk

T 01206 656007

www.john-alexander.co.uk

Find us on..



JOHN ALEXANDER
ESTATE AGENTS