



 RDR DASSAUR

The Chase Hatton Green, Hatton
Warwick

 RDR DASSAUR

£450,000



The Chase Hatton Green

Hatton, Warwick

Charming 3-bed link-detached home on 1/3 acre. Scope for loft conversion. Driveway, garage, & large rear garden. Local amenities & excellent transport links nearby. Perfect family home with potential for future development.

Council Tax band: F

Tenure: Freehold

- ****NO CHAIN****
- Desirable Village Location
- 3 Bedroom Link Detached
- Generously Large Garden
- Large Driveway
- Garage





RDR DASSAUR



RDR DASSAUR

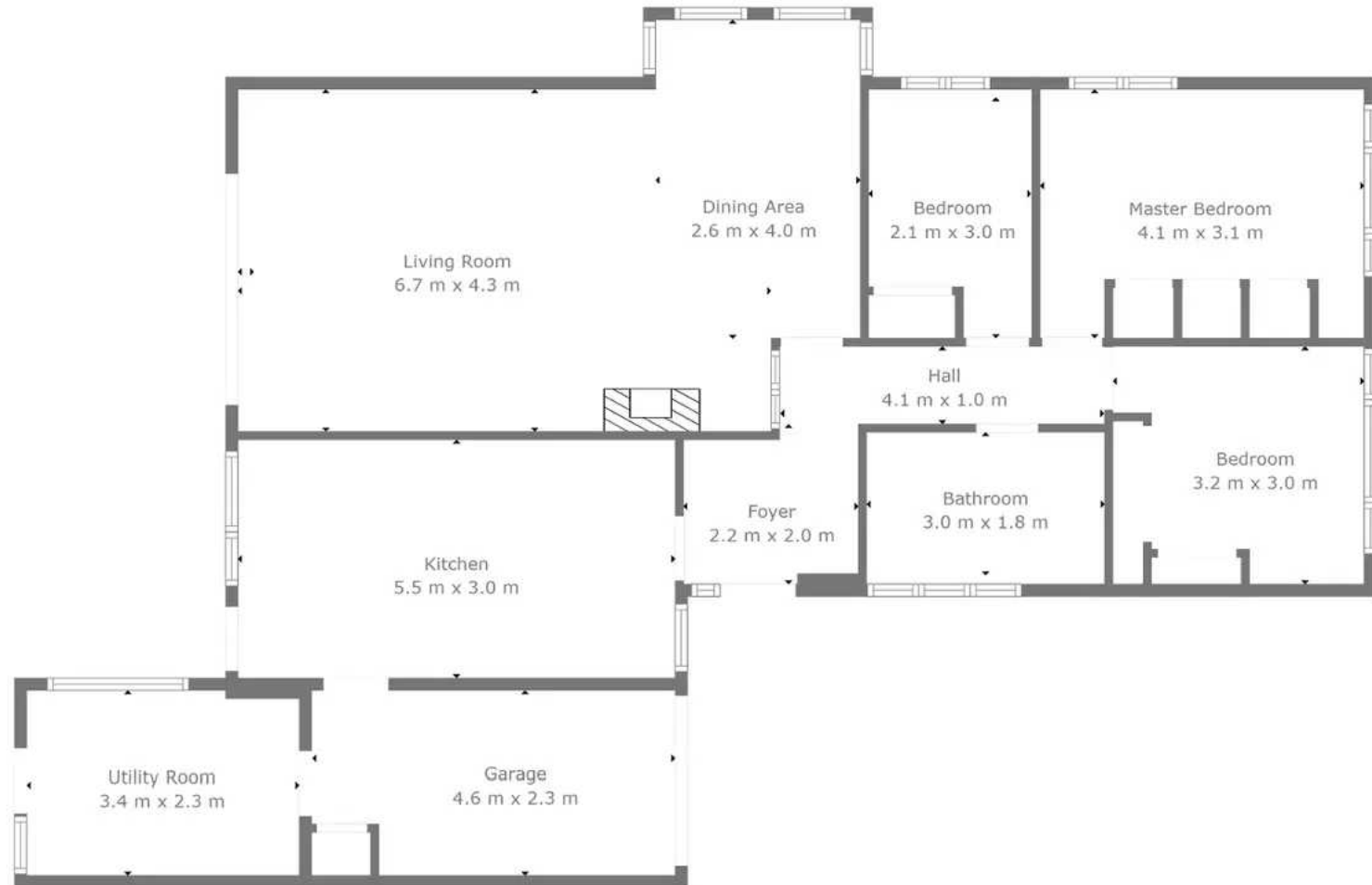


RDR DASSAUR



RDR DASSAUR

Breakfast Nook
0.2 m x 4.3 m



TOTAL: 106 m2
FLOOR 1: 106 m2
EXCLUDED AREAS: GARAGE: 11 m2



RDR Dassaur estate agents

Unit 2 Nelson Dale Wharf Street, Warwick - CV34 5LB

01926268989

Admin@RDRDassaur.co.uk

rdrdassaur.co.uk/

