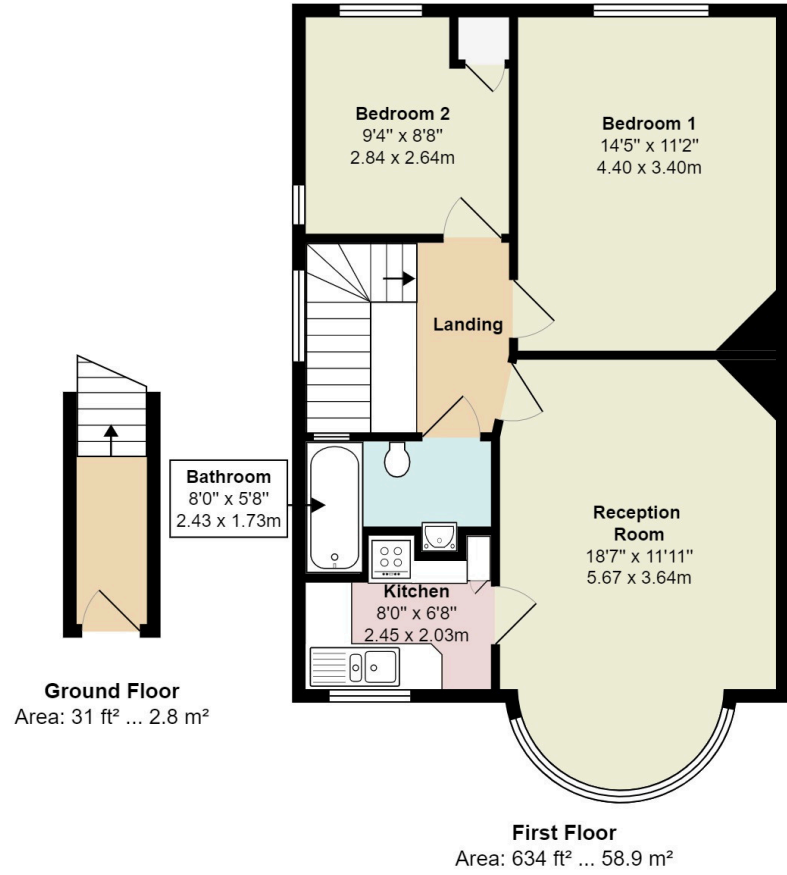




Gainsborough Gardens NW11
Total Area: 664 ft² ... 61.7 m²



All measurements are approximate and for display purposes only



Tenure Leasehold



634 Sq Ft / 61.7 sqm



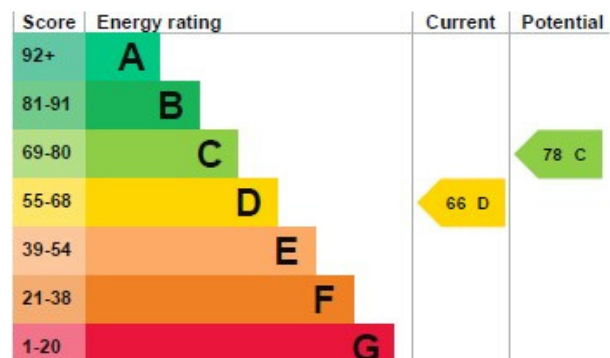
2 Bedrooms



1 Bathrooms



Permit Parking



Gainsborough Gardens, Golders Green, NW11 9BJ Offers Over: £400,000

Nestled on Gainsborough Gardens is this two bedroom, first floor apartment offered to the market chain free. The property comprises of two bedrooms, a large south facing reception room awash with natural light, separate kitchen and three piece bathroom. The apartment benefits from plenty of storage space, over 90 years remaining on lease, and a quiet location.

Gainsborough Gardens is a quiet cul-de-sac in Golders Green being just up the road from the high street with an excellent array of boutique shops and restaurants, as well as excellent shopping options including a Tesco and Sainsburys on your doorstep. Public green spaces are close by, with Golders Green Underground Station also only being down the road from the property. This ideally located apartment is ready to make a home for its next occupier, or the perfect investment opportunity.

GROUND RENT: £50 PER ANNUM
SERVICE CHARGE: N/A
LEASE LENGTH: 01/01/2117

903-905 Finchley Road Golders Green London NW11 7PE
Telephone 020 8381 4970 Email info@moreland.uk.com

Registered Office Unit 8, Alpha Business Park, Travellers Close, Welham Green AL9 7NT Registered in England No. 3663497 Vat No. 701775936
Residential Sales Lettings Full Management Financial Services New Homes



