



VICTORIAN 3 BED SEMI-DETACHED HOUSE WITH SW FACING GARDEN.

GUIDE PRICE £485,000

62 Priory Road, Reigate, Surrey, RH2 8JB

Welcome to this charming 3-bedroom Victorian semi-detached house, perfectly blending classic elegance with modern convenience. This delightful home features gas central heating and double glazing, ensuring comfort and energy efficiency year-round. Inside, you'll find two spacious reception rooms, each full of character and ideal for both relaxation and entertaining. The fitted kitchen serves as the heart of the home, complemented by a practical utility area. The ground floor bathroom is stylishly appointed, adding to the home's overall appeal.

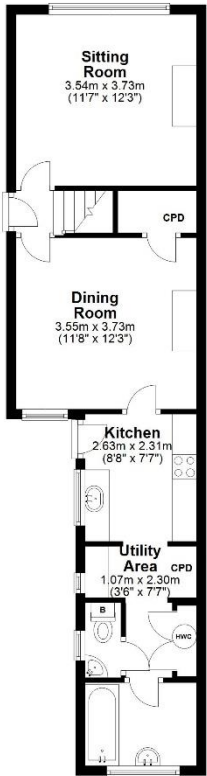
Step outside to discover a delightful southwest-facing garden, perfect for outdoor gatherings, gardening, or simply relaxing in the sun. Located in a prime area, this home is well-placed for excellent schools and a variety of recreational facilities, making it ideal for families. Combining historical charm with modern amenities, this Victorian gem is a must-see.



lewis
white



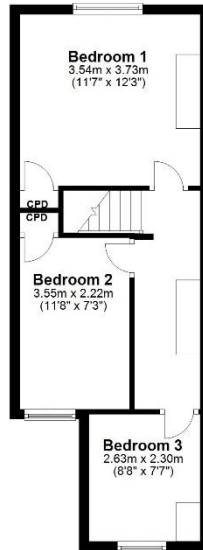
Ground Floor
Approx. 47.4 sq. metres (510.4 sq. feet)



Total area: approx. 83.8 sq. metres (902.3 sq. feet)

Produced by Lewis White, not to scale and indicative only
Plan produced using PlanUp.

First Floor
Approx. 36.4 sq. metres (391.9 sq. feet)



Council tax band: D EPC: D.

Lewis White Estate Agents, Somers House, Linkfield Corner, RH1 1BB. 01737 245779 info@lewiswhite.net www.lewiswhite.net