

Greenfield Terrace Copthurst Lane, Whittle-le-Woods

PR6 8LP


£425,000



Spacious, stone fronted, individual property retaining many period features, one of only four in the row, dating back to the 1800s enjoying over 1,000 square feet of accommodation over three floors, views over fields and trees to the front and overlooking the Leeds & Liverpool canal and open countryside, to the rear. Available with no upward chain. Step into the living room with wooden flooring and feature gas fire in Regency hearth. Leading off is the dining room with flagged flooring and Victorian range dating back to 1878 which is still in good working order. To the rear the kitchen comprises a number of hand made bespoke units, Belfast sink and space, power and plumbing for appliances including the Baxi combi boiler. A stable door leads outside. Intersecting the two reception rooms the wooden staircase leads to the mezzanine floor and from there to the first floor. Bedroom one is to the front with built in storage, views and en suite comprising rainfall mixer shower, wash hand basin and wc with high cistern. Bedroom two is to the rear and enjoys equally lovely views with the adjacent bathroom comprising bath with mixer shower over, wc with high cistern, wash hand basin and heated towel rail. To the second floor bedroom three has the chimney wishbone, galley cover and discrete drying room, with natural light provided by Velux windows. Externally the property has upper and lower decked areas to take full advantage of the gentle activity on the canal, with the upper decking having storage, sink and water supply.



2 Greenfield Terrace Copthurst Lane

Whittle-le-Woods, Chorley

Spacious, stone fronted, individual property retaining many period features, dating back to the 1800s with over 1,000 square feet of accommodation, views over fields and trees to the front and overlooking the Leeds & Liverpool canal and open countryside, to the rear. Available with no upward chain.

Council Tax band: C

Tenure: Freehold

- Spacious period property
- Three double bedrooms
- Rural setting
- Beautiful views to the front and rear
- Virtual tour
- Available with no upward chain



HOME  TRUTHS

Eccleston Branch

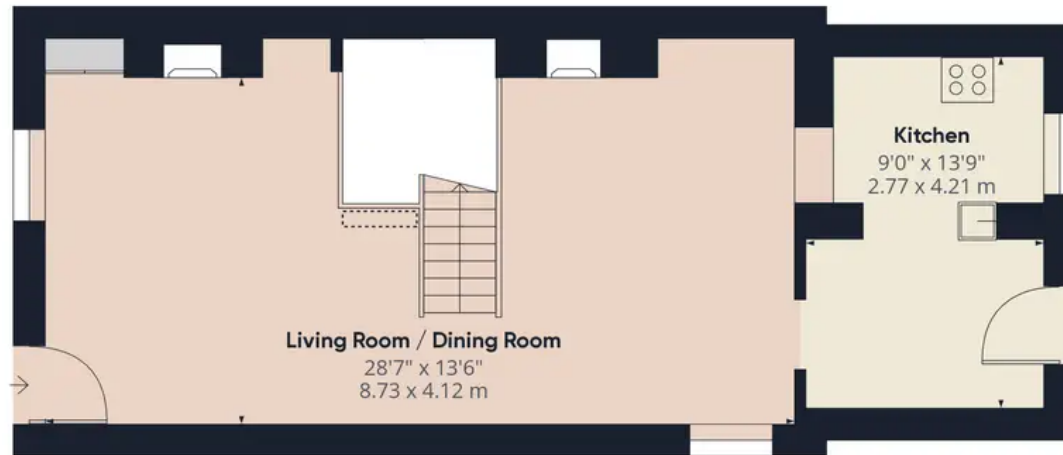
265 The Green, Eccleston, PR7 5TF
01257 451673

Coppull Branch

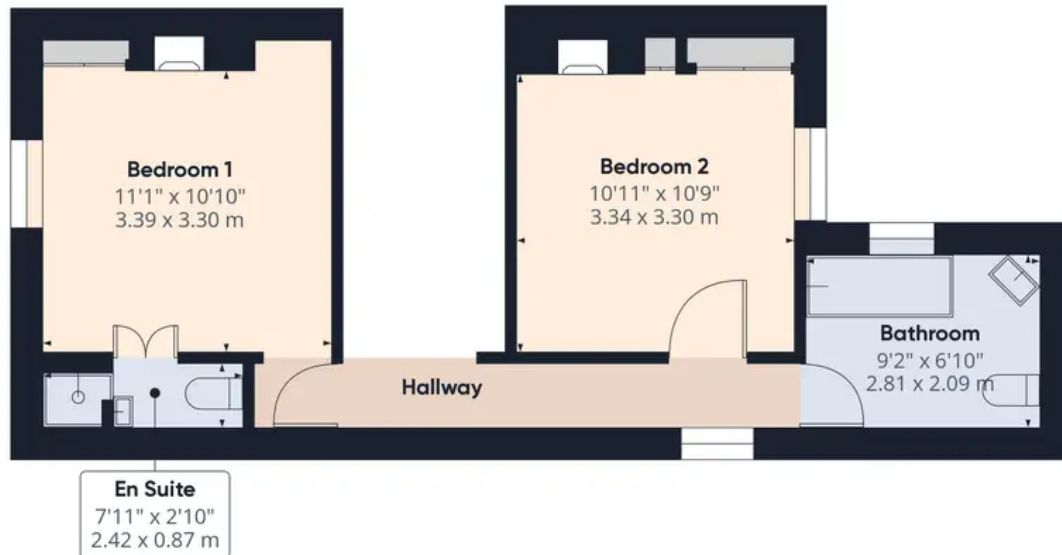
244 Spendmore Lane, Coppull, PR7 5DE
01257 794588

www.hometruthslancs.co.uk
office@hometruthslancs.co.uk





Floor 1



Floor 2



Floor 3

Approximate total area⁽¹⁾

1079.89 ft²

100.33 m²

Reduced headroom

108.9 ft²

10.12 m²

(1) Excluding balconies and terraces

 Reduced headroom
(below 1.5m/4.92ft)

While every attempt has been made to ensure accuracy, all measurements are approximate, not to scale. This floor plan is for illustrative purposes only.

GIRAFFE360