


HOME  TRUTHS

Bradley Lane, Ecclestone

PR7 5TQ

 £975 PCM



Dating back to 1869 this property has so much to offer both inside and out. Stroll past the cottage garden to the front, and step into the vestibule which opens to the front reception rooms with the lounge benefiting from Tiger eco multifuel stove in imposing stone hearth.

Camaro Cambridge flooring flows through to the heart of the house in the form of the kitchen area comprising a range of wall and base units topped by quartz work surfaces with etched drainer, integrated appliances including range cooker, dishwasher, refrigerator and freezer and central island with breakfast bar.

Leading off is the cleverly designed cloakroom with wash hand basin, wc and Worcester combi boiler and with space, power and plumbing for additional appliances.

Bifold doors open to the west facing garden with L shaped sun terrace and lawn bordered by garden walls, crushed slate and beautifully planted raised beds and pergola with decked area making this a delightful space in which to relax and entertain.

Back inside, the bespoke oak staircase rises to the first floor landing with storage and dressing or office area. There are two double bedrooms, the smaller of which has fitted wardrobes and the elegant bathroom comprises wash hand basin on period vanity, wc and rainfall shower in walk in cubicle.



The property requires a deposit of £1125, including holding deposit of £225.

Council Tax Band: B

EPC Rating: C

- Beautiful period property
- Stunning family room
- Two double bedrooms
- Multifuel stove
- Video tour
- Available now

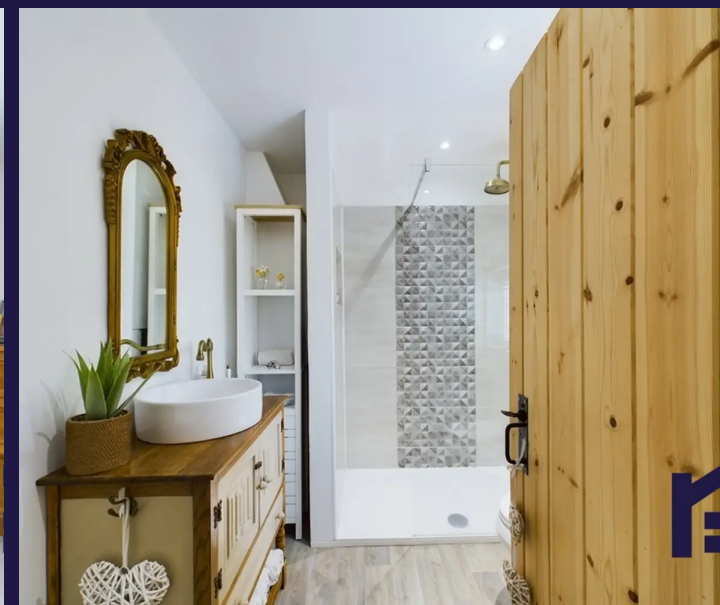


HOME  TRUTHS

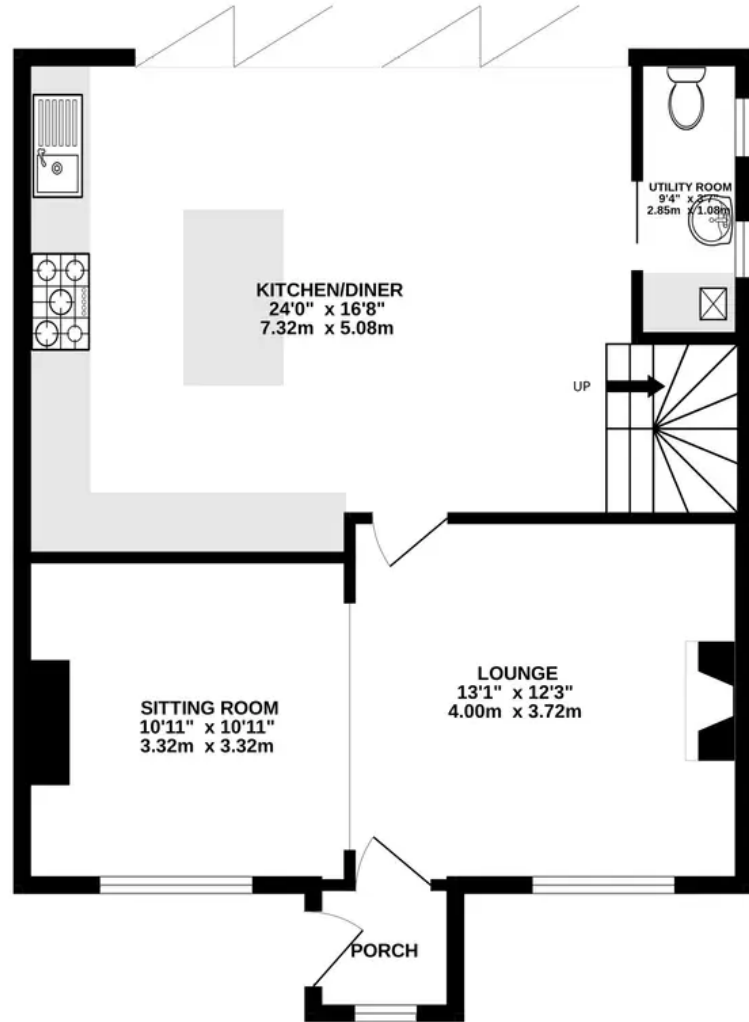
Eccleston Branch
265 The Green, Eccleston, PR7 5TF
01257 451673

Coppull Branch
244 Spendmore Lane, Coppull, PR7 5DE
01257 794588

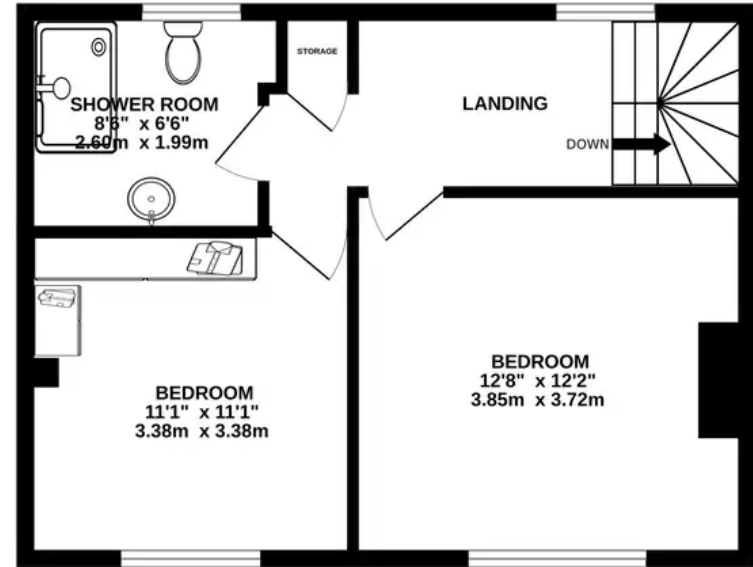
www.hometruthslancs.co.uk
office@hometruthslancs.co.uk



GROUND FLOOR
670 sq.ft. (62.3 sq.m.) approx.



1ST FLOOR
432 sq.ft. (40.1 sq.m.) approx.



TOTAL FLOOR AREA : 1102 sq.ft. (102.4 sq.m.) approx.

Whilst every attempt has been made to ensure the accuracy of the floorplan contained here, measurements of doors, windows, rooms and any other items are approximate and no responsibility is taken for any error, omission or mis-statement. This plan is for illustrative purposes only and should be used as such by any prospective purchaser. The services, systems and appliances shown have not been tested and no guarantee as to their operability or efficiency can be given.
Made with Metropix ©2023

