

# RESIDENTIAL PLOTS

MUIREND, COMRIE, PERTHSHIRE, PH6 2JA





IrvingGeddes  
W.S. • Solicitors • Estate Agents

## RESIDENTIAL PLOTS, MUIREND, COMRIE, PH6 2JA

Irving Geddes are delighted to offer for sale two adjoining residential plots located on southern periphery of the sought after Perthshire conservation village of Comrie. Each plot extends to c.0.4acre and are offered for sale individually. Full planning permission has been granted for a 1.5 storey 4 bedroom detached villa with attached garage, the proposed design by the Denholm Partnership a local firm of architects. The plots enjoy an enviable location, only a short walk into the village but boast a rural feel with an open southerly aspect over countryside.

Services are adjacent and full details of planning documentation can be viewed here:

<https://planningapps.pkc.gov.uk/online-applications/applicationDetails.do?activeTab=documents&keyVal=RJZM41MKJLZ00>

**Services** Mains water, gas and electricity, private drainage.

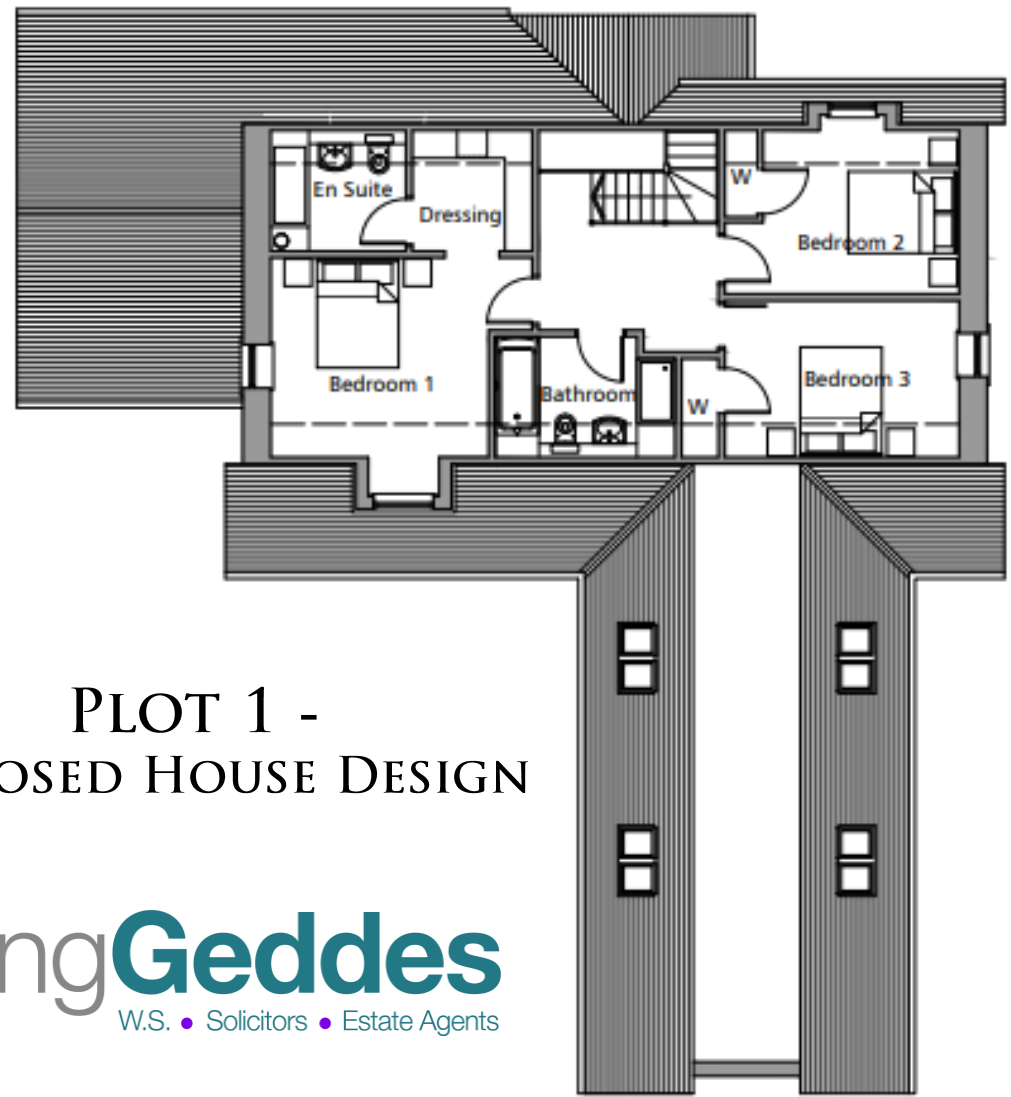
**Comrie** is a beautiful, lively village nestling on the banks of the River Earn, some 7mls west of Crieff & only 25mls from the Cities of Perth & Stirling. There are a number of independent shops, hotels, restaurants, and a medical centre and dentist. There is Primary schooling within the village and both private and public education available within Crieff. A haven for outdoor enthusiasts, there are river, woodland, hill and mountain walks surrounding the village, renowned mountain biking at 'Comrie Croft' and water sports and fishing at Loch Earn (6mls).







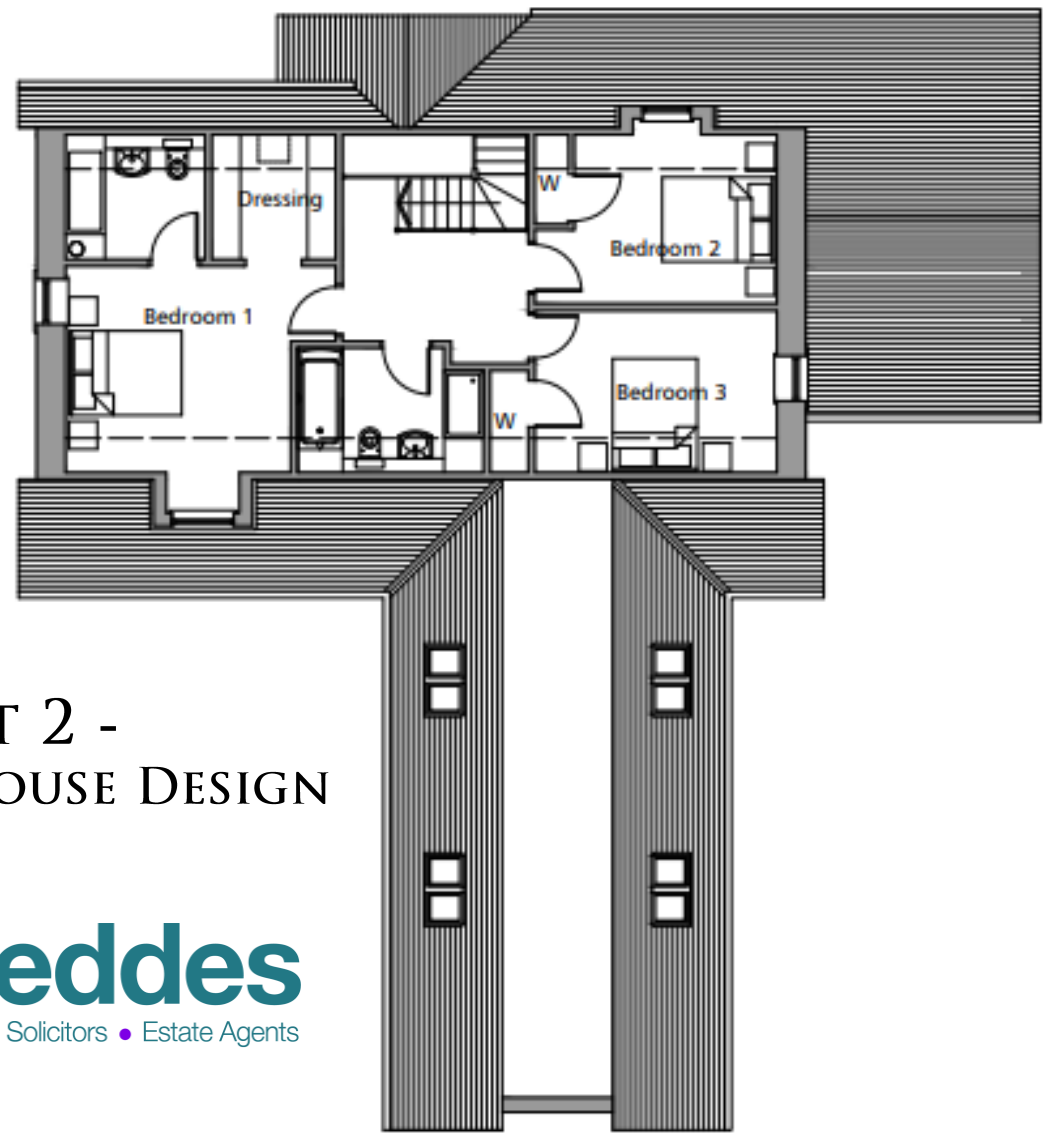
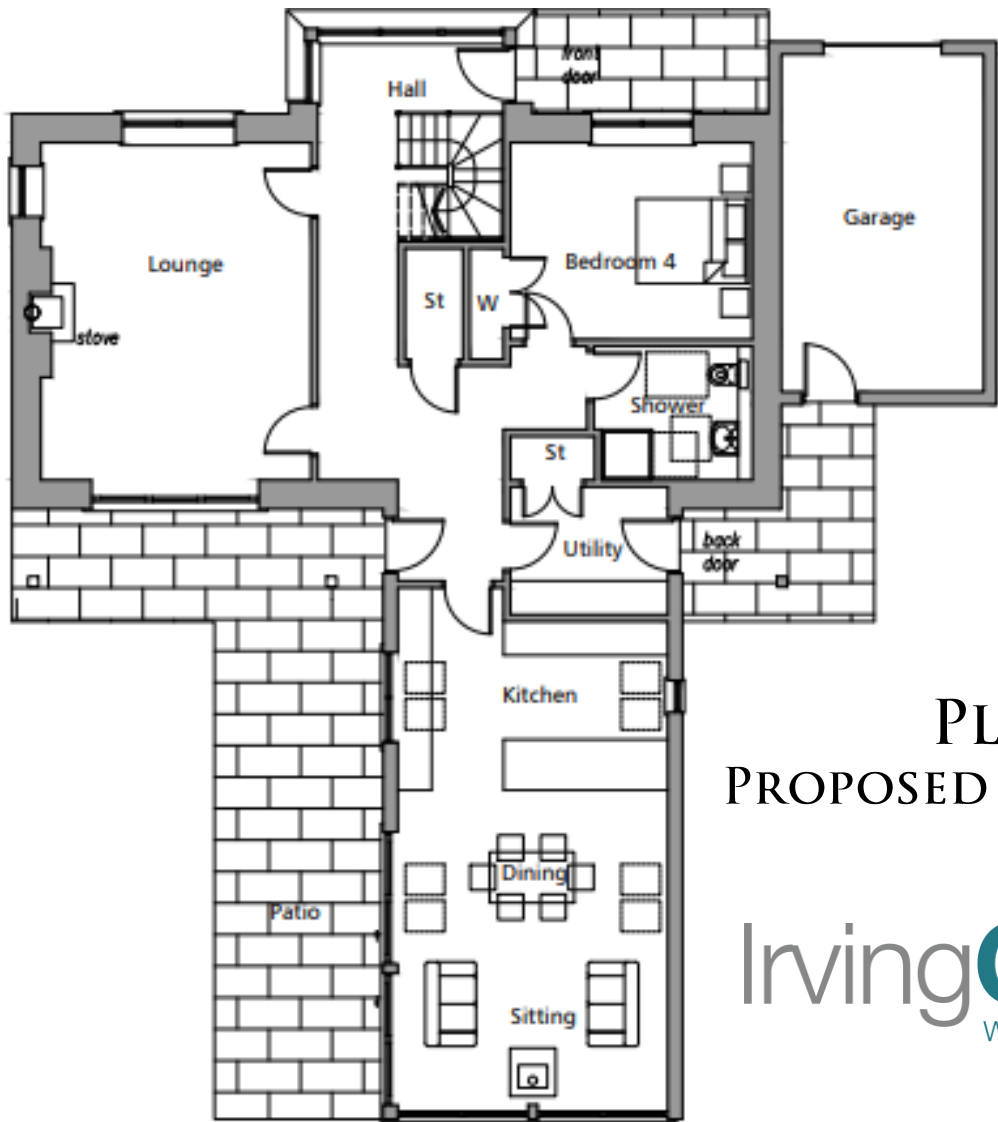




PLOT 1 -  
PROPOSED HOUSE DESIGN

Irving **Geddes**  
W.S. • Solicitors • Estate Agents





PLOT 2 -  
PROPOSED HOUSE DESIGN

Irving **Geddes**  
W.S. • Solicitors • Estate Agents







© OpenStreetMap contributors

© OpenStreetMap contributors

These particulars are believed to be correct, but their accuracy is not guaranteed and they do not form part of any contract. All measurements are approximate only.



**Crieff**  
25 West High Street, PH7 4AU  
Tel: 01764 653771

**Comrie**  
1 Drummond Street, PH6 2DW  
Tel: 01764 670325

**Aberfeldy**  
6 The Square, PH15 2DD  
Tel: 01887 822722