



40 Almond View, Seafield

Bathgate

Offers Over **£135,000**



40 Almond View

Seafield, Bathgate

Welcome to this lovely 2-bedroom terraced home, offering a unique blend of comfort and potential, situated in a serene location with uninterrupted scenic views. The property benefits from a private driveway and a sizeable rear garden, perfect for outdoor activities and relaxation.

As you step inside, you are greeted by a spacious living room providing ample space for both relaxation and entertainment. Adjacent to the living room is the kitchen, which has a practical layout and boasts stunning outlooks, allowing you to create your dream culinary space.

The first floor houses two generous bedrooms and a modern bathroom. Both bedrooms offer plenty of room for restful nights and personal retreats. The recently upgraded bathroom features contemporary fittings and fixtures, enhancing your daily routine with a touch of luxury.



Enjoy picturesque landscapes right from your home, providing a tranquil and serene environment. Convenient off-street parking is available with your private driveway. A large rear garden offers endless possibilities for gardening enthusiasts, outdoor dining, and leisure activities.

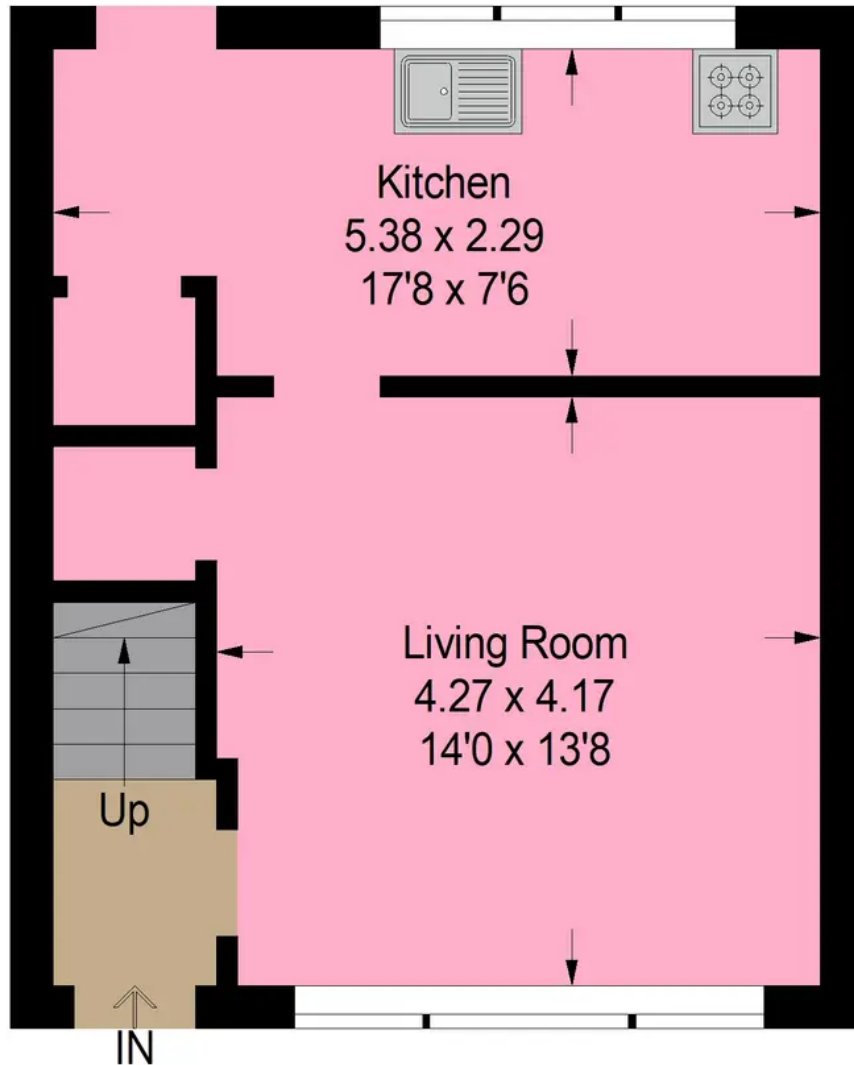
The property has benefited from new windows and doors in recent years, as well as harling for added durability and aesthetic appeal.

While the property requires some cosmetic upgrading, it presents an excellent opportunity to personalise and add value. With its spacious layout, recent enhancements, and enviable location, this home is perfect for those looking to invest in a property with great potential.

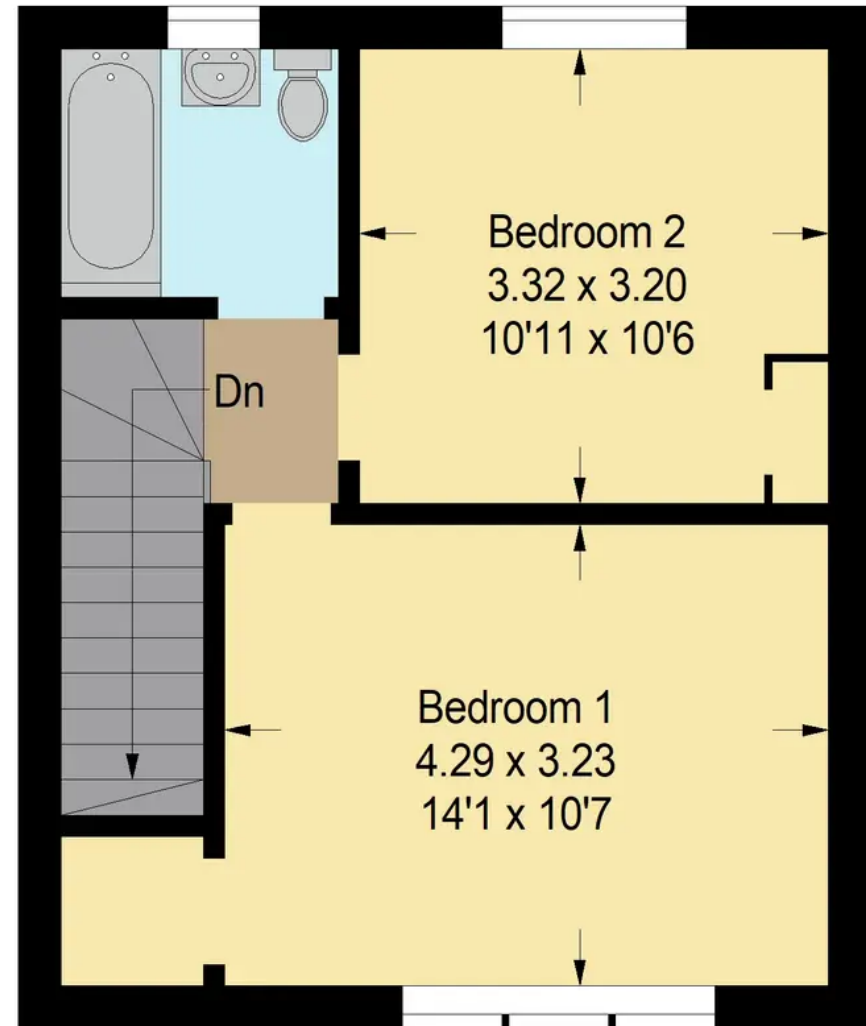




Approximate Gross Internal Area = 71.3 sq m / 767 sq ft



Ground Floor



First Floor

Illustration For Identification Purposes Only. Not To Scale (ID:1104909 / Ref:88664)



Bridges Properties

94 West Main Street, Whitburn - EH47 0QU

01501519435

info@bridges-properties.co.uk

www.bridges-properties.co.uk/

