



EH

EXQUISITE
HOME

BEAUTIFUL SOUTH NORFOLK

Just over four miles northwest of the bustling market town of Diss is the village of Bressingham on the Upper Waveney Valley, its name synonymous with the Bressingham Steam Museum and Gardens, created in 1953 by nurseryman Alan Bloom. Mentioned in the Domesday Book of 1086, it was then divided in ownership between William I and Bury St Edmunds Abbey. Its name is thought to derive from the Old English for "the homestead of Briosas's people." It has a pub and village shop, a village hall and playing fields. The parish church of St John the Baptist is Grade I listed and dates back to at least the fourteenth century.





In the centre of the village is another historic building, the former Primitive Methodist Chapel, built in 1900. These days, it is a smart, light filled contemporary home, but still retains many of its original features. There is a small gravelled frontage which provides space for two cars and dedicated parking. The bespoke front door opens into the porch which is painted in an attractive dark green with Moroccan style flooring and features the original chapel pews. It flows into the delightful dual aspect lounge, simply flooded with natural light pouring through the large lead weighted sash windows. A spacious area, it is the ideal family space with more than enough room for a dining room table and chairs, sofas and armchairs. There is a sleek, contemporary wood burner, perfect for chilly winter nights.

The lounge opens into the light and airy vaulted hallway with a useful downstairs cupboard. The curving light oak staircase with glass balustrade winds invitingly up to the first floor landing which is illuminated by a skylight. The stunning five piece family bathroom benefits from a freestanding bath with a highly polished finish, shower attachment, generous walk in shower, towel heater, his and hers counter top basins and plenty of storage. The open plan kitchen is to the rear of the chapel house, standing in what was the original Sunday School, dating back to 1813. A perfect marriage of design and functionality, there is an exposed brick wall, bifold doors bringing the outside in and flooding the kitchen with sunlight, a large island with induction hob and seating for 6, two integrated double electric ovens, an integrated dishwasher, fridge and freezer, a ceramic butler sink, very on trend pendant lighting unit over the island and solid oak worktops. Oak beams line the high ceiling. A room which is always light and inviting even on the darkest of winter days, this is the perfect space for relaxed cooking and entertaining, kitchen suppers and informal chats over a glass of wine. Next door is the handy utility room with a second sink and plumbing for a washing machine and with an oak stable door giving access to the outdoor space. The ground floor accommodation is completed by a small cloakroom. Underfloor heating is installed throughout the entire downstairs with individually controlled thermostats in each room.



A Stunning Contemporary Space



“The property been thoughtfully designed with an eye to space and light, whilst retaining the character of the building...”



The staircase leads to the generous landing with its skylight. Three bedrooms, all with skylights and two with the replica arched chapel windows plus a family bathroom lead from this space. As on the ground floor, all the internal doors are crafted from light oak, a nod to the original features of this turn of the century chapel. Two of the bedrooms are good sized doubles with two skylights and an arched window, making the very most of the natural light. Both look out over the High Street. The third bedroom is a small double and would make the ideal children's nursery, a play room or home office. The three piece shower room is crisp and contemporary with attractive grey patterned tiles, the style of which harks back to the fin de siècle style of the chapel, built on the cusp of the Victorian and Edwardian eras.

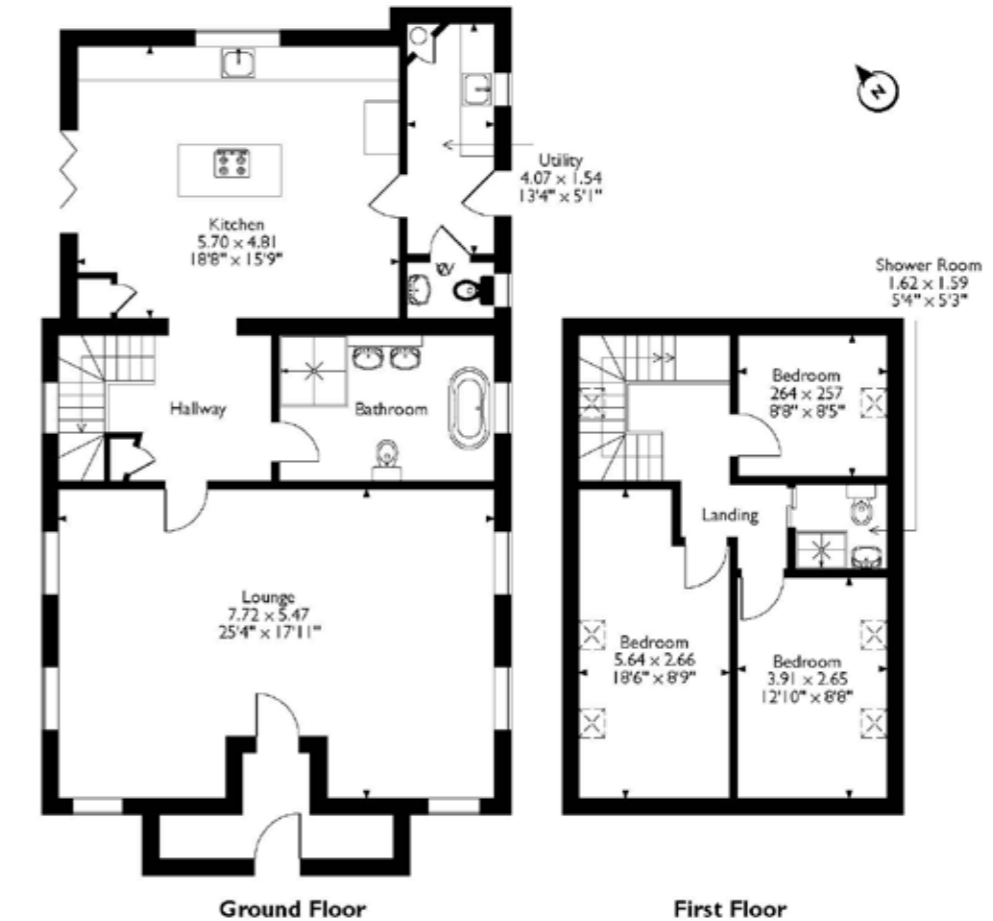


A Charming Courtyard...

There is a paved outdoor area accessed from the kitchen and the utility room. There is space for seating, ideal for al fresco dining, and more than enough room for container gardening. Low maintenance and neat, the outside space chimes naturally with the lofty proportions of this former chapel. The original outside toilet has been lovingly renovated into a useful storage shed.

The renovation has been very carefully considered, with a sympathetic nod to original features. Completed over a number of years using the finest supplies including Oak throughout, lead weighted sash windows and cast iron Victorian guttering. Modern and versatile, with original features in a charming village setting and with good transport links – the A140 runs south to Debenham and Needham Market and north to Norwich while the A1066 connects the village to Thetford, thirteen and a half miles to the east – this is a unique, cosy and welcoming home.

Approximate Gross Internal Area
151 Sq M/1625 Sq Ft



Please note that the location of doors, windows and other items are approximate and this floorplan is to be used for illustrative purposes only. Unauthorized reproduction is prohibited.



All measurements are approximate and quoted in imperial with metric equivalents and for general guidance only whilst every attempt has been made to ensure accuracy, they must not be relied on. The fixtures, fittings and appliances referred to have not been tested and therefore no guarantee can be given that they are in working order. Internal photographs are reproduced for general information and must not be inferred that any item shown is included with the property. These comments are the personal views of the current owner and are included as an insight into life at the property. They have not been independently verified and should not be relied on without verification and do not necessarily reflect the views of the agent. Registered in England and Wales, Company Reg No.10931078 Exquisite House, Alton Business Centre, Wherstead, Ipswich, Suffolk, United Kingdom, IP9 2AX.



Regional Office: Exquisite Home, Valley Lane, Wherstead, Ipswich, Suffolk, IP9 2AX
T +44(0)3455 651681 E enquiries@exquisitehome.co.uk

Exquisite Home, Sumpter House, 8 Station Road, Histon, Cambridge CB24 9LQ
T +44(0)3455 651681 E enquiries@exquisitehome.co.uk