

The Aston • Plot 525-527



Three Bedroom Terraced Home

The Aston • Available Plots: 525-531

FROM £400,000*

- Beautiful 3-bedroom terraced home
- Choice of internal layouts and finishes
- Vent Axia Mechanical Ventilation Heat Recovery (MVHR) system
- Mitsubishi air source heat pump
- Underfloor heating to ground floor
- Electric car charging port
- Open-plan living options
- Quiet countryside location with excellent transport links
- High-quality kitchen fixtures and fittings as standard with; integrated oven, hob, extractor fan, fridge/freezer, dishwasher and combined washer/dryer
- Downstairs W.C
- Ensuite shower room
- Family bathroom
- Turfed garden with paved patio area
- 10-year structural warranty

* Plot 525 is priced at £405,000

Please note: Computer generated images are for illustrative purposes and are designed to provide a visual guide of our new home designs. Actual surroundings may differ to the images.



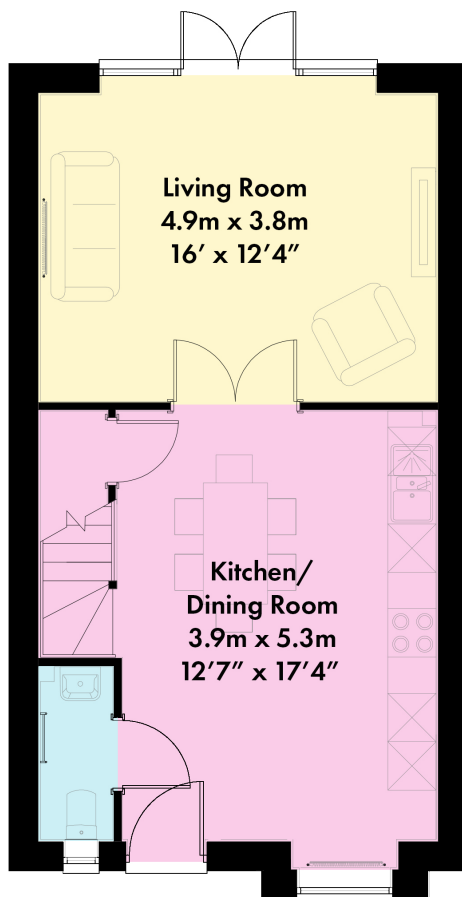
To find out more about these unique homes and to make a reservation call 01869 390 009 or email sales@gravenhill.co.uk

The Aston • Option A

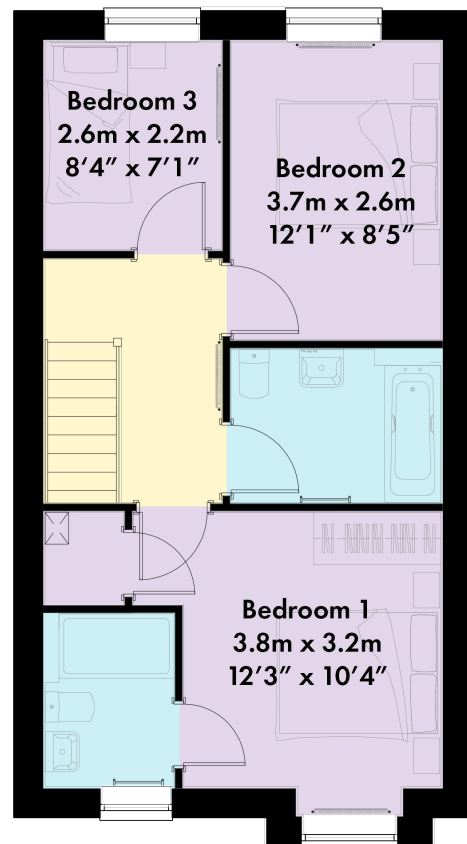
3 Bedroom Terraced Home

Approx gross internal area 1006 sq ft / 93.5 sq m

PLOT 525-527



Ground Floor



First Floor

Please note: Kitchen layout is subject to final kitchen design. Computer generated images are for illustrative purposes and are designed to provide a visual guide of our new home designs. Actual surroundings may differ to the images.

**Custom homes built with quality as standard, by
people you can trust.**

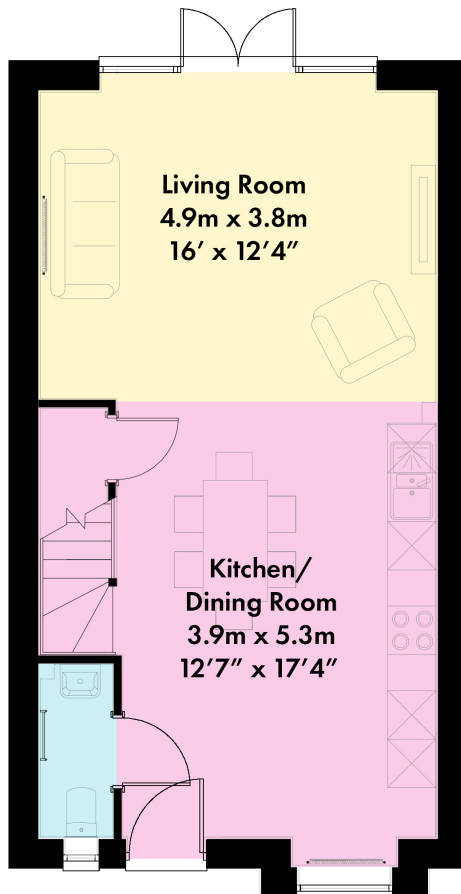
To find out more about these unique homes and to make
a reservation call 01869 390 009 or email sales@gravenhill.co.uk

The Aston • Option B

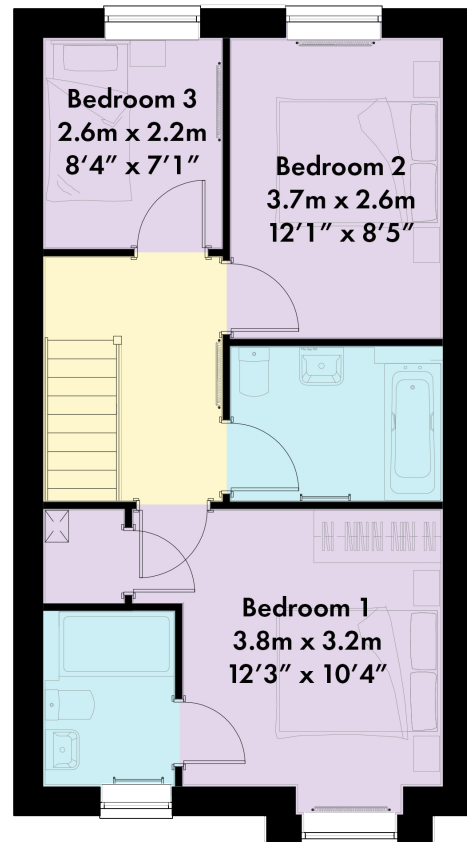
3 Bedroom Terraced Home

Approx gross internal area 1006 sq ft / 93.5 sq m

PLOT 525-527



Ground Floor



First Floor

Please note: Kitchen layout is subject to final kitchen design. Computer generated images are for illustrative purposes and are designed to provide a visual guide of our new home designs. Actual surroundings may differ to the images.

**Custom homes built with quality as standard, by
people you can trust.**

To find out more about these unique homes and to make
a reservation call 01869 390 009 or email sales@gravenhill.co.uk

The Aston

3 Bedroom Terraced Home

Approx gross internal area 1006 sq ft / 93.5 sq m

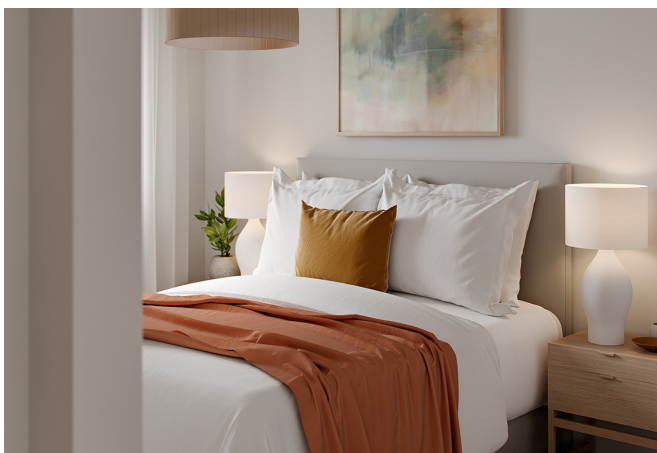
PLOT 525-527



Kitchen/Dining Room



Living Room



Bedroom 1

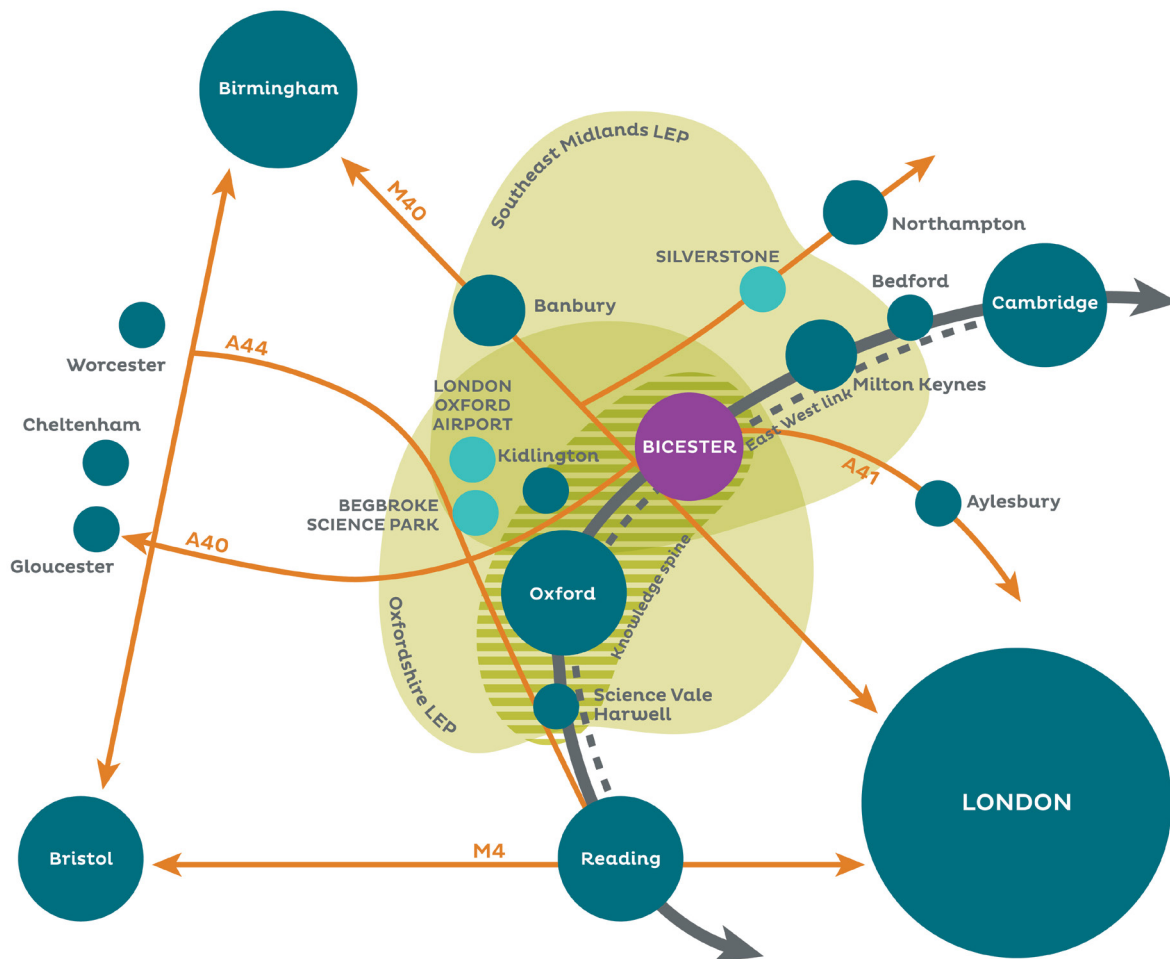


Family Bathroom

Please note: Kitchen layout is subject to final kitchen design. Computer generated images are for illustrative purposes and are designed to provide a visual guide of our new home designs. Actual surroundings may differ to the images.

To find out more about these unique homes and to make
a reservation call 01869 390 009 or email sales@gravenhill.co.uk

An unbeatable location with excellent transport links.



CONNECTIVITY/TRANSPORT

- Local Park and Ride routes direct to Bicester and Oxford.
- Travel to London by train in under an hour.
- Travel to Oxford by train or bus.
- Improvement plans for roads to reduce town centre congestion and residential areas.

- Car**
- Junction 9 M40 - 3.3 miles / 5 mins
 - Oxford - 15 miles / 25 mins
 - Birmingham - 1 hr 6 mins
- Bus**
- Bicester - 5 mins
 - Oxford - 40 mins
- Train**
- Oxford Parkway - 8 mins
 - Oxford - 15 mins
 - London Marylebone - 47 mins
 - Birmingham - 1 hr 6 mins