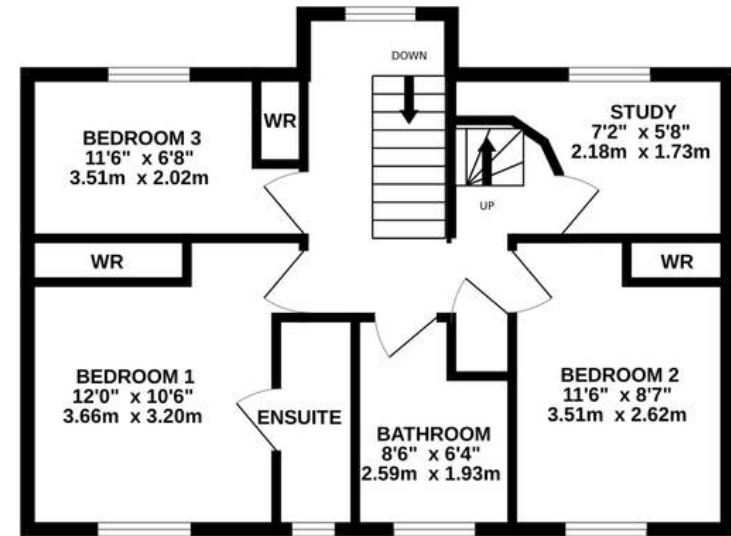




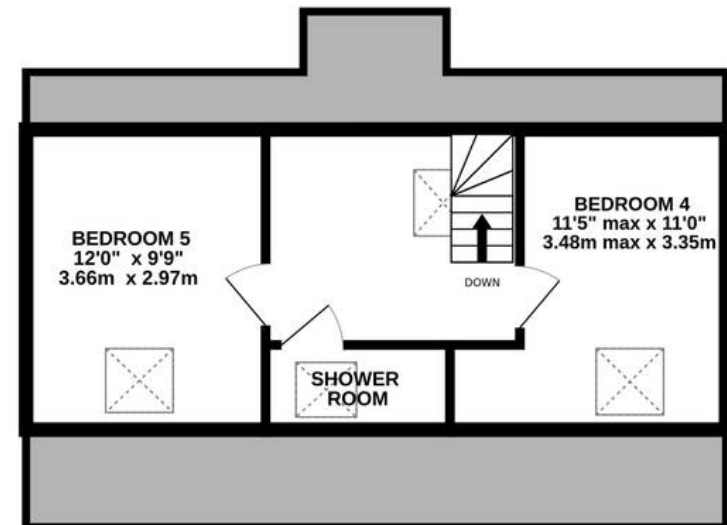
29 Whitebeam Park, Huddersfield
Huddersfield

£450,000

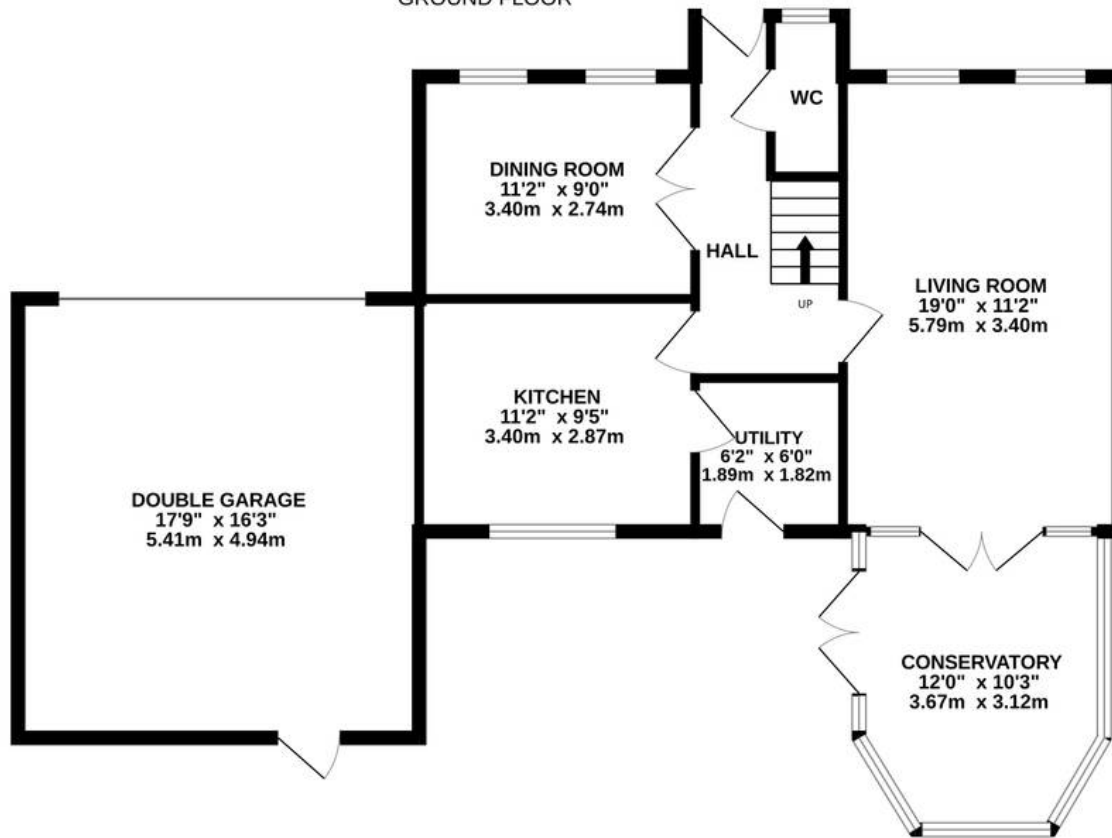
1ST FLOOR



2ND FLOOR



GROUND FLOOR



WHITEBEAM PARK

Whilst every attempt has been made to ensure the accuracy of the floorplan contained here, measurements of doors, windows, rooms and any other items are approximate and no responsibility is taken for any error, omission or mis-statement. This plan is for illustrative purposes only and should be used as such by any prospective purchaser. The services, systems and appliances shown have not been tested and no guarantee as to their operability or efficiency can be given.

Made with Metropix ©2024



29 Whitebeam Park

Huddersfield, Huddersfield

Situated at the top of the cul de sac, a five bedroom double fronted detached house with attached double garage, overlooking a southerly facing rear garden and with views at the front across to Grimescar woods.

This spacious family home has accommodation ranged over three floors with PVCU double glazing, gas central heating, security alarm and briefly comprising to the ground floor entrance hall, downstairs WC, living room with conservatory, dining room, breakfast kitchen and utility room. First Floor landing leading to three bedrooms with master en suite, bathroom and study. Second floor, two further bedrooms and shower room. Externally there is a double width tarmac driveway leading to an attached double garage together with gardens laid out to front and rear.

Council Tax band: E

Tenure: Freehold





Ground Floor

A composite panelled and frosted double glazed door opens into the entrance hall, this has a ceiling light point, ceiling coving, laminate flooring, central heating radiator and to one side a spindled staircase rises to the first floor, from the hallway access can be gained to the following rooms..-

Downstairs WC

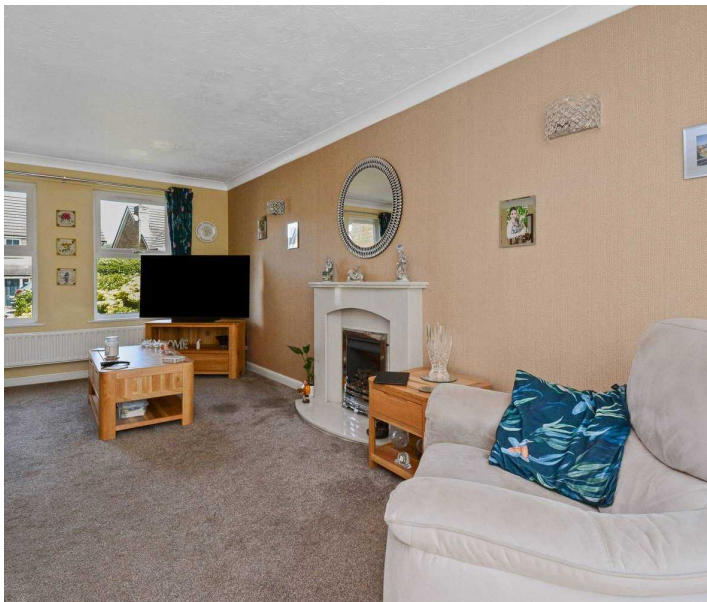
6' 6" x 2' 6" (1.98m x 0.76m)

With a frosted PVCU double glazed window, ceiling light point, central heating radiator, laminate flooring and fitted with a suite comprising vanity unit incorporating wash basin with chrome Monobloc tap and tiled splash back together with a low flush WC.

Living Room

19' 0" x 11' 2" (5.79m x 3.40m)

A well proportioned reception room which has two PVCU double glazed windows looking out over the front garden together with PVCU double glazed windows and french doors to the rear which give access to the conservatory. There is ceiling coving, four wall light points, two central heating radiators and as the main focal point of the room there is a feature marble fire place which is home to a coal effect gas fire resting on a marble hearth.



Conservatory

12' 0" x 10' 3" (3.66m x 3.12m)

Once again this is a well proportioned room which enjoys a southerly aspect over the rear garden and has PVCU double glazed windows and french doors, Pelmet led down lighters and tiled flooring.

Kitchen

11' 2" x 9' 5" (3.40m x 2.87m)

With PVCU double glazed window looking out over the rear garden, there is a ceiling light point, laminate flooring and fitted with a range of cream base and wall cupboards, drawers, these are complimented by overlying granite worktops which include circular granite breakfast bar, there are tiled splash backs, inset sink with chrome mixer tap, glazed display cupboard with glass shelving and down lighter, Rangemaster cooker with extractor hood over, integrated dishwasher, integrated fridge and integrated freezer. To one side a door gives access to a utility room.



Utility Room

6' 0" x 6' 2" (1.83m x 1.88m)

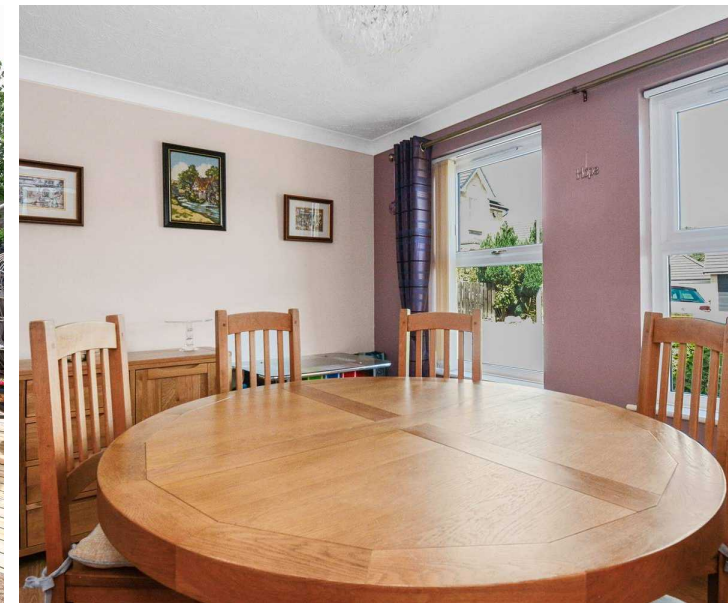
With ceiling light point, laminate flooring, base cupboard with overlying worktop and inset single drainer stainless sink with chrome mixer tap and tiled splash back, there is under counter space for washing machine, space for fridge freezer, wall mounted ideal gas fired central heating boiler, central heating radiator and PVCU sealed unit double glazed door giving access to the rear garden.



Dining Room

11' 2" x 9' 0" (3.40m x 2.74m)

This is approached through twin timber doors and is situated adjacent to the living room with two PVCU double glazed windows looking out over the front garden and with views stretching across to Grimescar woods. There is a ceiling light point, ceiling coving, central heating radiator and laminate flooring.





First Floor

Landing

With a PVCU double glazed window with views across to Grimescar woods, there is a ceiling light point, useful storage cupboard. From the landing access can be gained to the following rooms..-

Bedroom One

12' 0" x 10' 6" (3.66m x 3.20m)

A double room with PVCU double glazed window looking out over the rear garden, there is a ceiling light point, ceiling coving, central heating radiator and a fitted floor to ceiling sliding door mirror front wardrobe. To one side a door gives access to an en suite shower room.

En Suite Shower Room

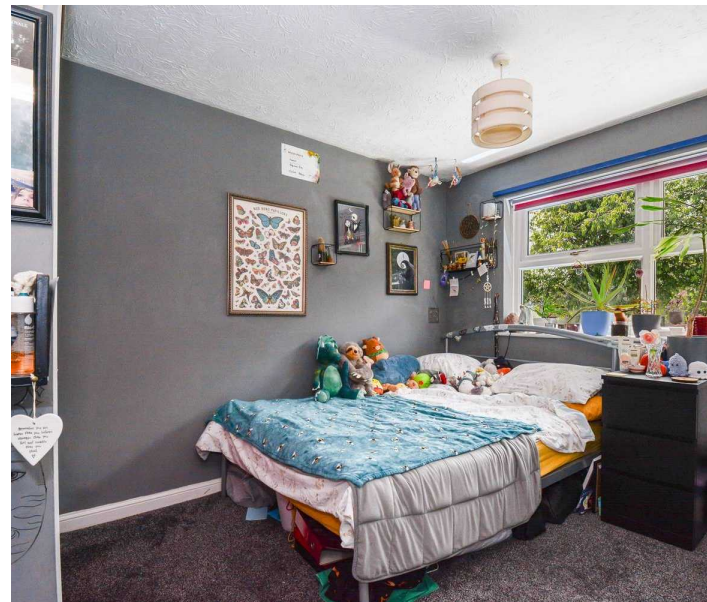
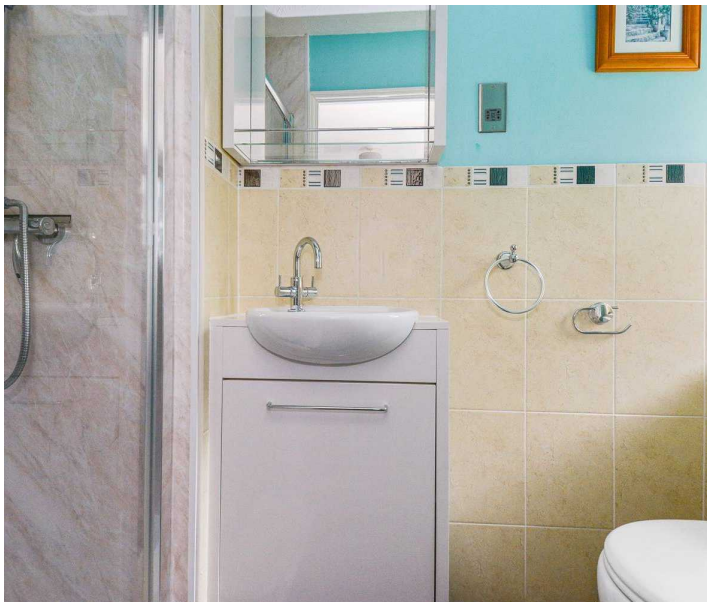
8' 6" x 3' 2" (2.59m x 0.97m)

With ceiling light point, extractor fan, frosted PVCU double glazed window, part tiled walls, tiled floor, shaver socket, central heating radiator and fitted with a suite comprising vanity unit incorporating wash basin with chrome mixer tap, low flush WC and shower cubicle with chrome shower fitting.

Bedroom Two

11' 6" x 8' 7" (3.51m x 2.62m)

Once again this enjoys a pleasant aspect over the rear garden through a PVCU double glazed window, there is a ceiling light point, central heating radiator and fitted wardrobe.





Second Floor

Landing

With a Velux double glazed window and inset led down lighters, from here access can be gained to the following rooms..-

Bedroom Four

12' 0" x 9' 9" (3.66m x 2.97m)

With inset led down lighters, Velux double glazed window and central heating radiator.

Bedroom Five

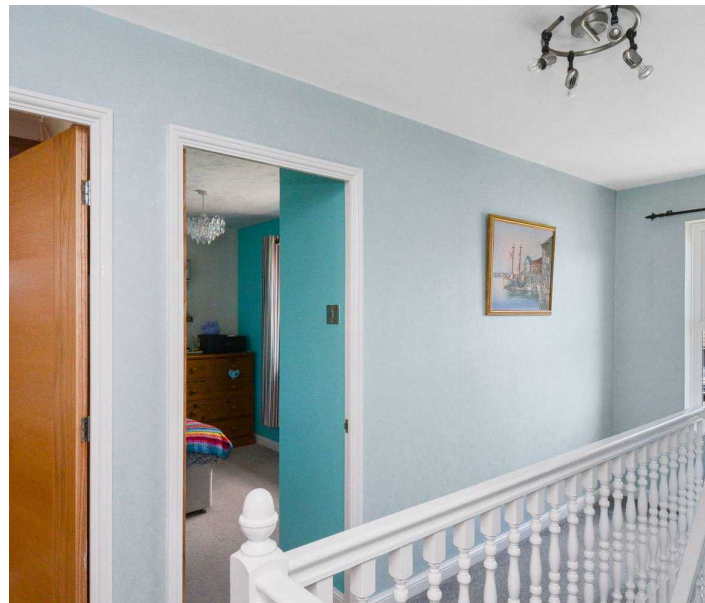
11' 0" x 11' 5" (3.35m x 3.48m)

With Velux double glazed window, central heating radiator and inset led down lighters.

Shower Room

7' 6" x 3' 6" (2.29m x 1.07m)

With a Velux double glazed window, part tiled walls, tiled floor, ladder style heated towel rail and fitted with a suite comprising pedestal wash basin with chrome Monobloc tap, low flush WC and tiled shower cubicle with chrome shower fitting.



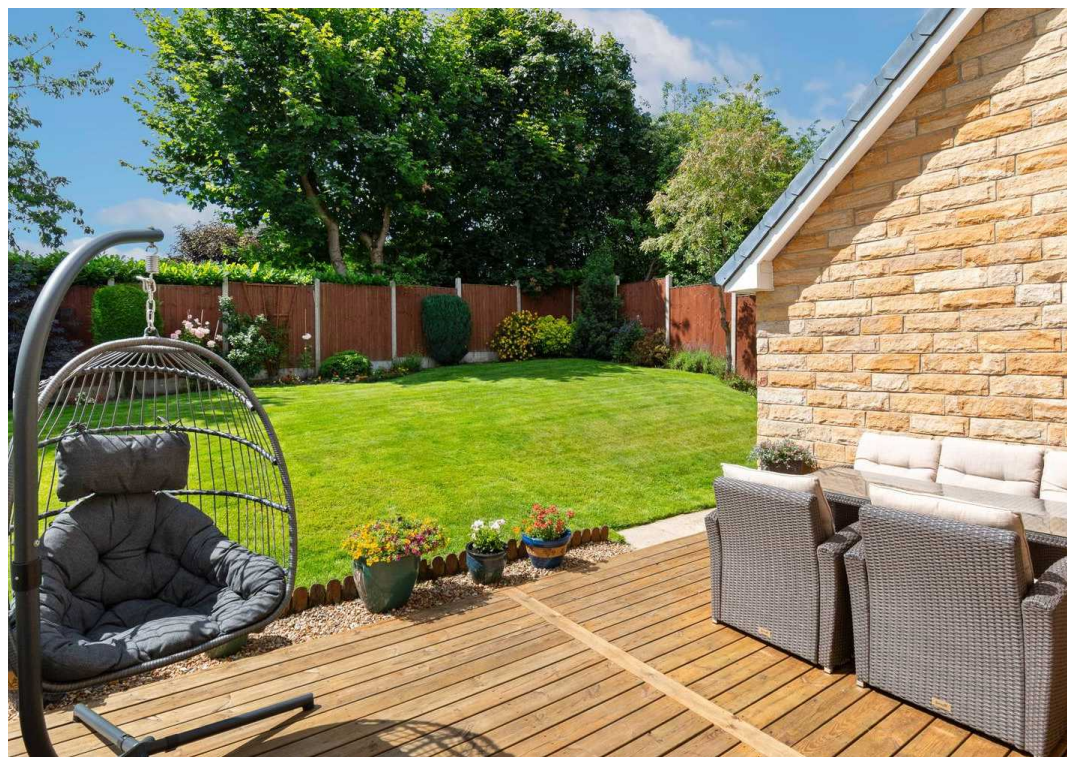
GARDEN

To the front of the property there is a low maintenance garden with a lawn, planted flowers and shrubs, gravelled and flagged area. To the right hand of the double garage there is a flagged pathway with timber hand gate giving access to the rear. The rear garden is generously proportioned and enjoys a southerly aspect with shaped lawn, planted trees, flowers and shrubs together with an area of timber decking which can be accessed from the conservatory and the utility room. There is an outside cold water tap and external lighting.

Allocated parking

To the right hand side of the property there is a double width tarmac driveway which provides off road parking and in turn leads to an attached double garage. Double Garage is 17'9 x 16'3 with an electric sectional door, courtesy door, power, light and with some useful roof void storage.





VIEWING For an appointment to view, please contact the Huddersfield Office on 01484 651878

BOUNDARY OWNERSHIP The boundary ownerships and tenure of the property have not been checked on the title deeds for any discrepancies or rights of way if any (This is a standard statement on all our brochures due to the Property Misdescription's Act) **COPYRIGHT** Unauthorised reproduction prohibited.

FREE VALUATIONS If you are thinking of a move then take advantage of our FREE valuation service, telephone our nearest office for a prompt and efficient service.

CONSUMER PROTECTION FROM UNFAIR TRADING REGULATIONS 2008 Simon Blyth for themselves and for the vendors or lessors of this property, whose agent they are, have made every effort to ensure the details given have been prepared in accordance with the above act and to the best of our knowledge give a fair and reasonable representation of the property.

Please note: 1. There is a six inch measurement tolerance or metric equivalent and the measurements given should not be entirely relied upon and purchasers must make their own measurements if ordering carpets, curtains or other equipment. 2. None of the main services, i.e. gas, water, electricity, drainage or central heating system (if any) have been tested in any way whatsoever. This also includes appliances which are to be left in situ by the vendors

PURCHASERS MUST SATISFY THEMSELVES AS TO THE CONDITION AND EFFECTIVENESS OF ANY SUCH APPLIANCES OR SERVICES FLOOR PLANS NOT TO SCALE - FOR IDENTIFICATION PURPOSES ONLY.

MAILING LIST Keep up to date with all our new properties. Let us know your price range, the area and type of home you require by registering on our mailing list.

MORTGAGE ADVICE Simon Blyth Estate Agents understand that getting appropriate mortgage advice is a crucial part of the home buying process. Finding a suitable mortgage has always been something of a daunting experience which is why we would like to introduce you to our independent mortgage advisors. They provide tailored mortgage solutions through a wealth of experience in the mortgage and property market and offer access to the full unrestricted range of products available. Our advisors are dedicated to providing ongoing guidance and advice throughout the entire house purchase process keeping you, your estate agent and solicitor involved with continual updates on the progress. Once in your new home they will be available for ongoing support to build a long term relationship for your future mortgage planning. Your home may be repossessed if you do not keep up repayments on your mortgage. For friendly expert advice on your mortgage requirements, or to discuss the potential of making your ideas a reality then please call in or phone for a chat.

OFFICE OPENING TIMES 7 DAYS A WEEK

Monday to Friday - 8:45 am to 5:30 pm

Saturday - 9:00 am - 4:00 pm Sunday - 11:00 am - 2:00 pm



Simon Blyth Estate Agents

Simon Blyth Estate Agents, 26 Lidget Street - HD3 3JP

01484 651878

huddersfield@simonblyth.co.uk

www.simonblyth.co.uk/

Wakefield	Huddersfield	Holmfirth	Kirkburton	Penistone	Sheffield	Barnsley	Pontefract	Leeds	Halifax
01924 361631	01484 651878	01484 689689	01484 603399	01226 762400	01143 216 590	01226 731730	01977 800259	0113 4689331	01422 417000