











£325,000
Freehold

61 Lovage Road, Whiteley
Fareham, Hampshire PO15 7NE



Quick View

	3 Bedrooms		Garage
	1 Living Room + Conservatory		1 Bathroom + Cloaks
	End of Terrace House		EPC Rating C
	Driveway Parking		Council Tax Band D

Reasons to View

- The lovely size master bedroom allows space for a dressing area in front of the built-in wardrobes, the perfect space to pamper yourself.
- With no onward purchase things could go through quickly, so get moving and book viewing today.
- You could imagine you're in the country tucked away here adjacent to woodland, but it's just a 10 minute stroll across the Meadowside to the Shopping Centre.
- With a conservatory in addition to the large L-shaped living room you won't be short on living space here.
- Private driveway giving two spaces in tandem, with a covered car port, leading to the detached garage.
- Quiet end of cul de sac position with enclosed paved garden for easy maintenance.

Description

We love the position of this three bedroom end of terrace property which situated next to woodland, so you may well be lucky enough to spot a woodpecker, deer or even an owl or two! Shared access off the road leads to the driveway with space for two cars in tandem leading to the detached garage via the covered carport.

The front door, at the side, leads into the entrance hall which has the stairs leading up to the first floor and a built in storage cupboard. The cloakroom is fitted with a white suite and has a window to the front. The kitchen window looks out to the front and is fitted with lots of storage cupboards with built in double oven & hob. The living room to the rear is L-shaped giving defined spaces for sitting and dining. Double doors open to the conservatory which, combined, offer a good deal of living space with views out to the garden.

On the first floor are the three bedrooms and bathroom. The master bedroom is a great size spanning the width of the house, and with built in wardrobes offering good storage there's plenty of room in front to use as a dressing area. The second and third bedrooms are similar in size with views out to the front. The built in cupboard to bedroom three houses the gas combination boiler and there is fitted desk and storage which can remain. Outside, the low maintenance garden has been laid to patio offering a great little spot to enjoy a glass of wine at the end of a busy day.

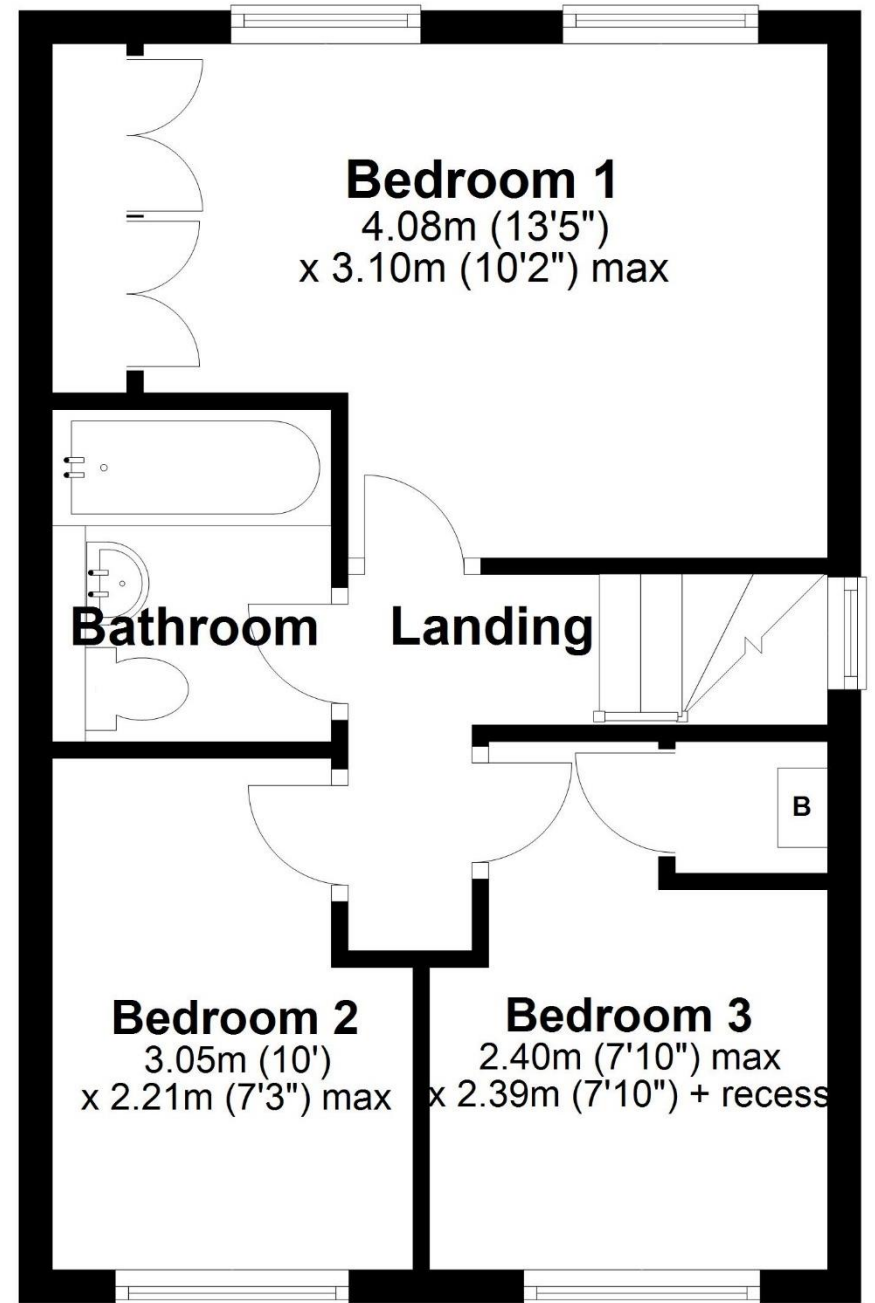
The Whiteley Shopping Centre is just a 10 minute walk away with multiple dining and entertainment options on offer. This property is offered chain free so don't delay that viewing, you could be moving soon.

Directions

<https://what3words.com/translate.runners.cadet>

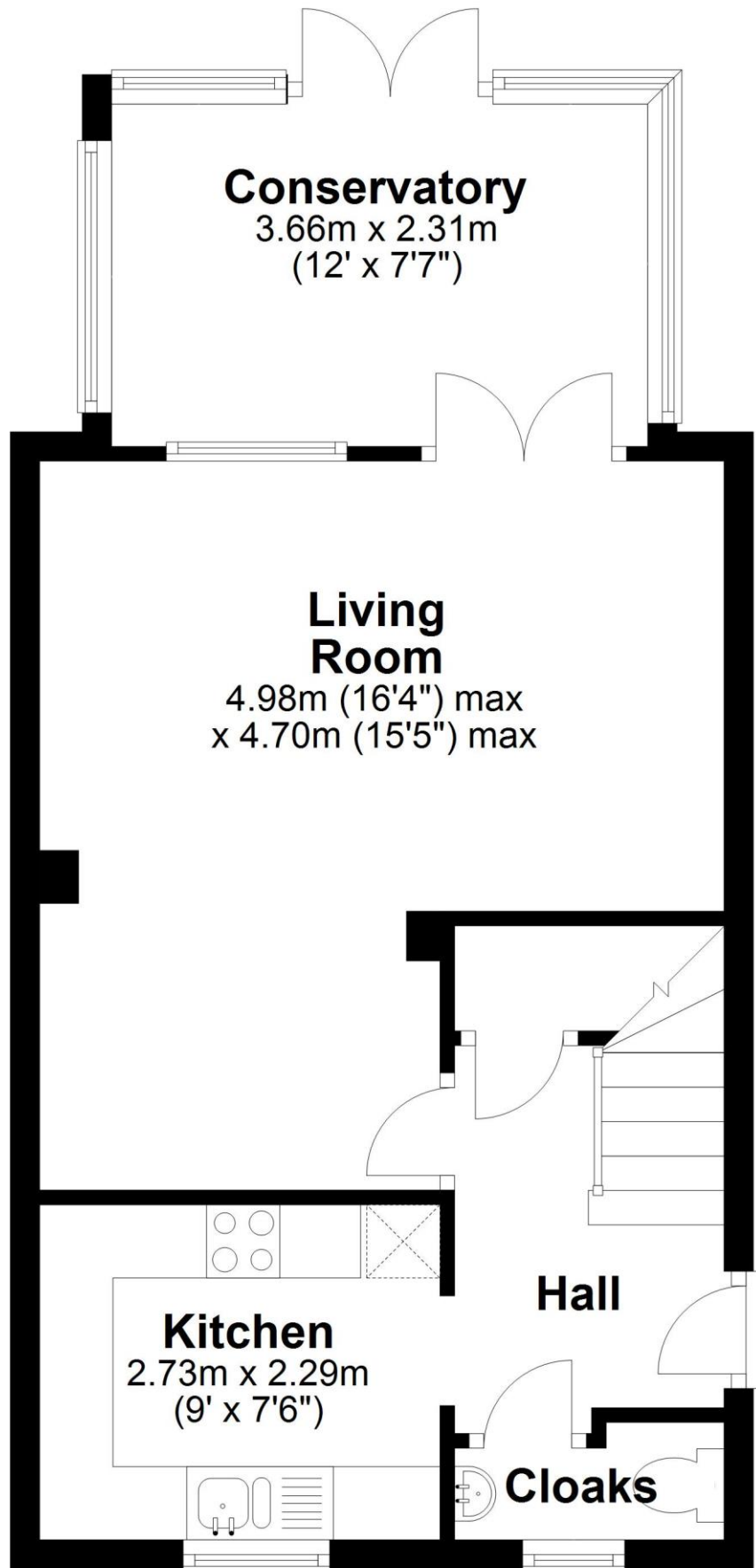
First Floor

Approx. 34.6 sq. metres (372.6 sq. feet)



Ground Floor

Approx. 43.3 sq. metres (465.9 sq. feet)



Total area: approx. 77.9 sq. metres (838.5 sq. feet)

Robinson Reade endeavour to supply accurate and reliable property information in line with Consumer Protection from Unfair Trading Regulations 2008, however please contact the office before viewing if there is any aspect which is particularly important to you and we will be pleased to provide the relevant information. These property details do not constitute any part of an offer or contract, all measurements are approximate. Any services, appliances and heating systems listed have not been checked. We must point out that where we introduce you to a third party who offers conveyancing, removal or financial services, e.g. legal, mortgage and insurance advice, we may earn a commission. For more information go to www.robinsoneade.co.uk/referral-fees. Robinson Reade Ltd, Registered office: 10 Middle Road, Park Gate, Southampton, SO31 7GH, Co Reg No: 5185152



Pop in to see us at 10 Middle Road, Park Gate, Southampton, Hampshire, SO31 7GH
Email us sales@robinsonreade.co.uk Visit us www.robinsonreade.co.uk
Call us on 01489 579009

Independent Sales & Letting Agents for the Strawberry Coast