



Rayls Road | Todwick | Sheffield | S26 1HZ

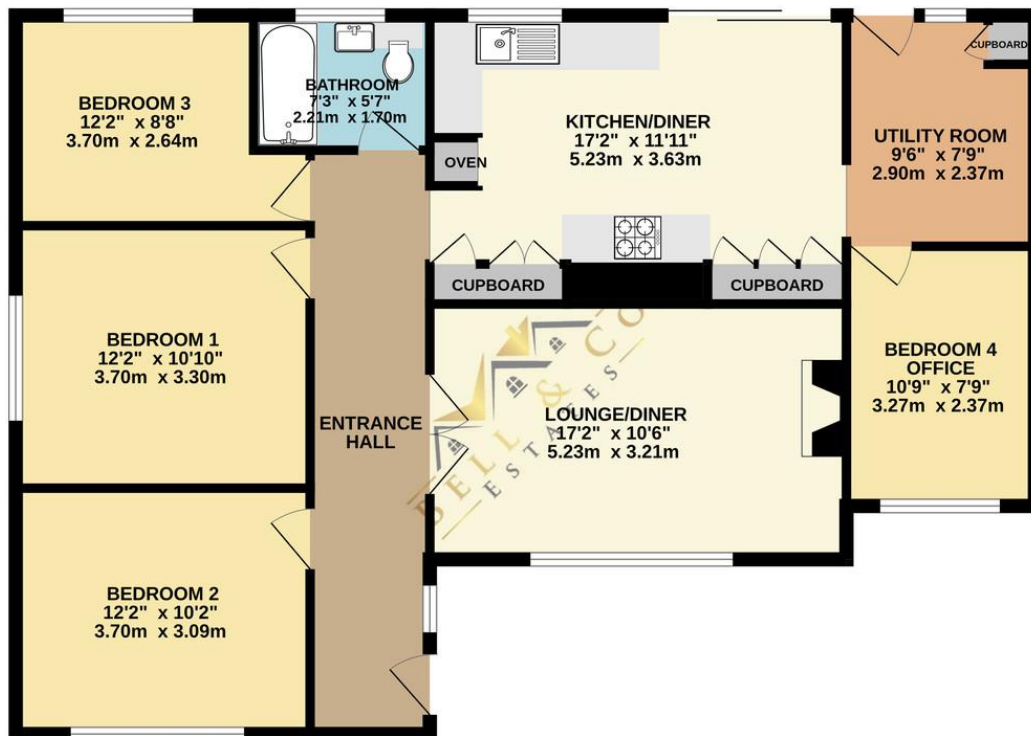
Guide Price £325,000 to £350,000

Bell & Co Estates are delighted to present this four-bedroom detached bungalow in the heart of the popular village location of Todwick. In brief, the property comprises: Large Welcoming Entrance Hallway which allows access to all main living areas. Front-Facing Cosy Lounge, ideal for relaxation and family time. Modern Kitchen/Diner featuring integrated appliances, plenty of storage cupboards, and patio doors opening onto the decking. Includes access to the utility room and rear garden, and a door to Bedroom Four, which is currently being used as an office. Three Generously Sized Bedrooms, accessed from the main hallway, offering ample living space for the whole family. To the front of the property the paved driveway provides off-road parking, with an additional grassed area and gated access to the rear garden. To the rear is a good-sized enclosed garden mainly laid to lawn, featuring a covered decking area and a separate patio to the side, perfect for outdoor entertaining and relaxation. The property is close to local amenities, transport links, and schools, making it a prime location for families. Viewing is highly recommended to fully appreciate what this home has to offer.

- Four Bedroom Detached Bungalow
- Cosy Lounge
- Modern Kitchen / Diner
- Modern Bathroom
- Enclosed rear Garden
- Off Road Parking
- Sought-after location



GROUND FLOOR
1034 sq.ft. (96.1 sq.m.) approx.



Contact Details

79 Wales Road
Kiveton Park
Sheffield
South Yorkshire
S26 6RA

www.bellcoestates.com
info@bellcoestates.com
03333 580590

3, Rayls Road
Todwick
SHEFFIELD
S26 1HZ

Energy rating

D

Valid until
21 March 2030

Certificate number
0963-2899-7877-2820-6215

Property type Detached bungalow

Total floor area 103 square metres

Agents Note: Whilst every care has been taken to prepare these sales particulars, they are for guidance purposes only. All measurements are approximate and for general guidance purposes only and whilst every care has been taken to ensure their accuracy, they should not be relied upon and potential buyers are advised to recheck the measurements