



Grantez House, Le Vier Mont, St Ouen
£1,650,000

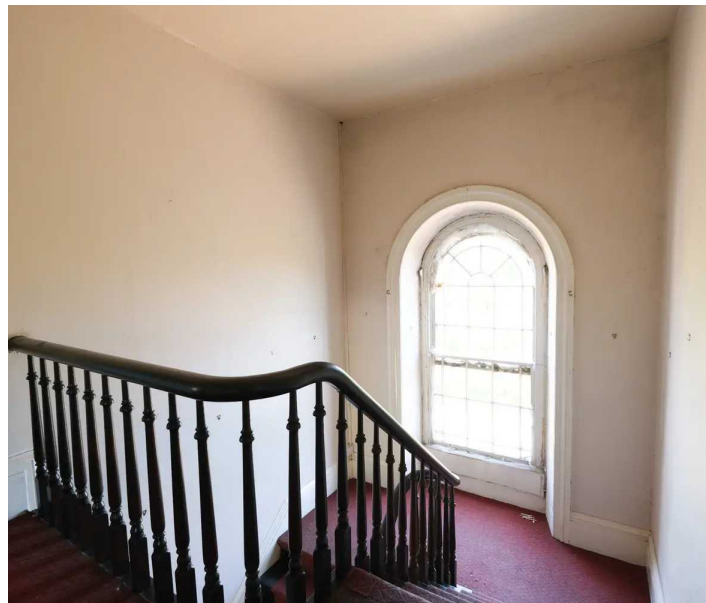
BROADLANDS

FINDING YOU A HOME SINCE 1972

Grantez House, Le Vier Mont

, St Ouen

- Multi-generational farm in rural St Ouen
- 4 bedroom main house with 3 bedroom annexe, and separate cottages
- In need of renovation throughout
- Private, walled garden
- Ample storage and space to create a fantastic home
- Close to the beach and many coastal walks
- Sole agent
- Contact harry@broadlandsjersey for more information



Grantez House, Le Vier Mont

, St Ouen

- Multi-generational farm in rural St Ouen
- 4 bedroom main house with 3 bedroom annexe, and separate cottages
- In need of renovation throughout
- Private, walled garden
- Ample storage and space to create a fantastic home
- Close to the beach and many coastal walks
- Sole agent
- Contact harry@broadlandsjersey for more information



Grantez House, Le Vier Mont

, St Ouen

Presenting a unique opportunity to acquire a multi-generational farm in rural St Ouen, this property has a 4-bedroom main farmhouse with a 3-bedroom annexe, additional separate cottage, and a staff flat. With characterful features and a private walled garden, this property offers immense potential for renovation and customisation, allowing buyers to realise their dream home.

Nestled in a tranquil location close to the beach and scenic coastal walks, this property provides the perfect blend of serenity and convenience. Offering ample storage space and the opportunity to transform, this property presents an exciting proposition for those seeking a rural lifestyle with easy access to the natural beauty of the surrounding area.





Living

With 3 reception rooms, and a large kitchen the property has ample space for the entire family. The annexe also has a good sized kitchen and living room.

Sleeping

4 Large double bedrooms with a house bathroom. An additional 3 bedrooms are in the annexe and also more in the cottage and apartment.

Outbuildings

The farm has a large barn that has a cottage on one side and an apartment on the other. There are also additional storage and garaging.

Garden

A large, safe, enclosed garden to the front of the property.

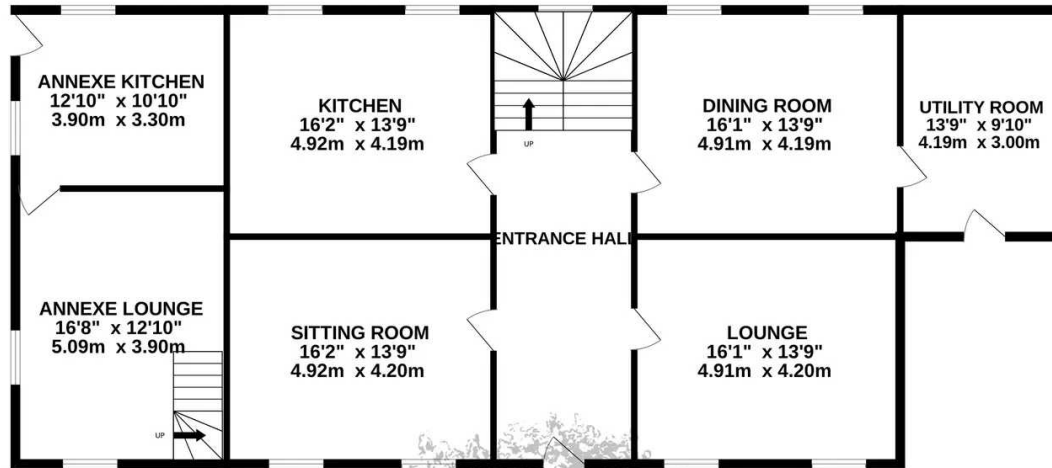
Services

Borehole water

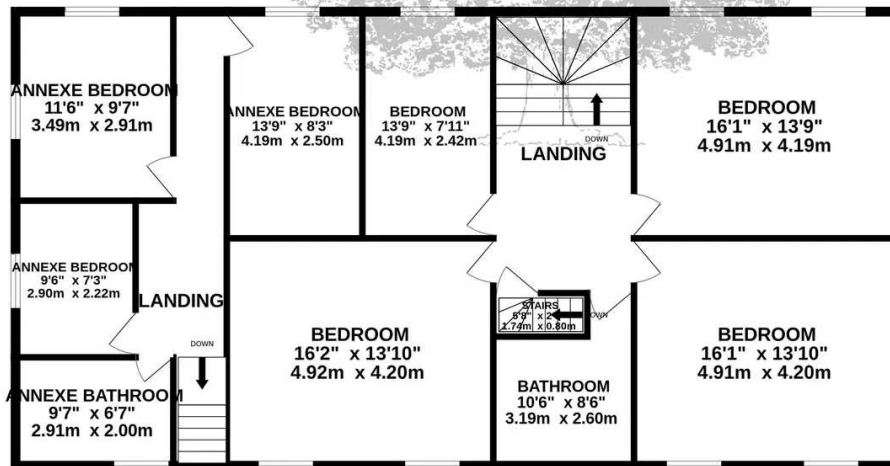




GROUND FLOOR
1611 sq.ft. (149.6 sq.m.) approx.



1ST FLOOR
1475 sq.ft. (137.1 sq.m.) approx.



TOTAL FLOOR AREA : 3086 sq.ft. (286.7 sq.m.) approx.

Whilst every attempt has been made to ensure the accuracy of the floorplan contained here, measurements of doors, windows, rooms and any other items are approximate and no responsibility is taken for any error, omission or mis-statement. This plan is for illustrative purposes only and should be used as such by any prospective purchaser. The services, systems and appliances shown have not been tested and no guarantee as to their operability or efficiency can be given.
Made with Metropix ©2024



FINDING YOU A HOME
SINCE 1972 · **B**

Broadlands

Broadlands Estates, Library Place - JE2 3NL

01534 880770 • enquiries@broadlandsjersey.com • www.broadlandsjersey.com/

BROADLANDS

FINDING YOU A HOME SINCE 1972