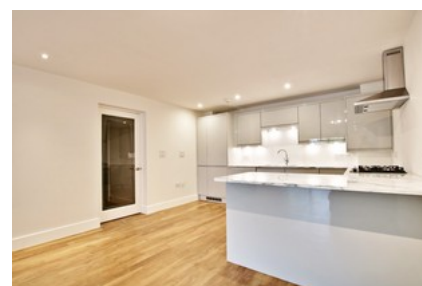




## Plaistow Lane Bromley



- ✓ Next To Sundridge Park Train Station
- ✓ Ground Floor
- ✓ Spacious Property
- ✓ Large Lounge
- ✓ Open Planned

- ✓ Allocated Parking
- ✓ Two Double Bedrooms
- ✓ Two Bathrooms
- ✓ Short Let Only
- ✓ Council Tax Band - E

**£1,775** PCM

Bedroom  2 Bathroom  2 Reception  1