

Warren Lane

Branston, Burton-on-Trent, DE14 3EN

John 
German






Warren Lane

Branston, Burton-on-Trent, DE14 3EN

£425,000

A two-story detached house with a white upper floor and a brick lower floor. The house features a brown tiled roof, a central chimney, and a satellite dish. A large conservatory with a glass roof and brick base is attached to the front. The house is surrounded by a well-maintained green lawn and various plants, including a large tree on the right and a garden bed on the left. The sky is overcast with grey clouds.

A lovely traditional 1930's detached home on a fabulous garden plot offering a superb character home in a popular residential location handy for amenities. Highlights include two reception rooms, conservatory, smart fitted kitchen, utility room, two bedrooms, en suite and family bathroom, potential to extend and modernise. No upward chain.

This handsome 1930's detached home stands on a fabulous garden plot, close to the centre of Branston with a wide range of amenities and facilities close by, together with schools for all ages, popular pubs, shops and excellent transport links provided by the A38. It is also just a few minutes' drive away from Burton-on-Trent town centre.

The house stands on a lovely plot with a large front garden which is established with shaped lawns, colourful borders a good expanse of driveway providing ample off road parking and access to the garage with an up and over front entrance door and door to the rear garden.

The front door opens into a glazed porch which in turn leads to the reception hallway with stairs and doors leading off. The living room is a light, bright and spacious room with bay window framing views to front, a fire surround providing the focal point and French doors opening through into a lovely conservatory, perfect for enjoying views across the rear garden. Across the hallway is the dining room with a bay window framing views to front and a fire surround providing the focal point. The kitchen is well appointed offering a lovely breakfast style kitchen equipped with a range of base and eye level units with work surfaces over, integrated oven, hob and extractor, breakfast bar, window framing views across the rear garden, door to side and door into a useful utility room with additional appliance space, extra storage and window to rear. Completing the ground floor accommodation is the guest WC with close coupled WC and wash hand basin.

To the first floor, the landing has a window pouring light onto the stairwell and doors leading off to two double bedrooms. The master is a particularly spacious double enjoying a dual aspect with windows front and rear together with an en suite shower room with shower cubicle, pedestal wash hand basin and WC. Bedroom two is also a generously sized double bedroom and the family bathroom is spacious, formally being a third bedroom, fitted with a suite comprising a corner bath, pedestal wash hand basin, bidet and WC. This could easily be converted back into a bedroom.

To the rear of the property, there is a pretty walled garden with established borders, shaped lawns and a paved terrace ideal for outside dining.

The property is available with the advantage of no upward chain and viewing is highly recommended to appreciate the character, accommodation and plot on offer.

Tenure: Freehold (purchasers are advised to satisfy themselves as to the tenure via their legal representative).

Property construction: Standard. **Parking:** Drive & garage.

Electricity supply: Mains. **Water supply:** Mains. **Sewerage:** Mains. **Heating:** Gas.

(Purchasers are advised to satisfy themselves as to their suitability).

Broadband type: See Ofcom link for speed: <https://checker.ofcom.org.uk/>

Mobile signal/coverage: See Ofcom link <https://checker.ofcom.org.uk/>

Local Authority/Tax Band: East Staffordshire Borough Council / Tax Band D

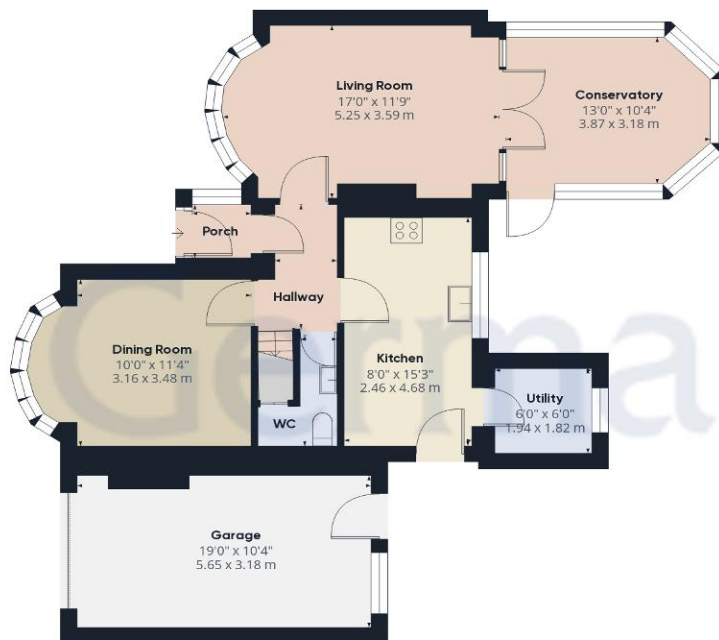
Useful Websites: www.gov.uk/government/organisations/environment-agency

Our Ref: JGA/16072024

The property information provided by John German Estate Agents Ltd is based on enquiries made of the vendor and from information available in the public domain. If there is any point on which you require further clarification, please contact the office and we will be pleased to check the information for you, particularly if contemplating travelling some distance to view the property. Please note if your enquiry is of a legal or structural nature, we advise you to seek advice from a qualified professional in their relevant field.







Ground Floor

Approximate total area⁽¹⁾

1381.01 ft²

128.3 m²



Floor 1

(1) Excluding balconies and terraces

While every attempt has been made to ensure accuracy, all measurements are approximate, not to scale. This floor plan is for illustrative purposes only.

GIRAFFE360



Agents' Notes

These particulars do not constitute an offer or a contract neither do they form part of an offer or contract. The vendor does not make or give and Messrs. John German nor any person employed has any authority to make or give any representation or warranty, written or oral, in relation to this property. Whilst we endeavour to make our sales details accurate and reliable, if there is any point which is of particular importance to you, please contact the office and we will be pleased to check the information for you, particularly if contemplating travelling some distance to view the property. None of the services or appliances to the property have been tested and any prospective purchasers should satisfy themselves as to their adequacy prior to committing themselves to purchase.

Referral Fees

Mortgage Services - We routinely refer all clients to APR Money Limited. It is your decision whether you choose to deal with APR Money Limited. In making that decision, you should know that we receive on average £60 per referral from APR Money Limited.

Conveyancing Services - If we refer clients to recommended conveyancers, it is your decision whether you choose to deal with this conveyancer. In making that decision, you should know that we receive on average £150 per referral.

Survey Services - If we refer clients to recommended surveyors, it is your decision whether you choose to deal with this surveyor. In making that decision, you should know that we receive up to £90 per referral.

AWAITING EPC MEDIA



John German

129 New Street, Burton-On-Trent, Staffordshire, DE14 3QW

01283 512244

burton@johngerman.co.uk

Ashbourne | Ashby de la Zouch | Barton under Needwood
Burton upon Trent | Derby | East Leake | Lichfield
Loughborough | Stafford | Uttoxeter

JohnGerman.co.uk Sales and Lettings Agent



