



4 Weavers Close

Witney, OX28 4TF

4 Weavers Close

Witney, Witney

This well-presented three-bedroom terraced house overlooks a small green and is conveniently located within walking distance of the town centre, shops, schools, and a regular bus service to Oxford.

The accommodation comprises of an entrance hall with a large storage cupboard, a cloakroom, a sitting room, a kitchen/dining room, laundry/storage area, three bedrooms, and one family bathroom.

The property also benefits from gas central heating, a good-sized garden, and off-road parking at the rear.

Council Tax band: C

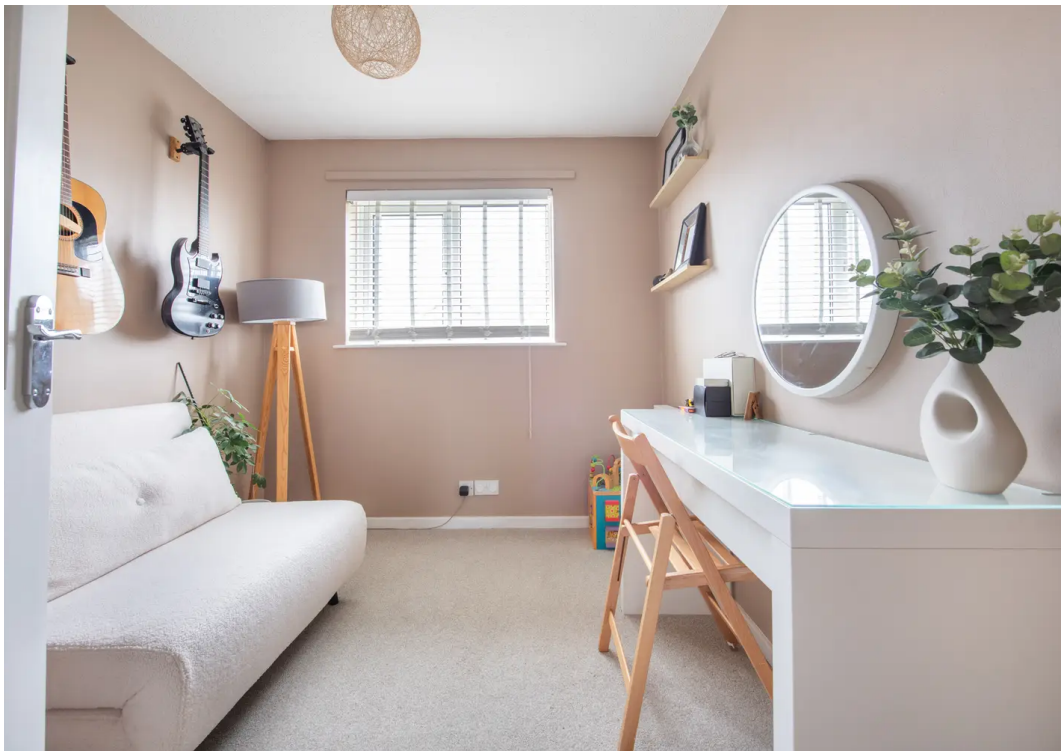
Tenure: Freehold

EPC Energy Efficiency Rating: C

Key Features:

- Three Bedrooms
- Terraced House
- Modern Eat-in Kitchen
- Separate Living Room
- Off-Road Parking
- Private Garden





4 Weavers Close

Approximate Gross Internal Area = 92.3 sq m / 994 sq ft

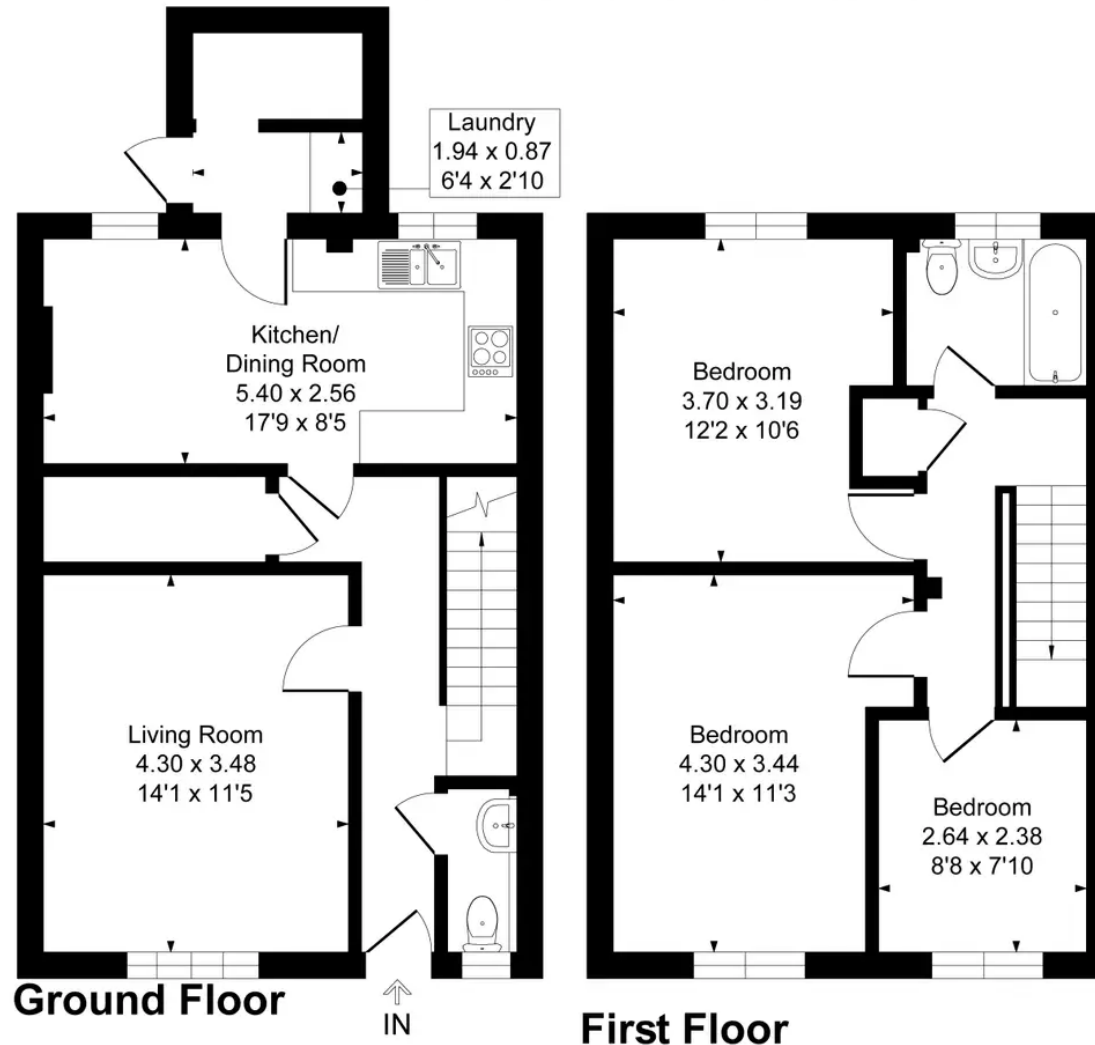


Illustration for identification purpose only, measurements approximate, and not to scale.

Martyn Cox & Company

6-8 Corn Street, Witney - OX28 6BL

01993 779020 • property@martyncox.com • www.martyncox.com



These particulars are approximate and for illustrative purposes only. They have been prepared in good faith and not intended to be part of an offer or contract. We have not carried out a structural survey and the services, appliances and fittings have not been tested. photos, measurements, floor plans, distances, lease details, services charges and ground rent are given as a guide only.