



Corio House, The Grange, SE1

£895,000







Corio House

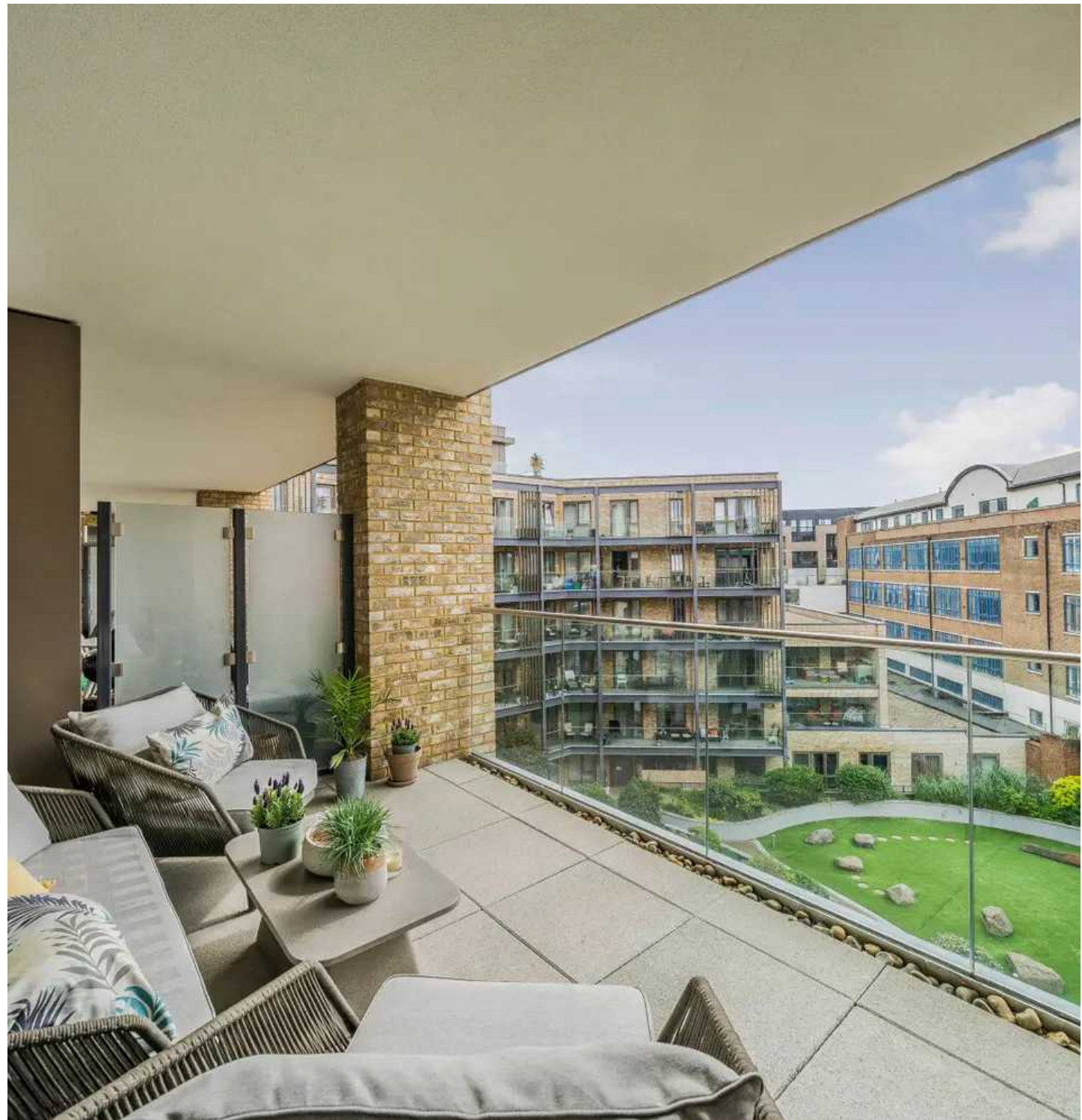
Council Tax band: E

Tenure: Leasehold

EPC Energy Efficiency Rating: B

EPC Environmental Impact Rating: A

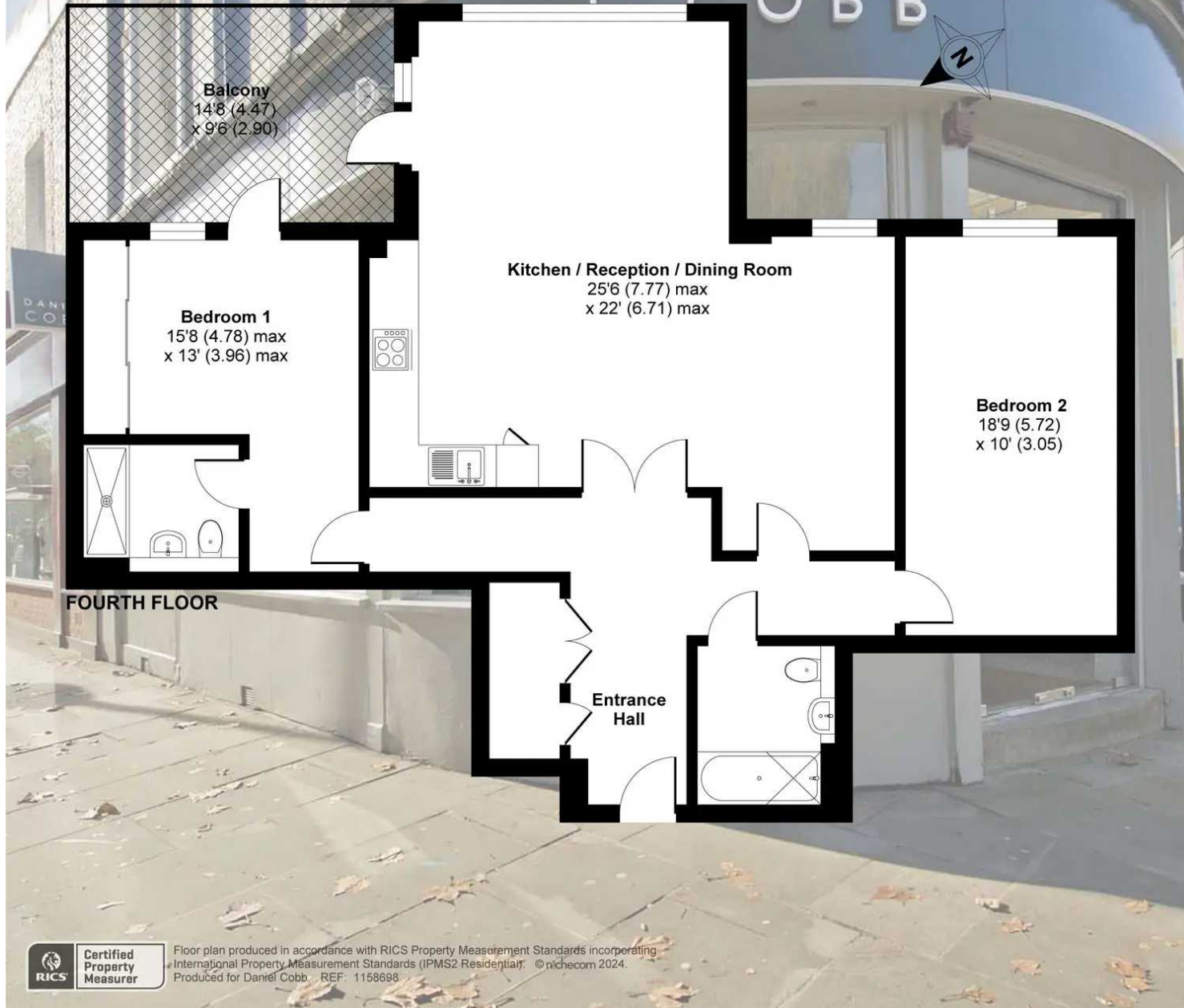
- 24/7 Concierge service
- Comprehensively fitted and fully equipped open plan kitchen
- Stylish and particularly spacious living space of approximately 560 square feet
- 2 double bedrooms
- Superbly appointed main bathroom and en suite shower room
- Beautifully presented and immaculately maintained interior of almost 1,250 square feet
- 250 year lease from 2014
- Sought after development, quietly and conveniently located
- 4th floor with fabulous views of the superbly maintained communal gardens
- Secure parking space in underground garage available separately

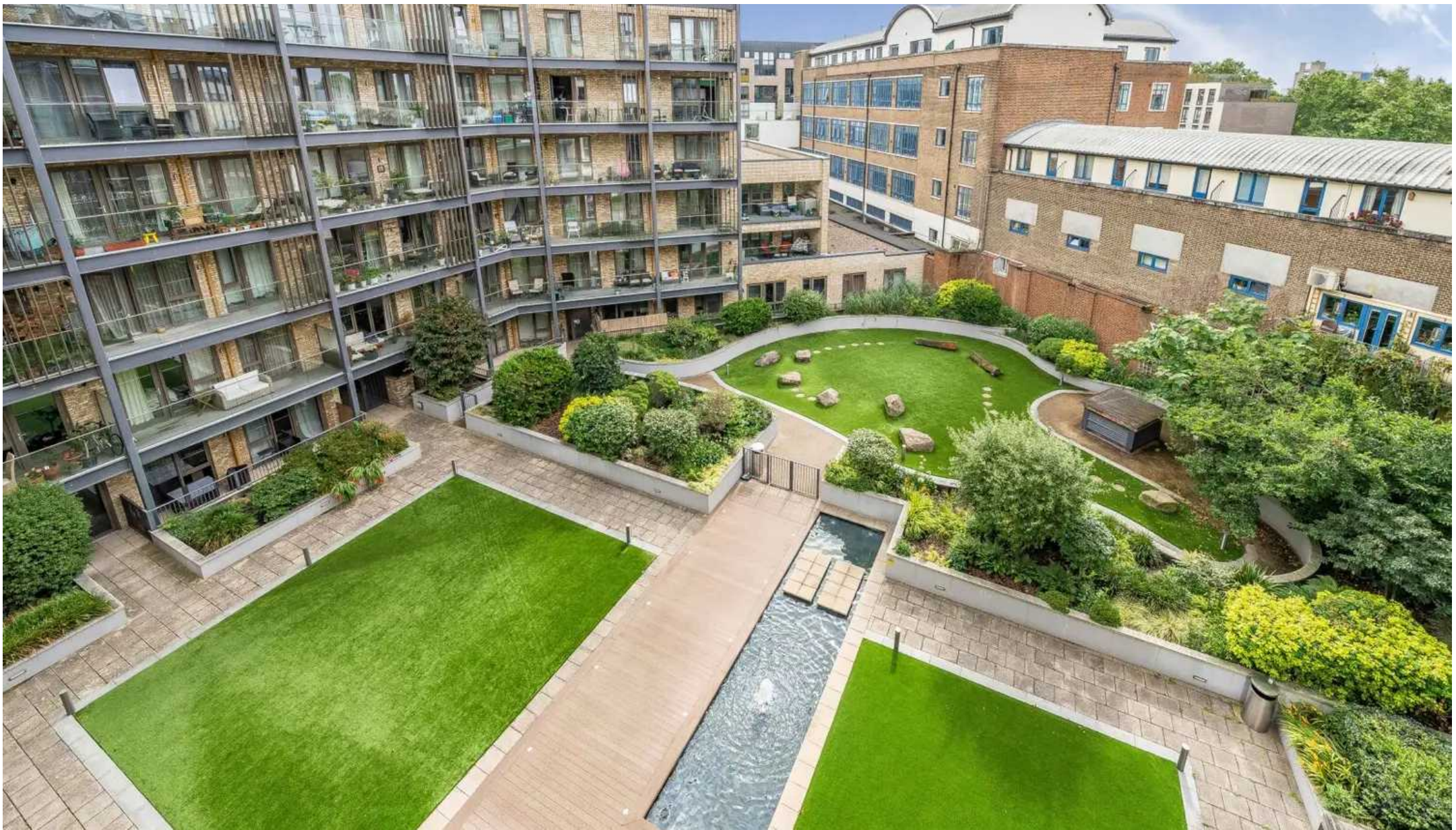


Corio House, 12 The Grange, London, SE1

Approximate Area = 1134 sq ft / 105.3 sq m

For identification only - Not to scale





Daniel Cobb

Daniel Cobb Estate Agents, 82-84 Bermondsey Street – SE1 3UD

020 7357 0026 • londonbridge@danielcobb.co.uk • www.danielcobb.co.uk/