



59 Candle Meadow, Colwick Park – NG2 4DW

Guide Price **£175,000**

DavidJames
the estate agent



59 Candle Meadow

Colwick Park, Nottingham

Council Tax band: A

Tenure: Freehold

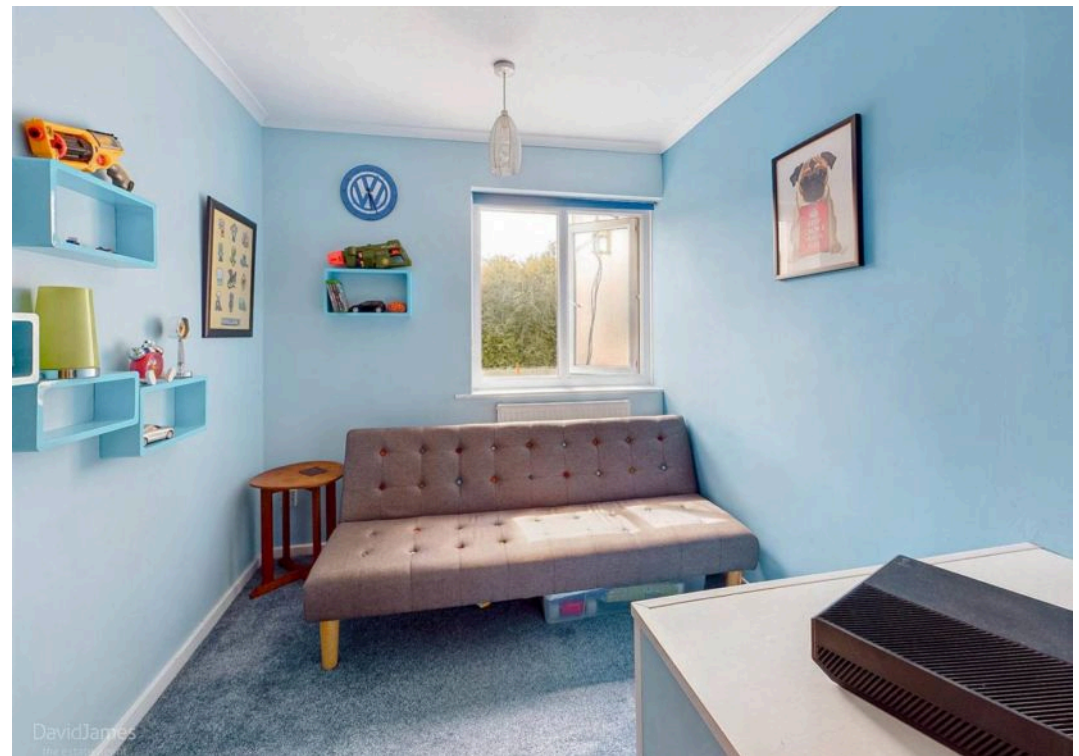
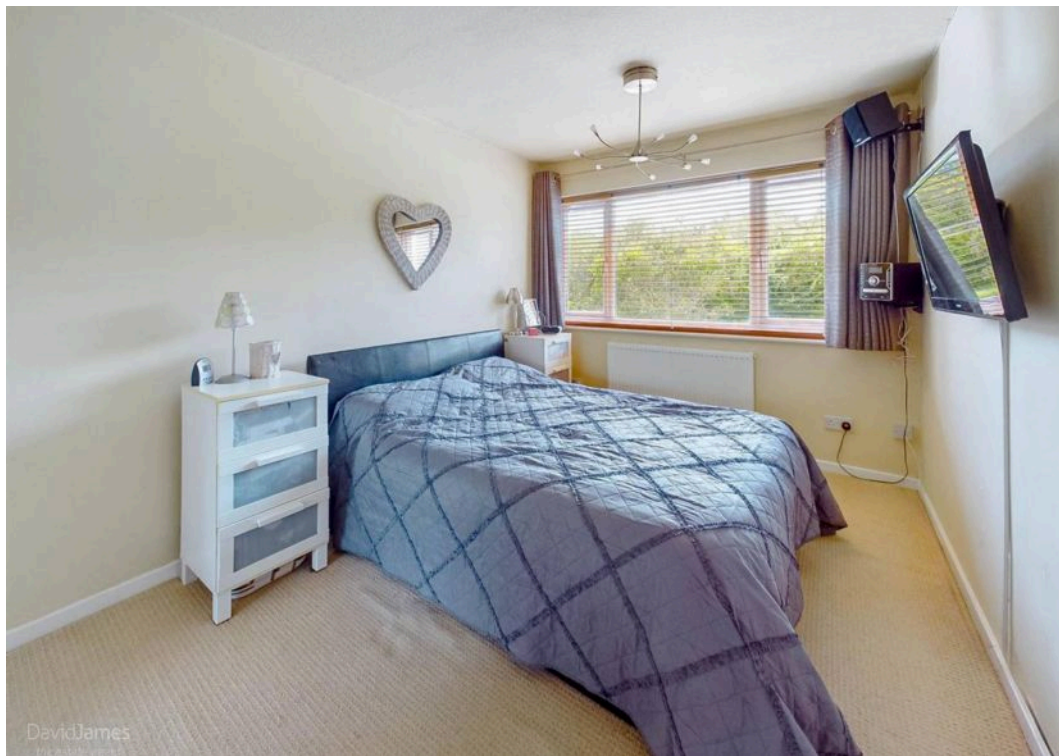
EPC Energy Efficiency Rating: C

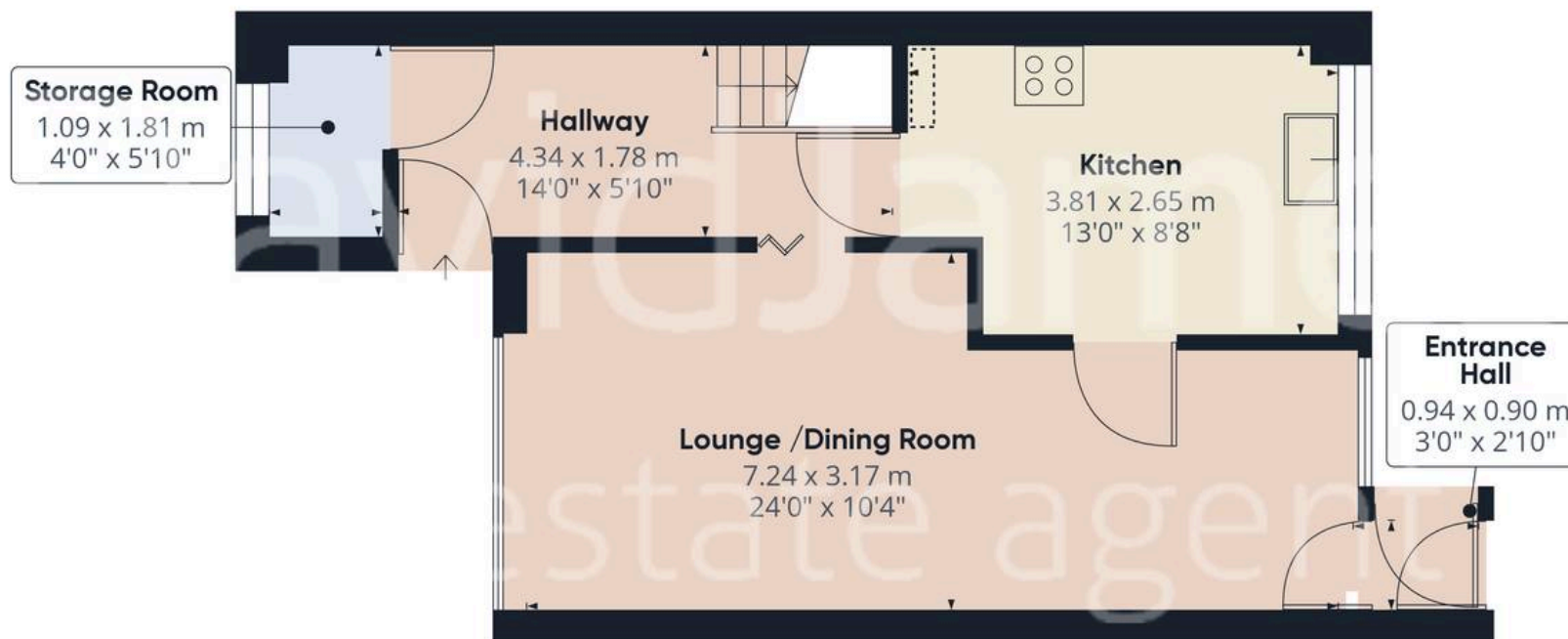
EPC Environmental Impact Rating: C

- Mid townhouse
- Three well maintained bedrooms, the largest of which has fitted wardrobes
- Good choice of local amenities, schools and public transport links to the city centre
- Close to Colwick Country Park
- Externally insulated walls and flat roof and recently installed gas central heating with combi boiler
- Spacious lounge/dining room with large window looking onto rear garden
- Modern kitchen with walnut effect worktop and slate coloured units
- Additional storage areas throughout the property
- Driveway that can easily accommodate two cars
- Well-maintained attractive courtyard style rear garden









Floor 0



Floor 1

Approximate total area⁽¹⁾

75.72 m²

815.04 ft²

Reduced headroom

0.22 m²

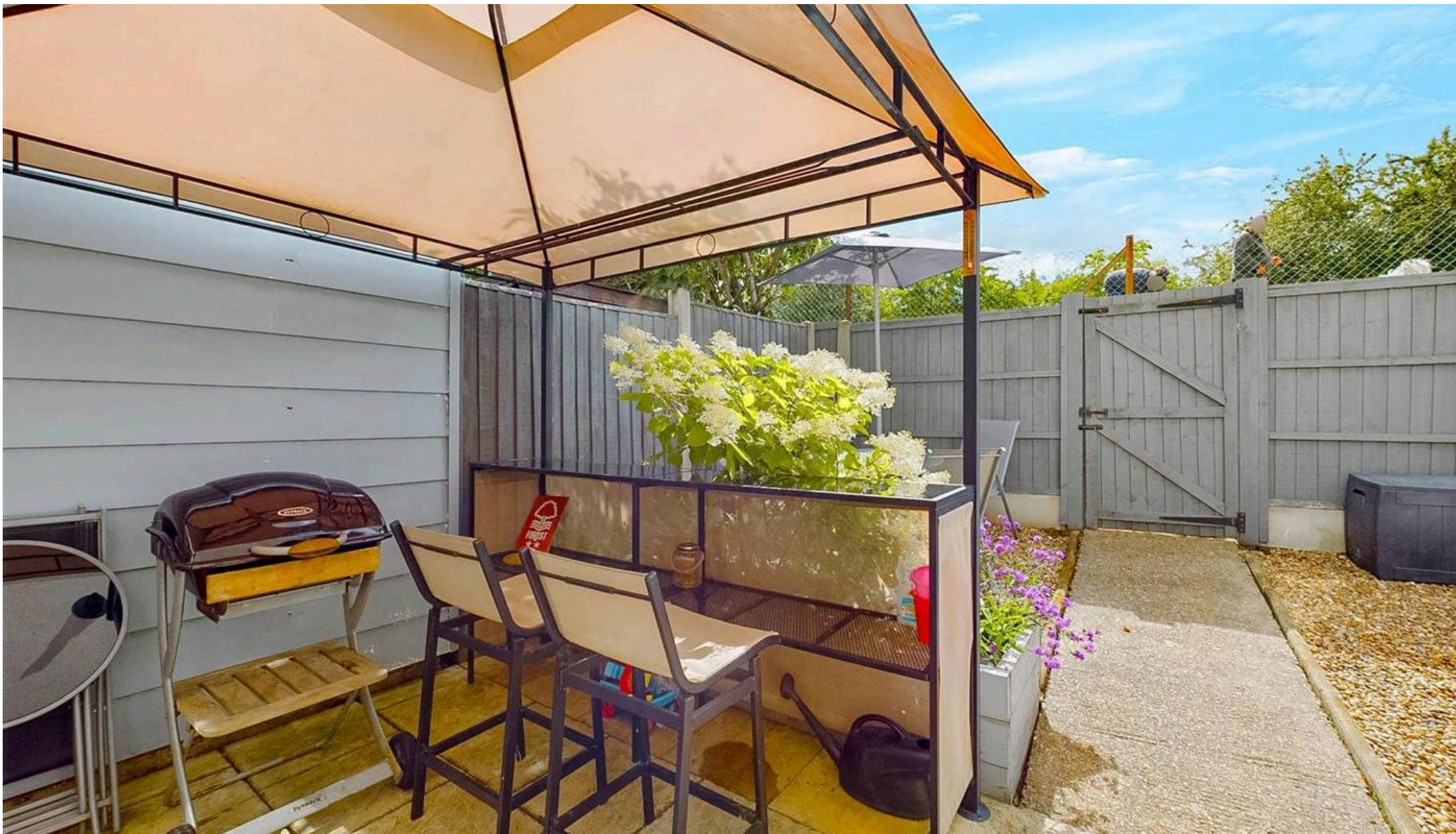
2.37 ft²

(1) Excluding balconies and terraces

Reduced headroom
(below 1.5m/4.92ft)

While every attempt has been made to ensure accuracy, all measurements are approximate, not to scale. This floor plan is for illustrative purposes only.

GIRAFFE360



David James Estate Agents

376 Carlton Hill, Carlton - NG4 1JA

0115 987 8957 • carlton@david-james.com • www.david-james.com

These particulars are produced in good faith and are set out as a general guide only. Measurements are approximate and floor plans are for illustrative purposes only. Services have not been tested. We have established professional relationships with third-party suppliers for the provision of services to Clients, details of which can be found on the property listing page on our website.