



Owen
Isherwood
CHARTERED SURVEYORS

Unit 4, Tuesley Farm, Godalming Surrey, GU7 1UG

TO LET | 3,000 TO 9,300 SQ FT

Large Industrial Cold Store

- Located on attractive farm close to the A3
- Rarely available industrial grade cold store
- In process of gaining B8 planning consent
- Solar Panels
- Can be split into 3 separate cold stores c. 3,000 sq. ft. each



Location

Tuesley Farm features 469 acres of well maintained farm land located under a 10 minute drive from the A3 linking to Guildford and the M25 in the north and the South Coast.

Description

Unit 4 is a fully functioning industrial grade cold store that provides up to 9,300 sq. ft. of cold storage. The owner is currently in the process of obtaining planning consent from agricultural to B8 storage and distribution use. Parking will be available on the site and the unit benefits from solar panels on the roof.

Unit 4 can be split into 3 smaller stores at 3,000 sq. ft. each or can be taken by a single operator. All lettings are subject to planning.

Accommodation

Name	sq ft	sq m	Availability
Unit - 4	9,300	864	Available
Total	9,300	864	

Rent

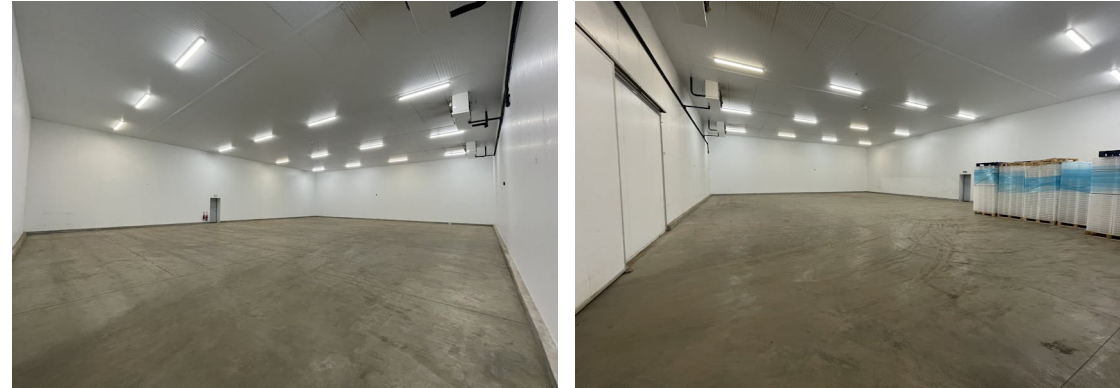
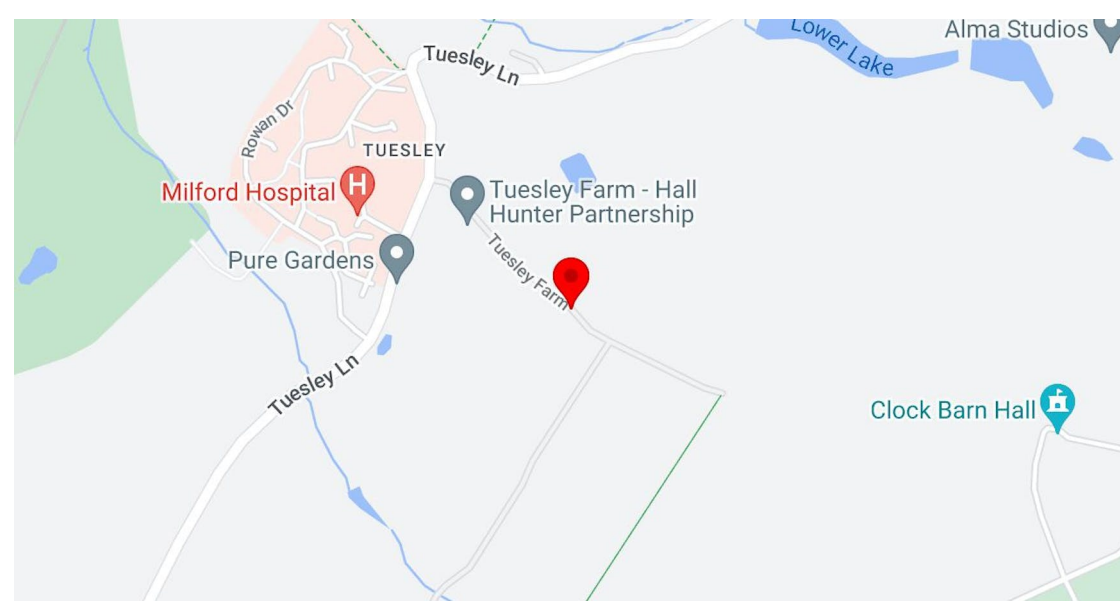
£15 per sq ft

Rates & Charges

Service charge: On Application
Estates charge: N/A
Rates payable: TBC

Legal costs

Each party to bear their own legal costs incurred in the transaction.



Contact

Adam Fenney

T: 01483 300176

M: 07983204530

E: adam@owenisherwood.com

owenisherwood.com | 01483 300 176

1 Wey Court, Mary Road, Guildford, Surrey GU1 4QU

These particulars do not constitute, or form any part of, any offer or contract, and whilst all the information given is believed to be correct, all interested parties must satisfy themselves of its accuracy. All prices and rents are quoted exclusive of VAT, unless otherwise stated