



26 Dalyell Place, Armadale

Bathgate

Offers Over £260,000



26 Dalzell Place

Armadale, Bathgate

Nestled in a quiet residential development in the heart of Armadale, this charming four-bedroom home offers a perfect blend of comfort and functionality, ideal for families seeking ample living space in a tranquil setting.

The ground floor hosts a spacious and inviting lounge featuring a bay window, providing abundant natural light and a cosy atmosphere for relaxation.

The open-plan kitchen and dining area is perfect for family meals and entertaining, with modern fittings and plenty of space for dining. Conveniently located off the kitchen is a utility room, providing additional storage and laundry facilities, as well as a practical downstairs toilet, ideal for guests and everyday convenience.



On the first floor, the well-proportioned master bedroom can host a king-sized bed, as well as additional furniture. Both bedroom two and three are spacious double bedrooms. The fourth bedroom perfect as a dressing room, nursery or home office.

The family bathroom is well-appointed with modern fixtures.

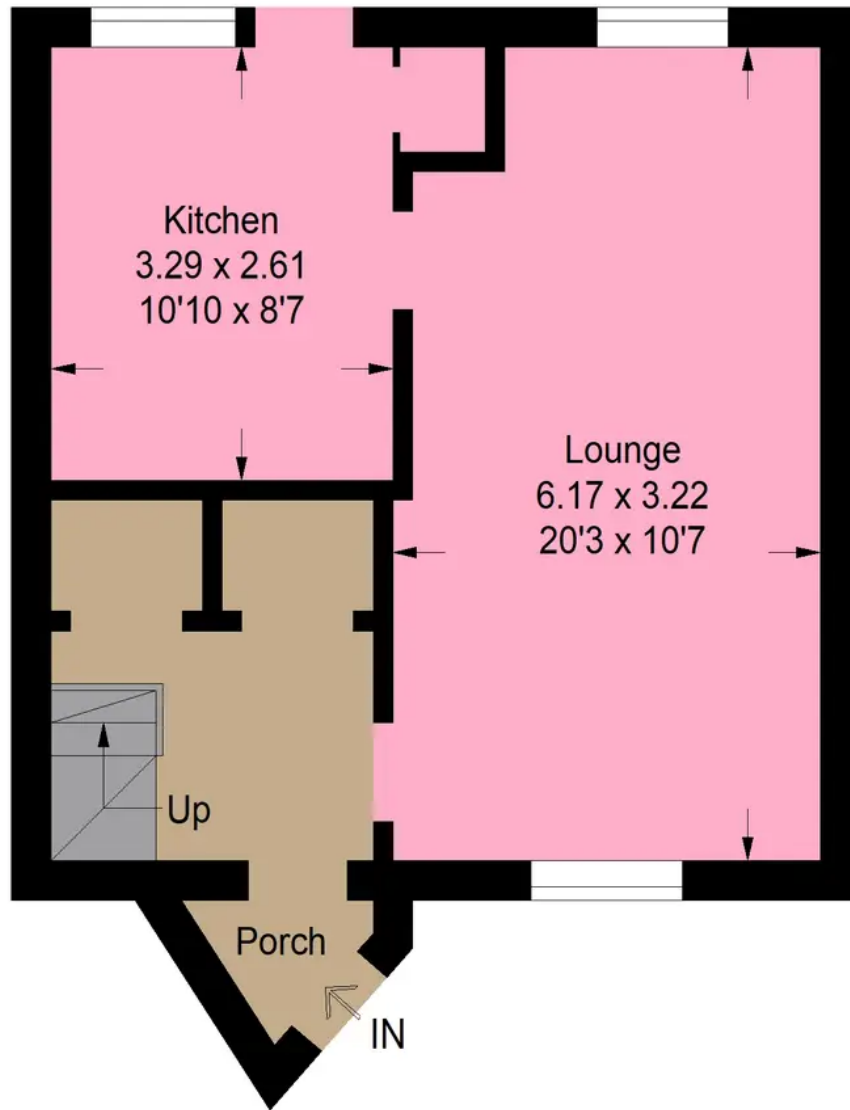
Additional features of this delightful home include a beautifully maintained south/east facing garden, benefiting from sunlight throughout the day, a double driveway providing ample off-street parking, and an attached garage offering extra storage and parking space.

Situated within a quiet and picturesque residential development, this home provides the perfect setting for family life.

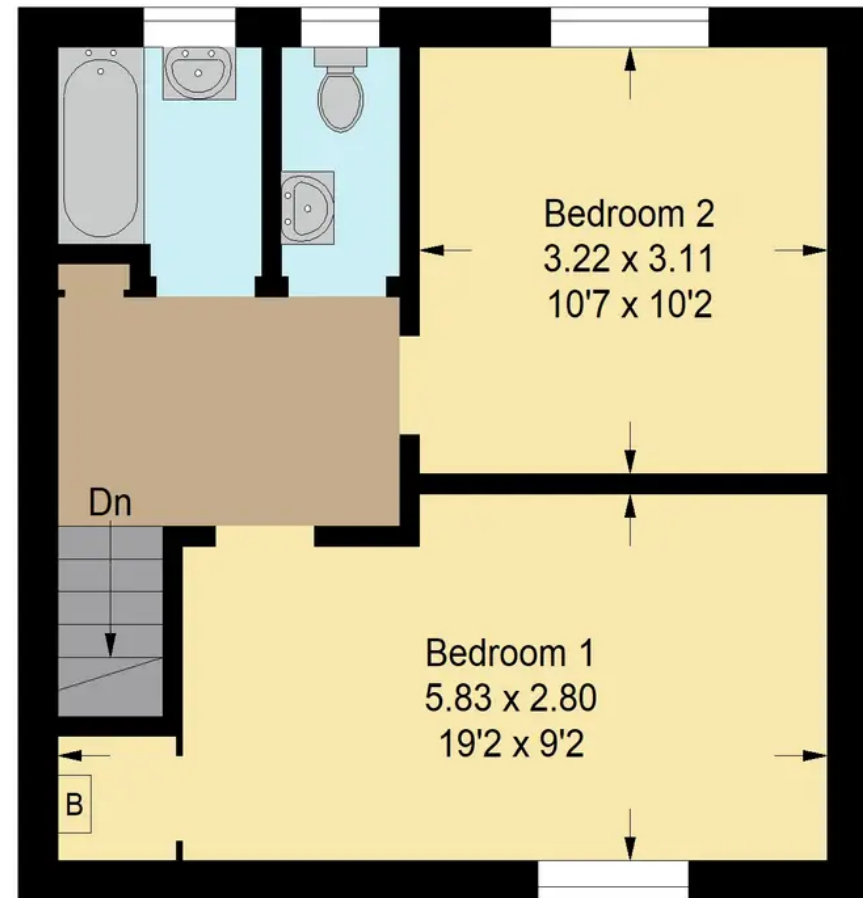




Approximate Gross Internal Area = 73.9 sq m / 795 sq ft



Ground Floor



First Floor

Illustration For Identification Purposes Only. Not To Scale (ID1105474 / Ref:88686)



Bridges Properties

94 West Main Street, Whitburn - EH47 0QU

01501519435

info@bridges-properties.co.uk

www.bridges-properties.co.uk/

