



63 South Park, Armadale

Bathgate

Offers Over **£105,000**



63 South Park

Armadale, Bathgate

This charming two-bedroom property offers a well-designed layout ideal for comfortable living. Upon entering through the porch, you are welcomed into a cosy entrance hall leading to a spacious lounge area, perfect for relaxation and entertaining guests. Adjacent to the lounge is a well-appointed kitchen, offering ample space for culinary activities and storage.



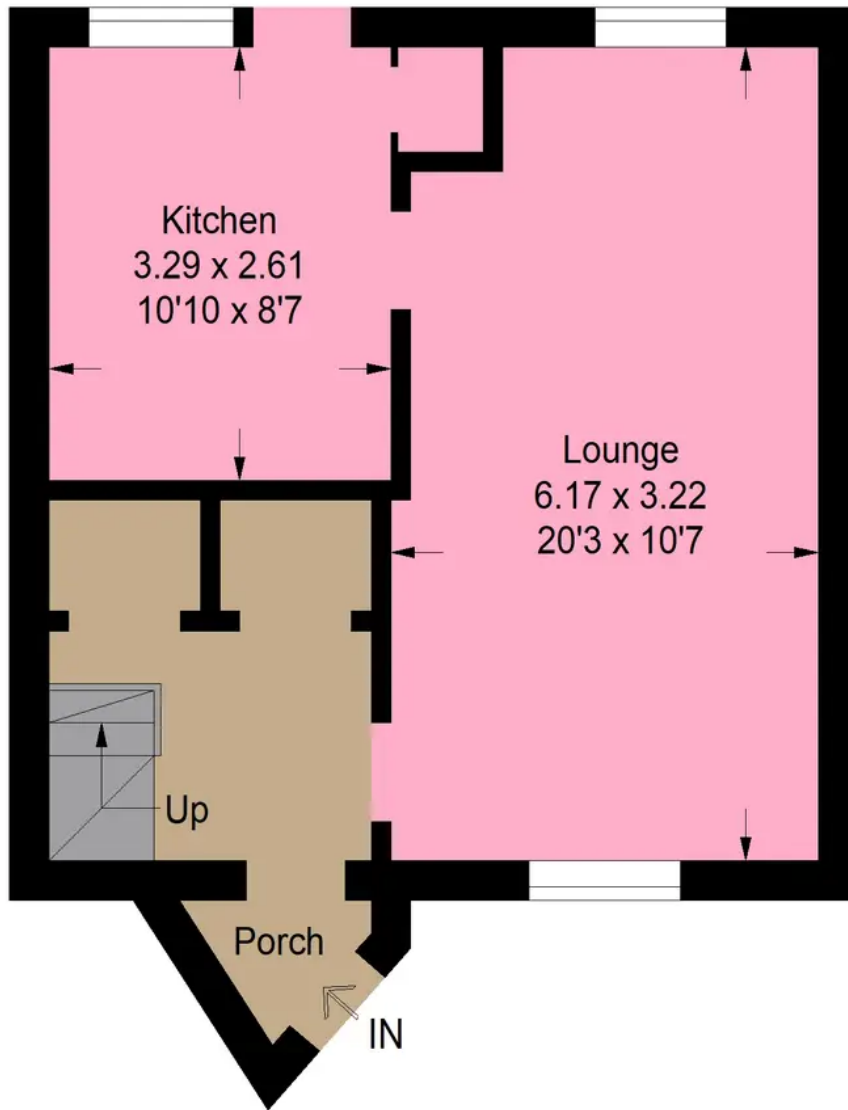
Ascending the staircase, the first floor features two generously sized bedrooms. The master bedroom is particularly large, providing a peaceful retreat with plenty of natural light. The second bedroom, also spacious, is perfect for family members or guests. The first floor is completed by a modern bathroom and a separate WC, ensuring convenience and privacy.

With its thoughtful layout and inviting atmosphere, this property is perfect for individuals or small families seeking a comfortable and stylish home.

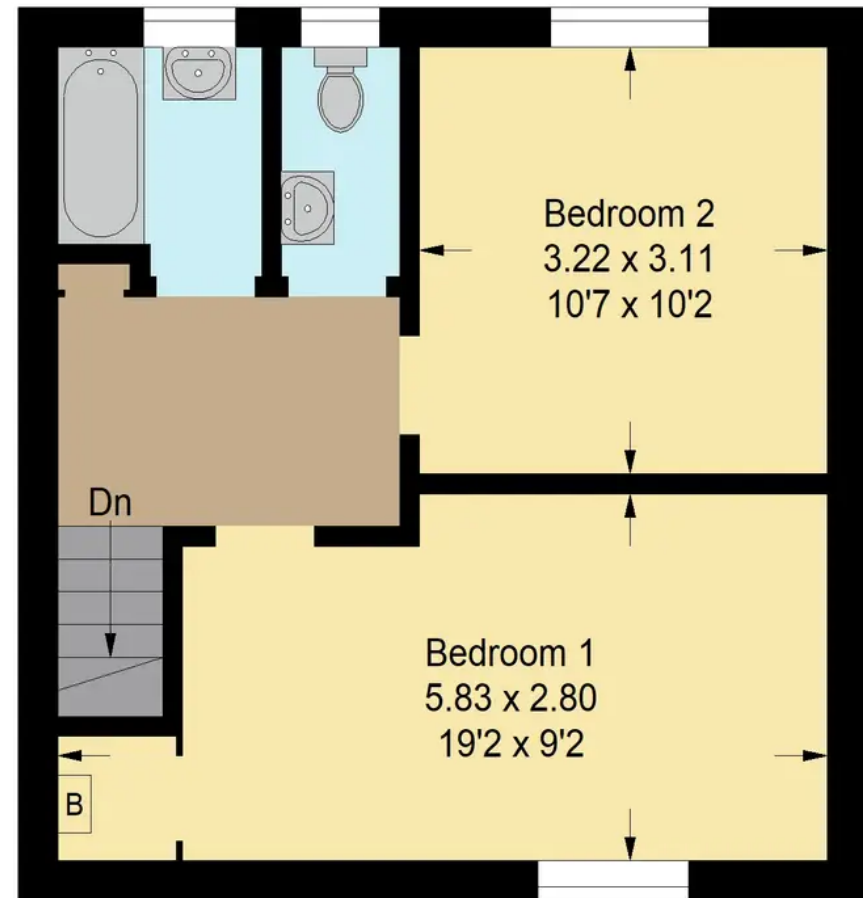




Approximate Gross Internal Area = 73.9 sq m / 795 sq ft



Ground Floor



First Floor

Illustration For Identification Purposes Only. Not To Scale (ID1105474 / Ref:88686)



Bridges Properties

94 West Main Street, Whitburn - EH47 0QU

01501519435

info@bridges-properties.co.uk

www.bridges-properties.co.uk/

