

S&B



1 Bedroom Luxury Apartment Queenshurst Square, Kingston Upon Thames. £500,000 Leasehold

Built just 5 years ago by Berkeley Homes, a spectacular larger than average, 1 double bedroom contemporary apartment boasting 678 sq ft of internal living space.

This luxury apartment offers spacious open plan living with a 31.2ft x 13.5ft reception/kitchen/dining room with double aspect views and a door opening to the private terrace.

The double bedroom offers views over the terrace and triple fitted wardrobes.

Elegant and spacious luxury bathroom & Hallway storage cupboard.

This executive apartment is situated within the Queenshurst Square development with 24hr Concierge Service, Landscaped Internal Courtyard Garden with water features,

Residents Health Suite, Cinema Room and Meeting Room.

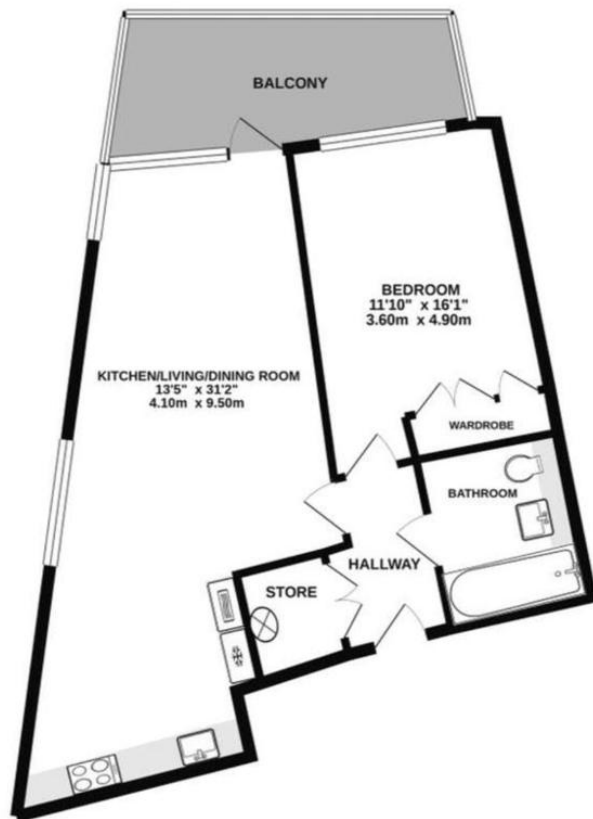
Queenshurst square is located in central Kingston close to the River Thames, the Historic Town Centre, Fantastic Transport Links including frequent trains to London Waterloo.

WWW.STACKANDBONNER.COM

020 8974 8844

sales@stackandbonner.com





FLOOR AREA 678 SQ FT

Whilst every attempt has been made to ensure the accuracy of the floor plan contained here, measurements of doors, windows, rooms and any other items are approximate and no responsibility is taken for any error, omission, or mis-statement. This plan is for illustrative purposes only and should be used as such by any prospective purchaser. The services, systems and appliances shown have not been tested and no guarantee as to their operability or efficiency can be given

- 1 Double Bedroom Luxury Apartment
- 678 sq ft
- 4th Floor
- 31.2ft x 13.5ft reception/kitchen/dining room
- Double Bedroom with Triple Wardrobes
- Elegant and spacious luxury bathroom
- Private Terrace
- 24hr Concierge
- Landscaped Internal Courtyard Garden with water features
- Residents Health Suite, Cinema Room and Meeting Room
- Service Charge: £3,605.74 per annum
- Ground Rent £350 per annum
- Lease: 994 years remaining
- Council Tax: Band D - £2,374.32 per annum