



One Tree Road, Trumpington

+44 (0) 1223 508050

lettings@cookecurtis.co.uk

www.cookecurtis.co.uk

A fully furnished, five bedroom ex show home located in the highly sought after village of Trumpington. Close to Trumpington Meadows nature reserve, Addenbrookes Hospital and the park and ride for Cambridge City centre.

£4,000 pcm

One Tree Road, Cambridge,
CB2 9BT



A fully furnished, detached, high specification ex show home with five bedrooms, four bathrooms and two reception rooms. Located in the popular area of Trumpington, this family home is within close proximity to local amenities such as supermarkets, Trumpington park and ride, pubs and local schooling.

The property internally comprises of entrance hall with the modern kitchen to the right. The kitchen has integrated appliances, plenty of worktop and cupboard space, plus breakfast bar. The kitchen also has a lovely dining area with doors leading to the rear garden, plus access to the utility room. Also on the ground floor is the spacious living room and separate sitting room, plus downstairs W.C.



The first floor houses the stunning master bedroom with a large en-suite shower room, built in wardrobes and an attached sitting room / study. There is an additional large bedroom with en-suite, plus another bedroom and family bathroom. On the top floor, there are a further two double bedrooms and a shower room.

Externally, the property has a fully enclosed garden, double garage and driveway parking.





244 sqm / 2626 sqft

5 bed, 4 bath, 2 recep

Council tax band - G

EPC - B / 89

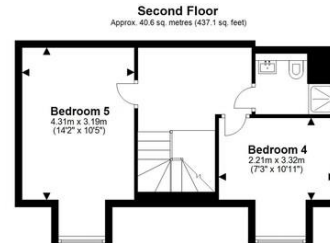
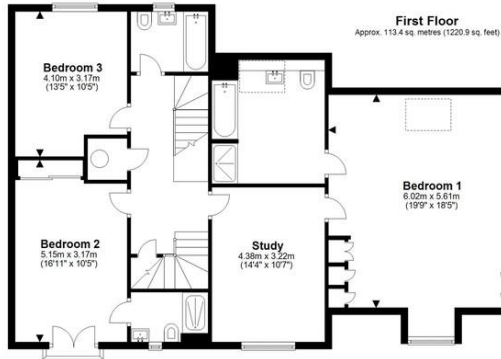
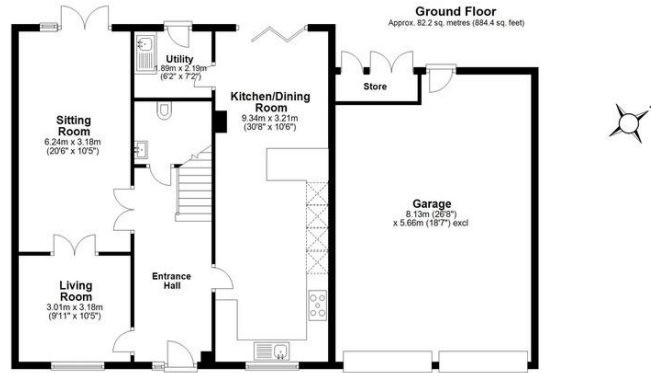
Gas central heating

Double garage

Furnished

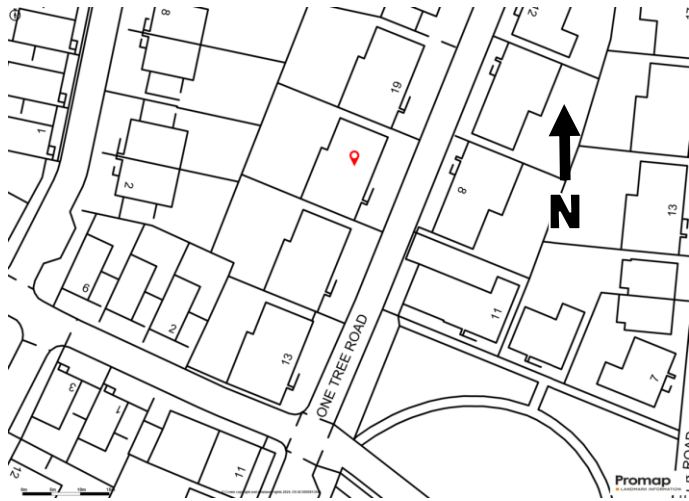
Available September 2024





Total area: approx. 236.2 sq. metres (2542.4 sq. feet)

Drawings are for guidance only. www.beachenergy.co.uk - IPMS 2
Plan produced using Planip.



Trumpington is a thriving, fast-growing part of the city that retains its village identity and community spirit. Exceptionally well-located, it offers easy access to the Addenbrooke's campus, the M11, and the city centre via car, bus, guided bus, bicycle on purpose-built cycle routes, or an enthusiastic walk. The city's mainline station is easily reachable along the guided busway cycleway, avoiding car traffic. The area boasts three primary schools and a state-of-the-art secondary school, opened in 2016, with excellent sporting facilities, including a private members' gym. Several private schools are within cycling distance. Local amenities include various restaurants, pubs, shops, a post office, hairdresser, surgery, pharmacy, library, Waitrose supermarket, and two new country parks.

COOKE
CURTIS
& CO