





Apostle Cottage Fanshawe Lane

Henbury, Macclesfield

Council Tax band: G

Tenure: Freehold

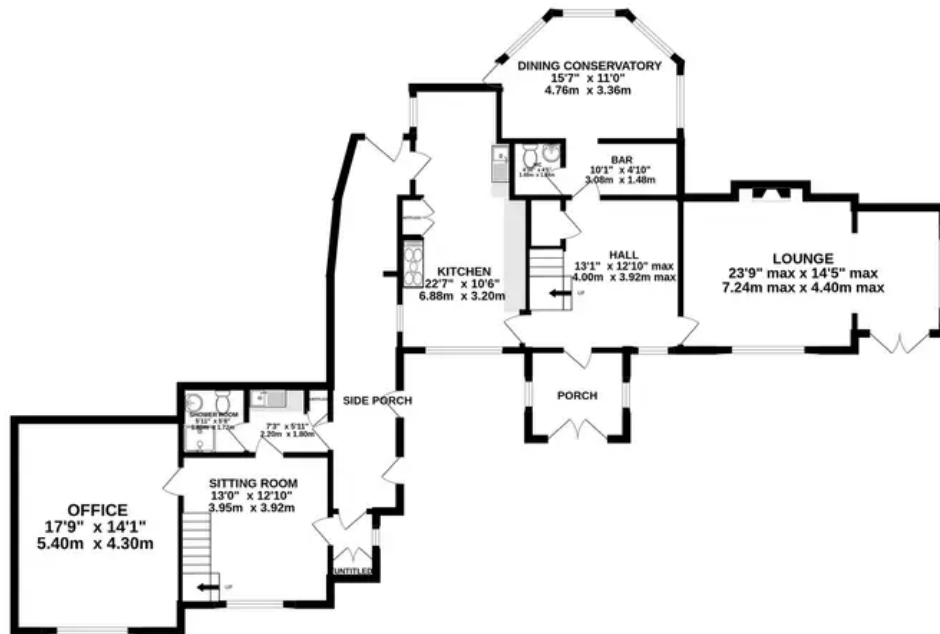
EPC Energy Efficiency Rating: G

EPC Environmental Impact Rating:

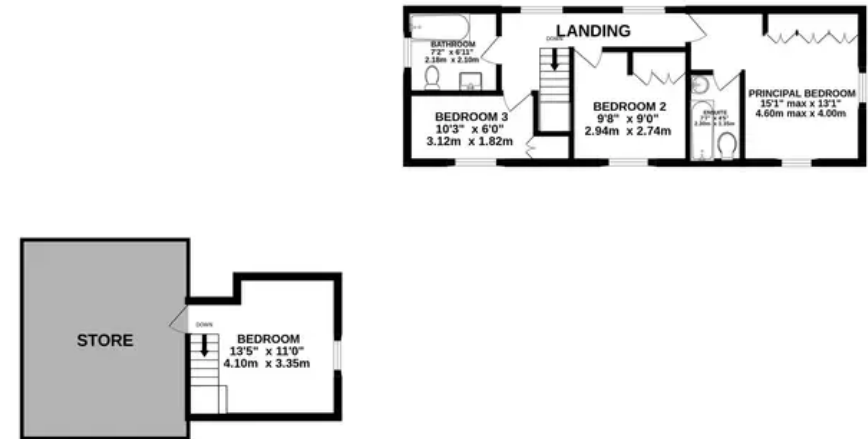
- Pretty detached cottage in wonderful rural location
- Cosy accommodation, tastefully presented throughout
- Excellent attached annex ideal for dependent relative/ teenager or for use as a home office
- Beautiful gardens providing a wonderful, private setting for the cottage
- Excellent location within convenient reach of Macclesfield, Alderley Edge and Congleton



GROUND FLOOR
1674 sq.ft. (155.6 sq.m.) approx.



1ST FLOOR
660 sq.ft. (61.3 sq.m.) approx.



TOTAL FLOOR AREA : 2334 sq.ft. (216.8 sq.m.) approx.

Whilst every attempt has been made to ensure the accuracy of the floorplan contained here, measurements of doors, windows, rooms and any other items are approximate and no responsibility is taken for any error, omission or mis-statement. This plan is for illustrative purposes only and should be used as such by any prospective purchaser. The services, systems and appliances shown have not been tested and no guarantee as to their operability or efficiency can be given.

Made with Metropix ©2024



Stuart Rushton & Company

Stuart Rushton & Co, 35 King Street – WA16 6DW

01565 757000

enquiries@srushton.co.uk

www.srushton.co.uk



**Stuart
Rushton**
& COMPANY

We are not authorised to make or give any representations or warranties in relation to the property either here or elsewhere. We assume no responsibility for any statement that may be made in these particulars, and they do not form part of any offer or contract and must not be relied upon as statements or representation of fact. Any areas, measurements or distances are approximate. The text, photographs and plans are for guidance only. Importantly, it should not be assumed that the property has all necessary planning, building regulations or other consents and we have not tested any services, equipment or facilities. Purchasers must satisfy themselves by inspection or otherwise.