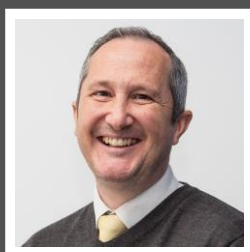


Love Homes



Kings Road, Flitwick, Bedfordshire MK45 1EL

Entering through a custom-made solid oak door, you find a welcoming entrance hall. The heart of the home is the 30'2" open-plan living/kitchen area with bi-fold doors offering views of the 120ft south-facing garden. The "Leicht" kitchen features Siemens appliances, a breakfast bar island with induction hob, downdraft extractor, and instant boiling hot tap. The ground floor also includes a spacious utility room. The main bedroom fits a super king bed, has fitted wardrobes, and an en-suite shower room. Three double bedrooms, a single bedroom, and a modern family bathroom with a shower cubicle complete the first floor. The 120ft garden is an oasis with lawns, mature flower beds, and shrubs.



This property is presented by Duncan Stead - a Love Homes property expert with over 25 years' experience.

Find out more about this property by scanning the QR code.



0.3m

Tenure: Freehold



4



3

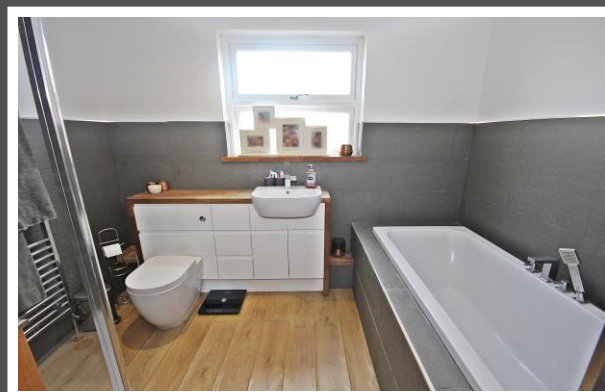


3

Council Tax: F



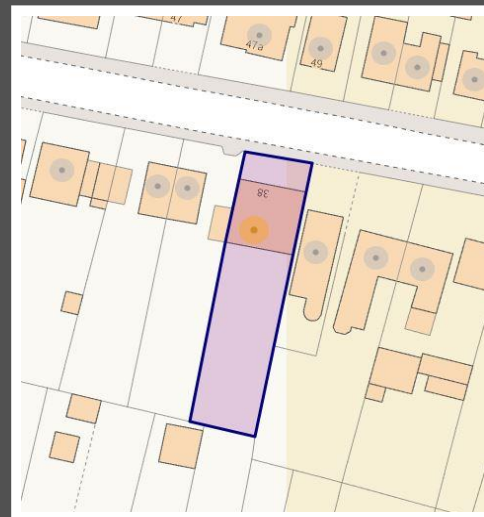
"Our home has been a fantastic place to raise our three children. Its location means that we can get all three of them into school with such ease on foot or by car and still make it into work in London within an hour via the train station at the top of the road. The local education provision is highly inclusive and has offered each of our girls the best start in their education. The house itself has been an excellent base to entertain from, especially the garden and open plan family space where we have enjoyed so much of our time here. We have spent a lot of time and resource upgrading the home we bought 9 years ago into the home we have today. Each decision held quality but also experience in mind, maximizing opportunity to spend comfortable and important time with family and friends. This house has been such a blessing to our family and we can't wait to see who will enjoy it next."





TOTAL FLOOR AREA : 2246 sq.ft. (208.6 sq.m.) approx.
 Drawn by Love Homes for illustrative purposes only. Measurements and areas shown are approximate.
 Made with Metroplex ©2024

Score	Energy rating	Current	Potential
92+	A		
81-91	B		82 B
69-80	C		
55-68	D	62 D	
39-54	E		
21-38	F		
1-20	G		



These particulars are set out as a general outline in accordance with the Property Misdescriptions Act (1991) only for the guidance of intending purchasers or lessees, and do not constitute any part of an offer or contract. Details are given without any responsibility, and any intending purchasers, lessees or third parties should not rely on them as statements or representations of fact but must satisfy themselves by inspection or otherwise as to the correctness of each of them. We have not carried out a structural survey and the services, appliances and specific fittings have not been tested. All photographs, measurements, floor plans and distances referred to are given as a guide only and should not be relied upon for the purchase of carpets or any other fixtures or fittings. Gardens, roof terraces, balconies and communal gardens as well as tenure and lease details cannot have their accuracy guaranteed for intending purchasers. Lease details, service ground rent (where applicable) are given as a guide only and should be checked and confirmed by your solicitor prior to exchange of contracts. No person in the employment of Love Homes has any authority to make any representation or warranty whatever in relation to this property. Purchase prices, rents or other prices quoted are correct at the date of publication and, unless otherwise stated, are exclusive of VAT. We retain the copyright in all advertising material used to market this Property. All information is as advised by the seller and subject to change. Council tax bands can be subject to change by the local council.

5 The Russell Centre, Coniston Road, Flitwick, MK45 1QY
 Tel: 01525 713111

Email: flitwick@lovehomes.uk

www.lovehomes.uk



Love Homes