

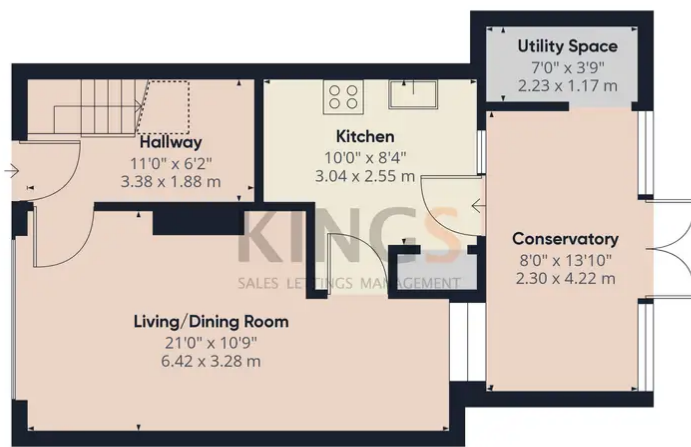


Oak Grove, Hatfield

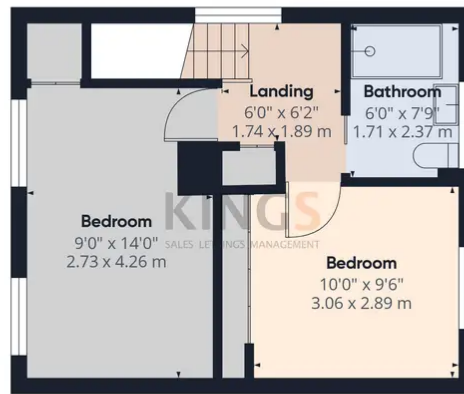
£275,000 Freehold

END OF TERRACE HOUSE • TWO DOUBLE BEDROOMS • DOUBLE GLAZING • GAS CENTRAL HEATING • POTENTIAL TO EXTEND (STPP) • REQUIRING MODERNISATION • WALKING DISTANCE TO TOWN CENTRE • CHAIN FREE • FREEHOLD • EPC RATING - TBC

KINGS
SALES LETTINGS MANAGEMENT



Ground Floor



Floor 1

Approximate total area

833.13 ft²
77.4 m²

Reduced headroom

13.45 ft²
1.25 m²

(1) Excluding balconies and terraces

Reduced headroom
(below 1.5m/4.92ft)

While every attempt has been made to ensure accuracy, all measurements are approximate, not to scale. This floor plan is for illustrative purposes only.

GIRAFFE360

