



Kirkby Lonsdale

£325,000

16 Mitchelgate, Kirkby Lonsdale, Carnforth, LA6 2BE

A charming stone and slate built cottage, set within the centre of the thriving market town of Kirkby Lonsdale and enjoying an array of period features, including beams, exposed stone and wooden latch doors to name a few, blending effortlessly with modern day comforts and design.

Being arranged over three floors, the accommodation comprises an open plan kitchen/living/dining room with two double bedrooms and a stylish bathroom, creating an ideal lock up and leave or investment opportunity for those seeking a home within this popular market town. Kirkby Lonsdale itself offers a range of boutique shops, impressive selection of bars, restaurants and pubs, all within ten minutes of the M6 J36 and with excellent access to the Lake District National Park and the Yorkshire Dales National Park, its an ideal base for those who enjoy all kinds of outdoor activities whilst also enjoying the practicalities of living in a small town location.



2



1



1



E



Superfast
Broadband*



Permit Parking
Available

Quick Overview

Grade II Listed Cottage

Two Bedrooms & One Bathroom

Central Location in the Popular Market Town
Of Kirkby Lonsdale

Open Plan Kitchen/Living/Dining Area

Modern Fitted Bathroom

Period Features Throughout

Contemporary Design

Ideal Investment or Lock Up & Leave

Permit Parking Available

Superfast 30-300Mbps Broadband Available

Property Reference: KL3542



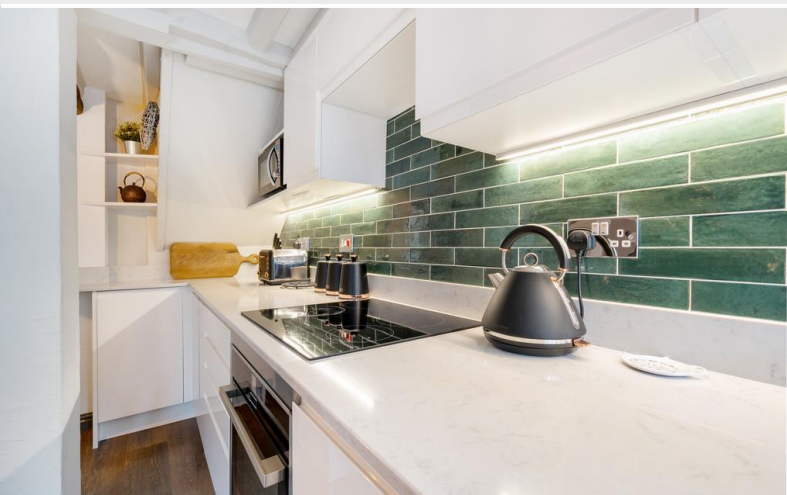
Open Plan Kitchen/Living/Dining Room



Open Plan Kitchen/Living/Dining Room



Open Plan Kitchen/Living/Dining Room



Open Plan Kitchen/Living/Dining Room

Property Overview

Welcome to 16 Mitchelgate, a truly charming and contemporary cottage. Arranged over three floors with a wealth of period features throughout, blending seamlessly with contemporary design and modern finishes to create that cosy cottage feel.

Step through the door into the open plan living/kitchen/dining room, setting the tone for this home with beams and exposed stone, filled with light from the dual aspect windows and boasting a feature wood burning stove and inset fireplace for those cooler evenings. Wooden floor leads throughout, with space for a small dining table and stairs leading to the first floor.

The modern fitted kitchen comprises wall and base units with complementary work tops, tiled splash back and a stainless steel sink whilst integrated appliances include a fridge; Logik four ring hob with extractor over and a Neff oven.

Follow the stairs to the first floor where you will find bedroom two; a wonderful double room with dual aspect windows to the front and rear, enjoying ample space for additional furniture with feature beams enhancing the character feel. The contemporary three piece bathroom is also found on this level, an attractive suite comprising a vanity sink unit, W.C. and walk in shower with waterfall shower and hand held attachment, and a heated ladder towel radiator to finish.

Finally, ascend to the second floor where you will find bedroom one; an attractive double room with vaulted ceiling and velux window, with ample space for additional furniture and a handy integrated cupboard for storage.

Accommodation (with approximate dimensions)

Ground Floor

Open Plan Kitchen/Living/Dining Room 15' 2" x 13' 4"
(4.62m x 4.06m)

First Floor

Bedroom Two 15' 5" x 9' 7" (4.7m x 2.92m)

Second Floor

Bedroom One 15' 7" x 11' 8" (4.75m x 3.56m)

Services

Mains gas, water, drainage and electricity.

Council Tax

Westmorland and Furness Council. Band B.

Tenure

Freehold. Vacant possession upon completion.

Viewings

Strictly by appointment with Hackney & Leigh Kirkby Office.

Parking

Permit parking available via Westmorland and Furness council. For more information, please visit <https://www.westmorlandandfurness.gov.uk/parking-streets-and-transport/parking/apply-parking-permit>

What3Words Location & Directions

///cuts.discussed.mixer

From Market Square, walk up New Road, pass the Post Office and Institute and turn right onto Bective Road. At the end turn right onto Mitchelgate and No. 16 is part way down on the right.



Bedroom Two



Bedroom Two



Bedroom One

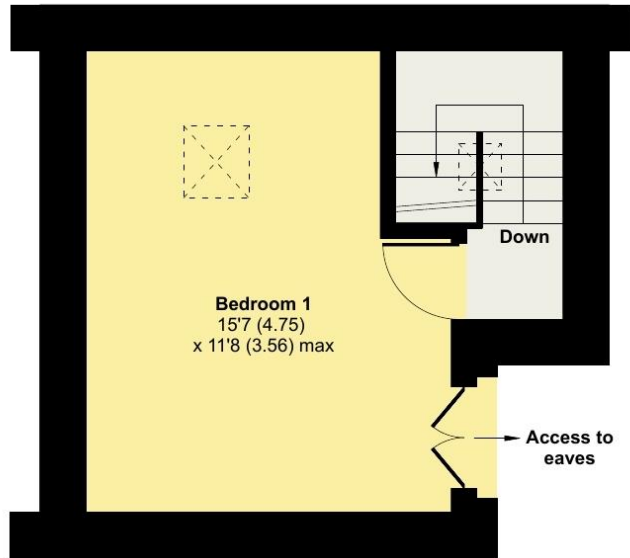


Shower Room

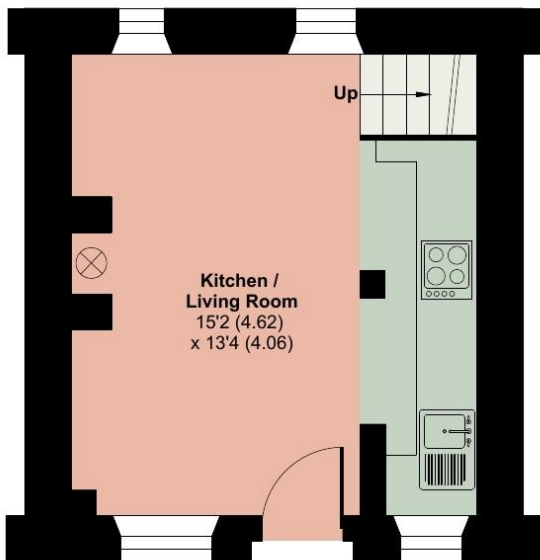
Mitchelgate, Kirkby Lonsdale, Carnforth, LA6

Approximate Area = 654 sq ft / 60.7 sq m

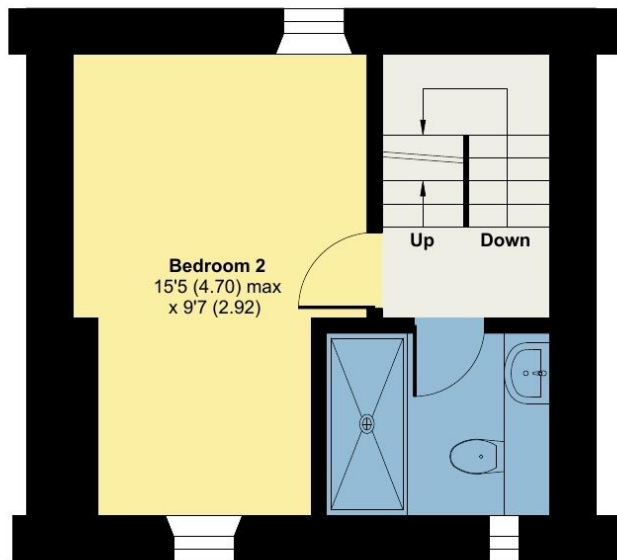
For identification only - Not to scale



SECOND FLOOR



GROUND FLOOR



FIRST FLOOR



Floor plan produced in accordance with RICS Property Measurement Standards incorporating International Property Measurement Standards (IPMS2 Residential). © nichecom 2024. Produced for Hackney & Leigh. REF: 1161187

All permits to view and particulars are issued on the understanding that negotiations are conducted through the agency of Messrs. Hackney & Leigh Ltd. Properties for sale by private treaty are offered subject to contract. No responsibility can be accepted for any loss or expense incurred in viewing or in the event of a property being sold, let, or withdrawn. Please contact us to confirm availability prior to travel. These particulars have been prepared for the guidance of intending buyers. No guarantee of their accuracy is given, nor do they form part of a contract. *Broadband speeds estimated and checked by <https://checker.ofcom.org.uk/en-gb/broadband-coverage> on 18/07/2024.