

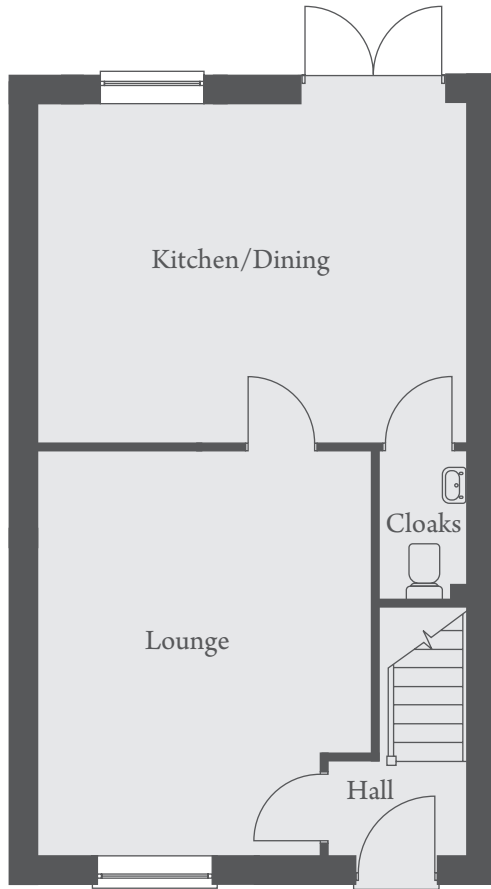
THE PRESTWICH

FOUR BEDROOM HOME



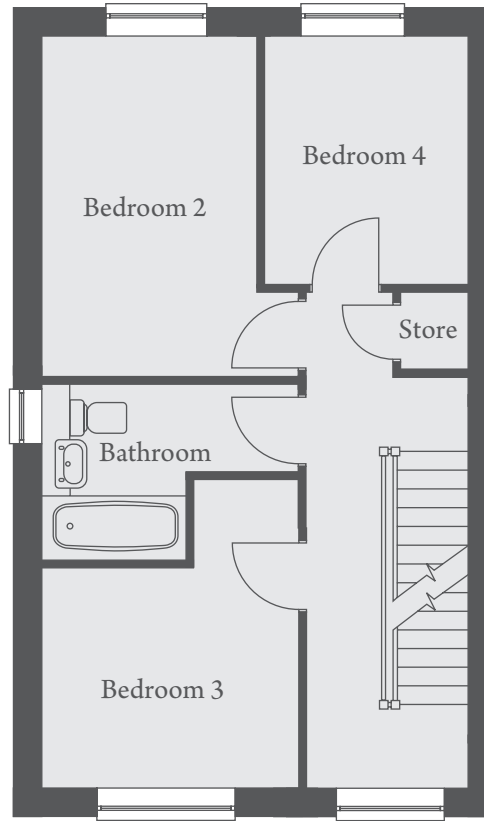
THE PRESTWICH

FOUR BEDROOM HOME



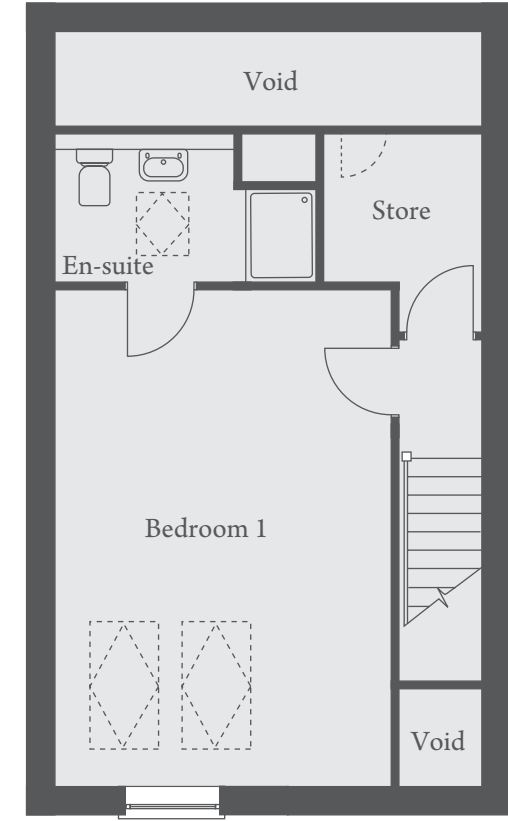
GROUND FLOOR

Kitchen/Dining.... 5174 x 4113mm 17'0" x 13'6"
 Lounge 4040 x 4883mm 13'3" x 16'0"



FIRST FLOOR

Bedroom 2.....2637 x 4103mm 8'8" x 13'6"
 Bedroom 3.....3041 x 2714mm 10'0" x 8'11"
 Bedroom 4.....2473 x 3002mm 8'1" x 9'10"



SECOND FLOOR

Bedroom 1.....4065 x 5887mm 13'4" x 19'3"

Landscaping and configuration may vary from plot to plot. Please refer to Sales Consultant for further details. All dimensions are approximate and should not be used for carpet sizes, appliance spaces, or furniture. We operate a policy of continuous improvement and individual features such as kitchen and bathroom layouts, doors, windows, garages and elevational treatments may vary from time to time. Consequently these particulars should be treated as general guidance only and do not constitute a contract, part of a contract or a warranty.