



Hangleton Valley Drive, Hove, BN3 8AP
Offers In Excess Of £525,000

Hangleton Valley Drive, Hove, BN3 8AP

Charming Two Bedroom Detached Bungalow with Private Driveway & Garage in Hangleton Valley Drive, Hove.

A delightful detached bungalow located in the sought-after Hangleton Valley Drive, Hove.

This property is ideal for those looking for a peaceful and serene abode, offering a perfect blend of tranquillity and convenience.

As you approach the bungalow, you are greeted by a private driveway that leads you to the garage. Never worry about finding parking space again - this home has it covered! The charming exterior of the bungalow exudes a warm and welcoming vibe, setting the tone for what awaits inside.

Upon entering, you are immediately struck by the bright and airy atmosphere that fills the living spaces. The reception room is spacious and versatile, offering ample space for relaxing or entertaining.

Natural light floods through the large sliding patio door, creating an inviting ambiance throughout. The kitchen boasts ample storage space, and a cosy dining area. Prepare delicious meals with ease and enjoy them surrounded by the lush greenery outside.

The kitchen also provides access to the desirable west-facing rear garden through the conservatory, perfect for outdoor gatherings, relaxation, or gardening enthusiasts.

The property features two well-appointed bedrooms, offering comfortable and restful spaces with built in storage, and the bathroom features a bathtub with shower over for your convenience.

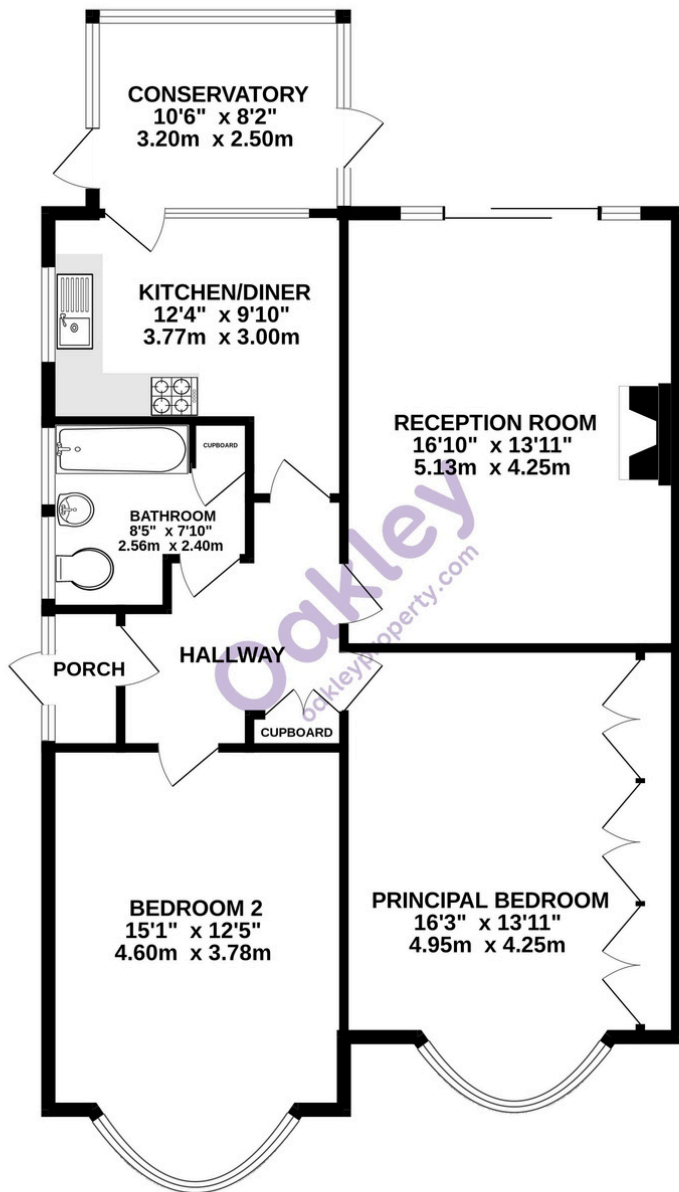
Hangleton Valley Drive is a highly sought-after area, known for its picturesque surroundings and relaxed atmosphere. The convenience of amenities, such as schools, shops, and transportation links, are all within easy reach, making this location perfect for families and professionals alike.

The sellers are motivated and ready to move, making this an excellent opportunity to secure your dream bungalow in Hove.

Do not miss out on this rare gem that offers both character and modern convenience in a coveted location.



GROUND FLOOR



TOTAL FLOOR AREA : 990sq.ft. (92.0 sq.m.) approx.
Made with Metropix ©2024



Please note:
These details have been produced in good faith and are believed to be accurate based upon the information supplied but they are not intended to form part of a contract. All statements contained in these particulars as to this property are made without responsibility on the part of Oakley, the vendors or lessors and are NOT to be relied on as statements or representations of fact. Any intending purchasers must satisfy themselves by inspection or otherwise as to the correctness of each of the statements contained in these particulars. The vendors, Oakley and any person who work in their employment do not have any authority to make or give any representation or warranty. The floor plan is for illustrative purposes only and the accuracy cannot be relied upon or guaranteed and no responsibility is taken for an error, omission or mis-statement. The total floor area shown has been taken from the EPC.



Oakley

Your Sussex Property Expert

Brighton & Hove Office
01273 688 881
3-6 North Road, Brighton BN1 1YA
www.oakleyproperty.com
brighton@oakleyproperty.com

We also have offices in:
Shoreham by Sea
Lewes Town & Country
The London Office



A new way of marketing property

Get in touch to book a viewing or valuation of your own property

Energy Performance Certificate

