

Wythburn Street

Salford



Offers in Region of £195,000

# Wythburn Street

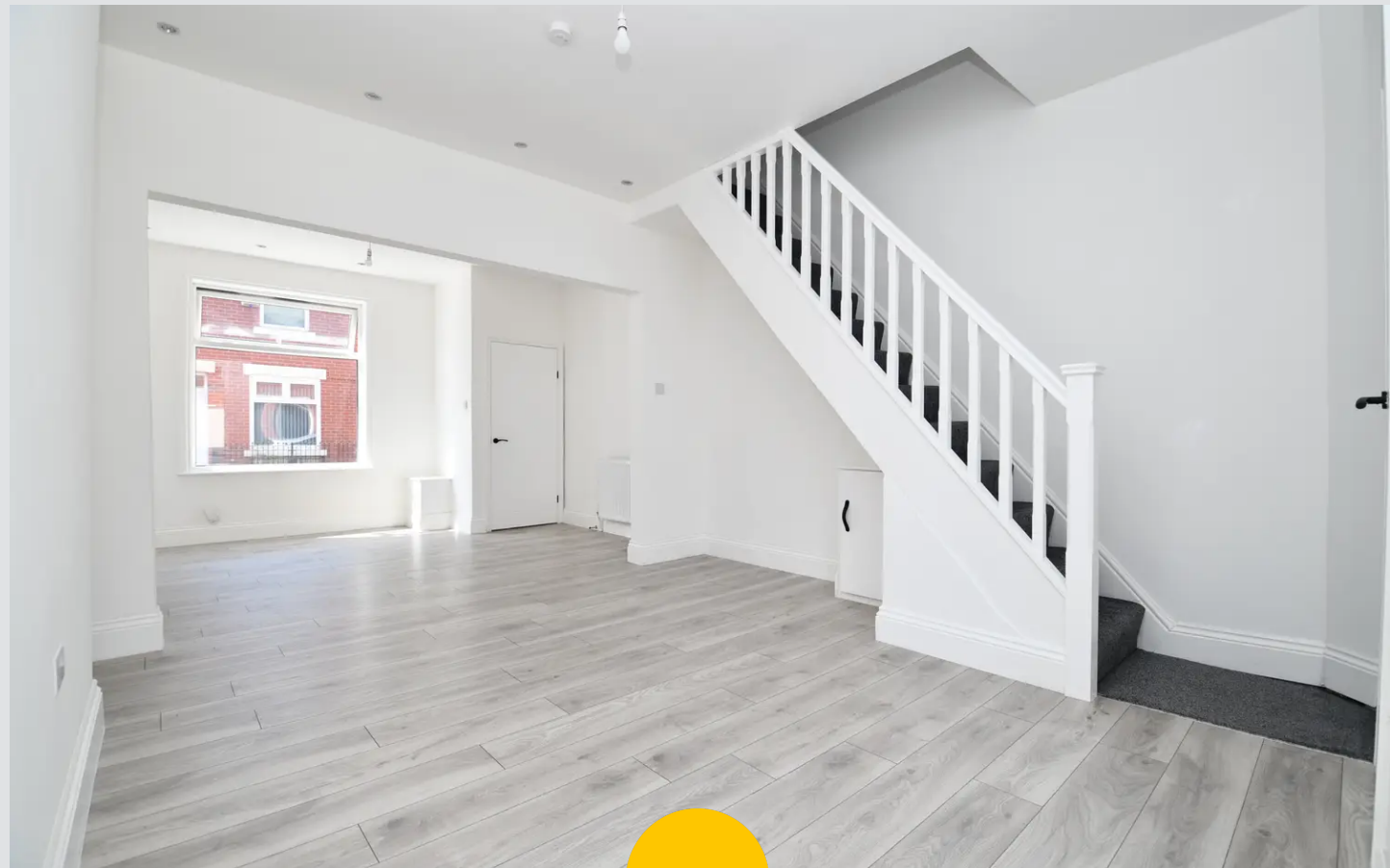
Salford

STOP! Are you looking for a property you can pack your bags and move into? LOOK NO FURTHER! This recently renovated, two bedroom terraced property could be the one for you!

Council Tax band: A

Tenure: Freehold

- Stylish Two Bedroom Terraced Property
- Recently Renovated to a High Standard
- Benefits from a New Boiler and Radiators
- Bright Living and Dining Rooms Made Open Plan, Only Separated via an Archway
- Modern Fitted Kitchen
- Contemporary Three-Piece Shower Room
- Low-Maintenance Courtyard Garden to the Rear, with Silicone Rendered Walls
- Close to Buile Hill Park and Amenities
- Within Walking Distance of Langworthy Tram Stop, which Provides Direct Access into Salford Quays, Media City and Manchester City Centre
- Ideal First Time Home or Investment, Early Viewing is Essential!



### **Porch**

### **Lounge**

13' 5" x 11' 1" (4.09m x 3.38m)

Featuring ceiling spotlights, ceiling light point, double glazed window, wall - mounted radiator. Fitted with laminate flooring.

### **Dining Room**

14' 2" x 13' 5" (4.32m x 4.08m)

Featuring ceiling light point, spotlights, double glazed window and wall mounted radiator. Fitted with laminate flooring.

### **Kitchen**

9' 11" x 5' 7" (3.02m x 1.71m)

Featuring ceiling spotlights, double glazed window. Complete with fitted units including integrated hob and oven. Space for washer. Fitted with laminate flooring.

### **Landing**

Featuring two ceiling light points. Fitted with carpet flooring.

### **Bedroom One**

13' 5" x 11' 2" (4.09m x 3.41m)

Featuring ceiling light point, double glazed window, wall - mounted radiator. Fitted with carpet flooring.

### **Bedroom Two**

12' 9" x 7' 5" (3.88m x 2.26m)

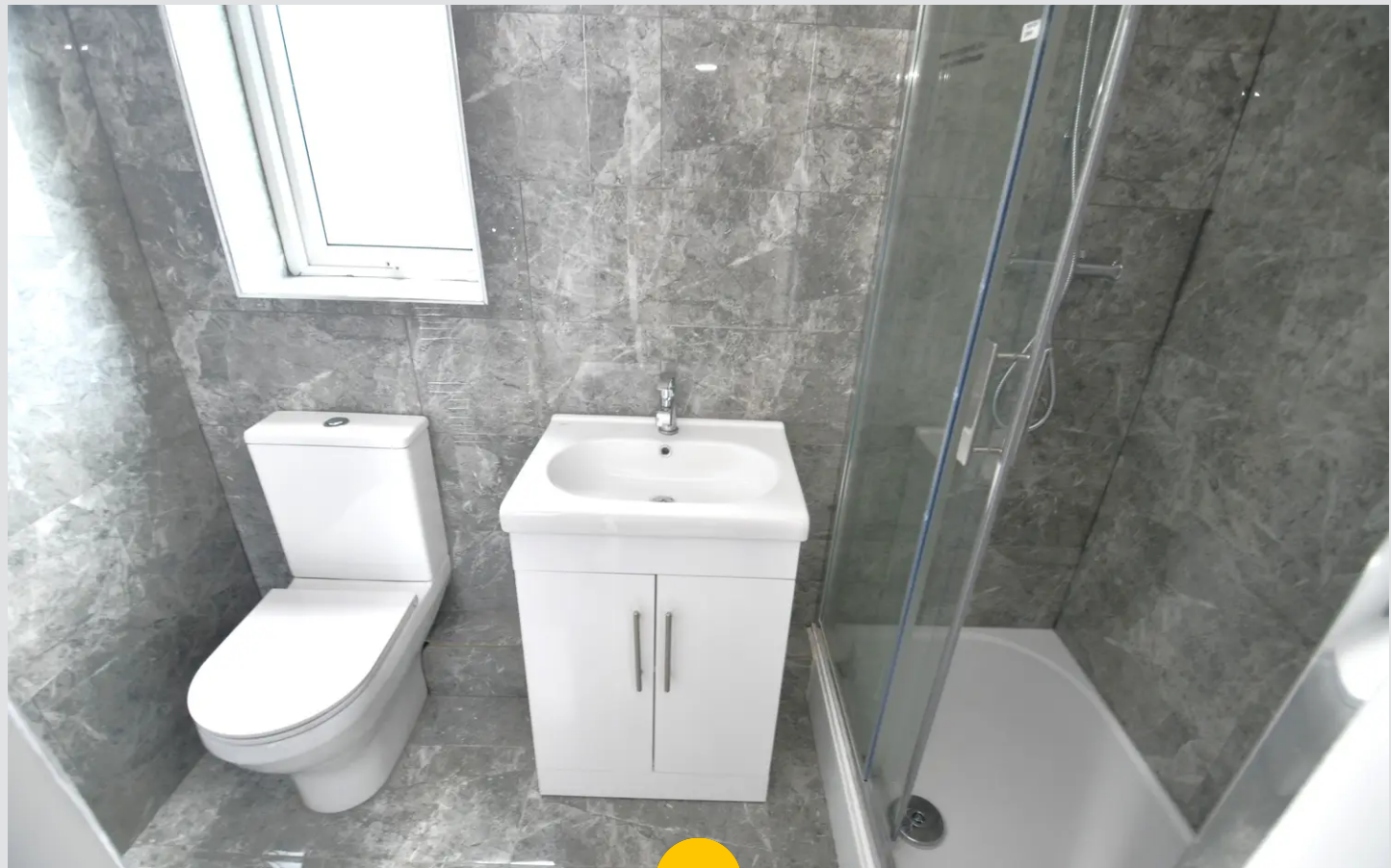
Featuring ceiling light point, double glazed window, wall - mounted radiator. Fitted with carpet flooring.

### **Shower room**

Featuring ceiling light point, double glazed window and heated towel rail. Complete with shower cubicle, hand wash basin and w/c. Fitted with partially tiled walls and tiled flooring.

### **External**

Complete with a low maintenance courtyard to the rear of the property.



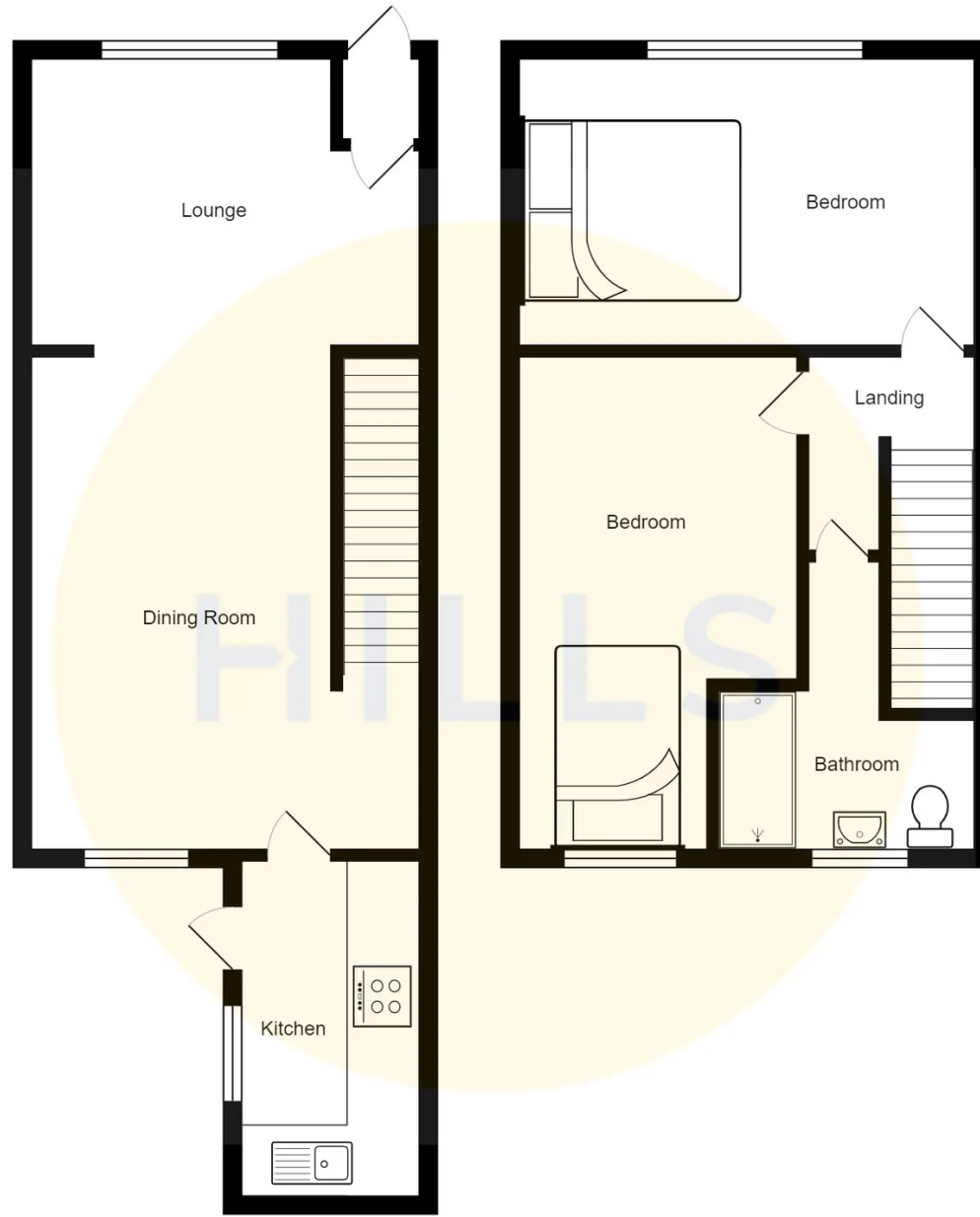
HILLS





HILLS







## Hills | Salfords Estate Agent

Hills Residential, Sentinel House Albert Street - M30 0SS

0161 707 4900

[sales@hills.agency](mailto:sales@hills.agency)

[www.hills.agency/](http://www.hills.agency/)



THE PROPERTY MISDESCRIPTIONS ACT 1991 The Agent has not tested any apparatus, equipment, fixtures and fittings or services and so cannot verify that they are in working order or fit for the purpose. A Buyer is advised to obtain verification from their Solicitor or Surveyor. References to the Tenure of a Property are based on information supplied by the Seller. The Agent has not had sight of the title documents. A Buyer is advised to obtain verification from their Solicitor. You are advised to check the availability of this property before travelling any distance to view. Every effort and precaution has been made to ensure these particulars are correct and not misleading but their accuracy is not guaranteed nor do they form part of any contract. If there is any point which is of particular importance to you, please contact us and we will provide any information you require. This is advisable, particularly if you intend to travel some distance to view the property. The mention of any appliances and services within these details does not imply that they are in full and efficient working order. These particulars are in draft form awaiting Vendors confirmation of their accuracy. These details must therefore be taken as a guide only.