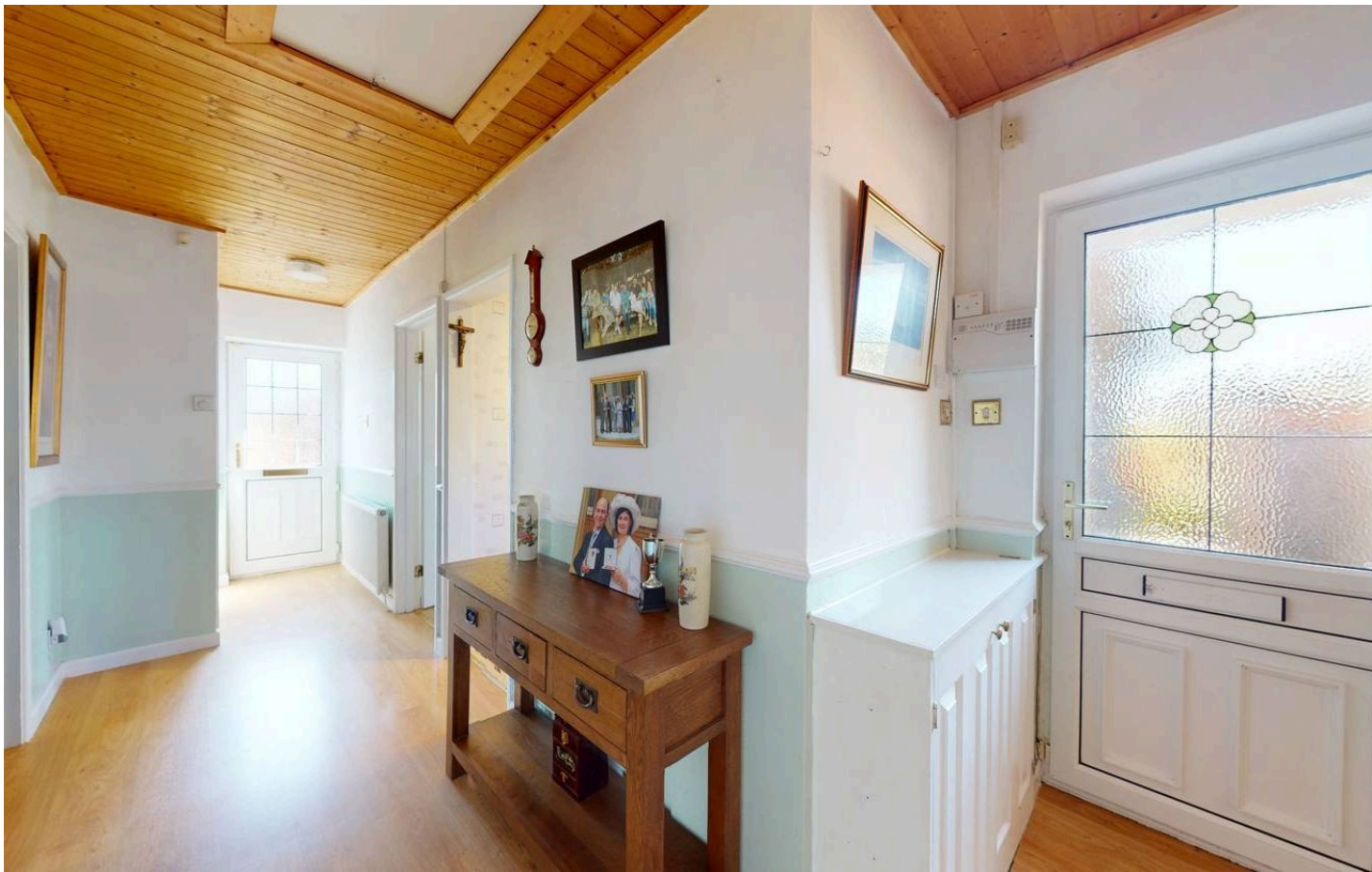




Davenham Close, Plymouth, PL6 6BT

£315,000 FREEHOLD EPC: D





Davenham Close

Plymouth, PL6 6BT

Immaculate 3-bed bungalow in sought-after Birdcage Farm. Architecturally designed with garage, large corner plot, balcony, and landscaped garden. Secluded yet convenient location. Contact us for a viewing!

Council Tax band: D

Tenure: Freehold

- Three Bedroom Detached Bungalow
- Birdcage Farm
- Cul-de-Sac
- Driveway & Garage
- Large Corner Plot
- Close to Amenities
- Lounge with Balcony
- Bathroom with Separate W/C
- Generous Kitchen

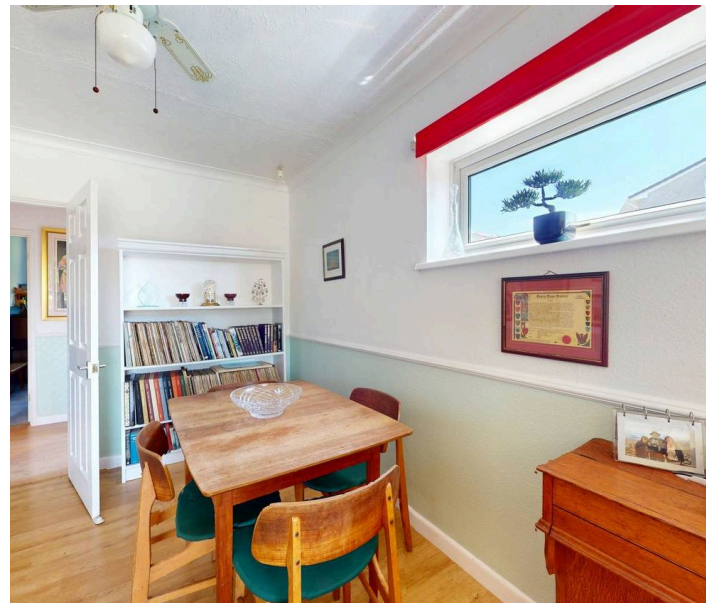


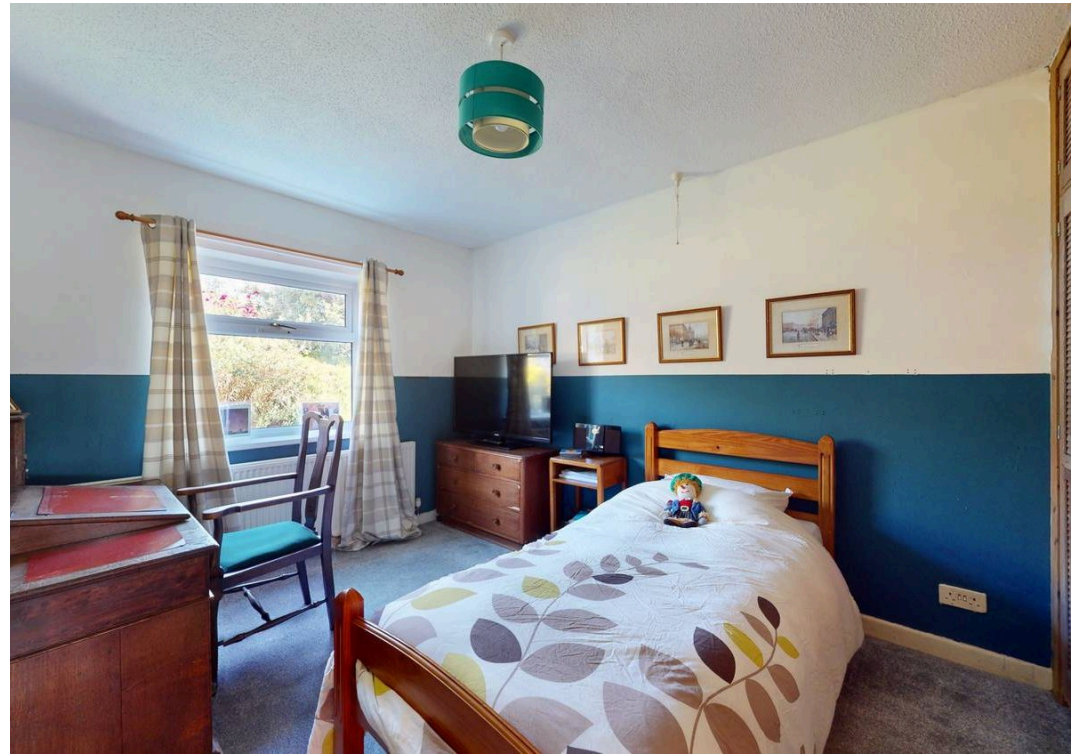
Davenham Close

Plymouth, PL6 6BT

Immaculate three-bedroom detached bungalow nestled within the sort after enclave of Birdcage Farm. Positioned at the start of a tranquil cul-de-sac, this architecturally designed residence offers an opulent lifestyle with it's meticulous attention to detail. The property boasts a driveway and garage, ideal for multiple vehicles, while sitting majestically on a large corner plot, providing privacy and tranquillity. As you step inside, you are greeted by a thoughtfully designed layout featuring a lounge area with a balcony overlooking the surroundings, perfect for relaxation and entertainment. The property also showcases a bathroom with a separate W/C, enhancing convenience, and a generous kitchen space equipped with fixtures and standing appliances. Only moments away from local amenities, this property offers the perfect blend of seclusion and convenience, making it an ideal retreat for discerning buyers seeking an upscale lifestyle.

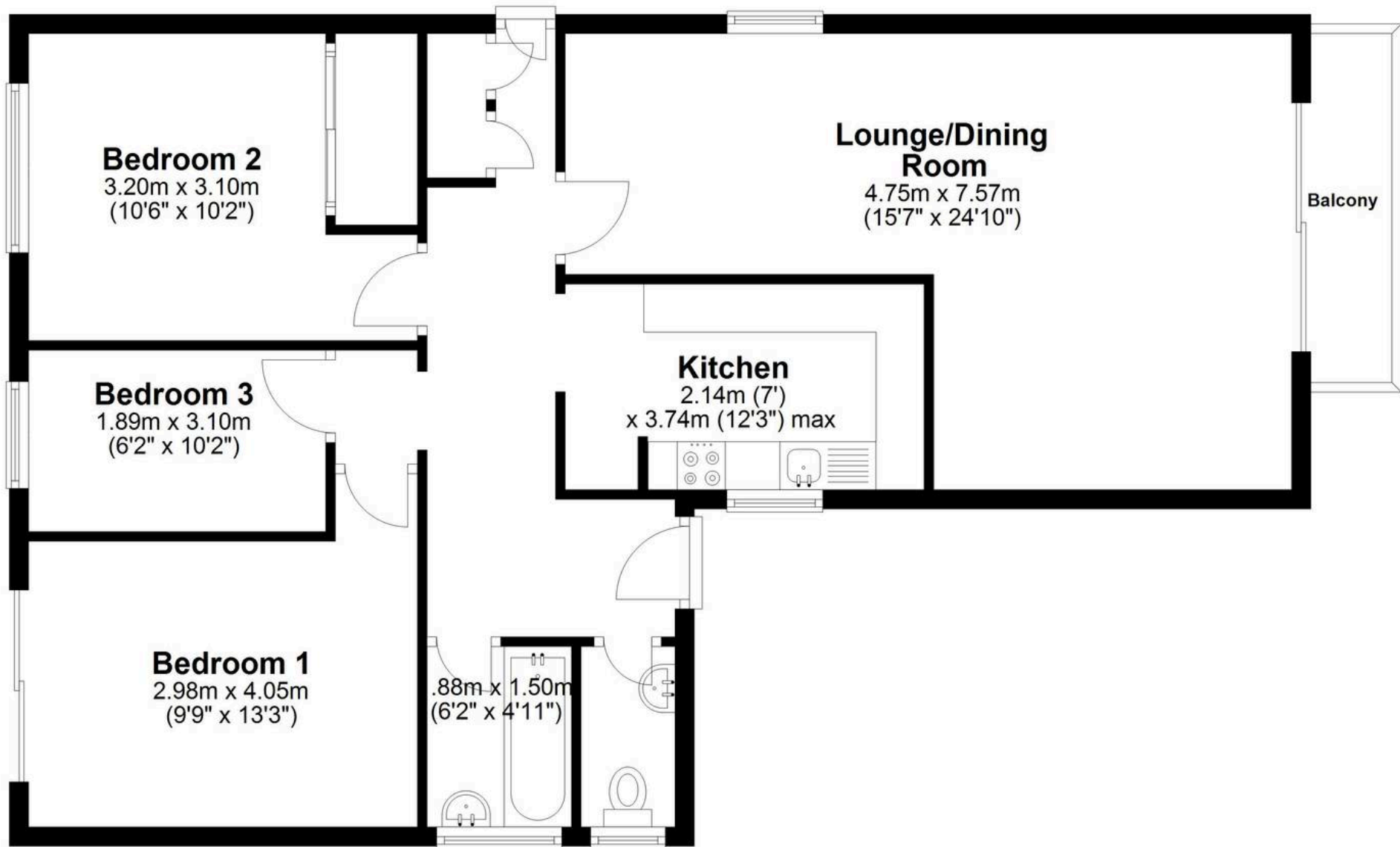
The property's outdoor space presents endless opportunities for personalisation and entertainment, with a meticulously landscaped garden that provides a serene backdrop for outdoor gatherings or simply unwinding in nature's embrace. The expansive grounds offer the perfect canvas for creating your own outdoor sanctuary, whether it's setting up al fresco dining areas, installing a play area, or cultivating a vibrant garden retreat.





Ground Floor

Approx. 86.2 sq. metres (927.5 sq. feet)



Total area: approx. 86.2 sq. metres (927.5 sq. feet)

Davenham, Plymouth



Atwell Martin

Atwell Martin, 65 Southside Street – PL1 2LA

01752 202121

plymouthsales@atwell-martin.co.uk

plymouth.atwellmartin.co.uk/

Atwell Martin Plymouth endeavour to ensure the accuracy of property details produced and displayed. Please note that we have not tested any apparatus, equipment, fixtures, fittings or services and so cannot verify that they are connected, in working order or fit for purpose. It is imperative that the buyer of any property makes such checks, prior to purchase so as to satisfy themselves of the properties suitability for their purchase. .

