

Love Homes



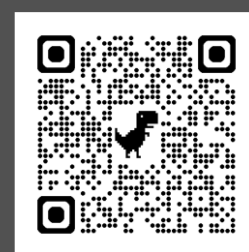
Butler Drive, Lidlington, Bedfordshire MK43 0UQ

This charming three-bedroom end-of-terrace home offers spacious living areas in a desirable modern development near the countryside. Perfect for upsizing or downsizing in a village setting, it features bright interiors. The ground floor includes an entrance lobby, cloakroom, living room, and a kitchen/dining room with French doors to the garden. Upstairs, the main bedroom has built-in wardrobes and an en-suite shower room, plus two more bedrooms and a family bathroom. Additional features: double-glazed windows, gas central heating, a lawned rear garden, allocated parking, and a playground.



This property is presented by Duncan Stead - a Love Homes property expert with over 25 years' experience.

Find out more about this property by scanning the QR code.



5.0m



3



1



2

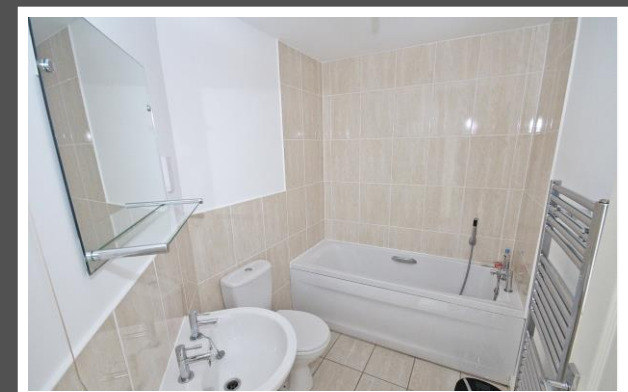
Tenure: Freehold

Council Tax: C





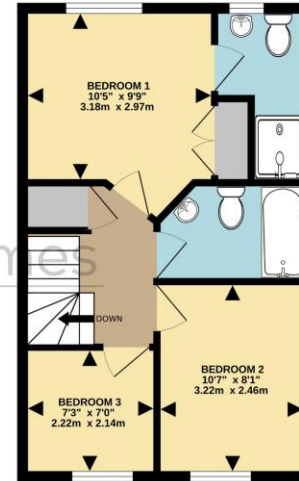
Lidlington village is conveniently located between the major towns of Bedford and Milton Keynes. Commuters can reach London St Pancras from nearby Flitwick or Bedford. The village itself offers rail services to both Bedford and Bletchley. Major road links via the M1, J13 are less than a ten-minute drive away. Local amenities include a convenience store, public house/eateries, and sports clubs and facilities. The area is surrounded by bridleways and footpaths, including the 'Greensand Ridge' protected by the Forestry Commission. Nearby attractions include the 'Forest Centre' and 'Millennium Country Park' in Marston Moretaine, less than five minutes away by car, and the Georgian town of Ampthill with its numerous services and facilities.



GROUND FLOOR
392 sq.ft. (36.4 sq.m.) approx.



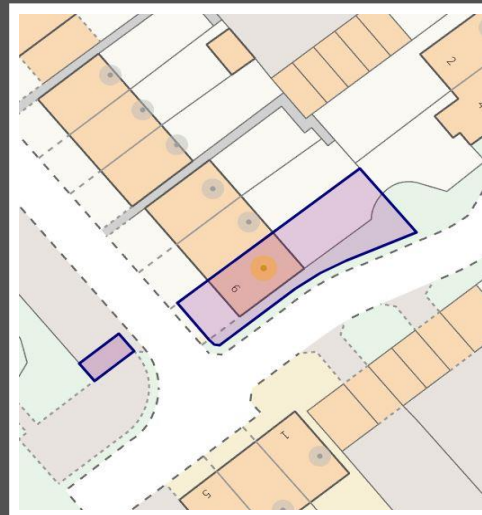
1ST FLOOR
393 sq.ft. (36.5 sq.m.) approx.



TOTAL FLOOR AREA: 786 sq.ft. (73.0 sq.m.) approx.
Drawn by Love Homes for illustrative purposes only. Measurements and areas shown are approximate.
 Made with Metropix ©2024

Score	Energy rating	Current	Potential
92+	A		
81-91	B		
69-80	C		
55-68	D		
39-54	E		
21-38	F		
1-20	G		

EPC RATING
TO FOLLOW



These particulars are set out as a general outline in accordance with the Property Misdescriptions Act (1991) only for the guidance of intending purchasers or lessees, and do not constitute any part of an offer or contract. Details are given without any responsibility, and any intending purchasers, lessees or third parties should not rely on them as statements or representations of fact but must satisfy themselves by inspection or otherwise as to the correctness of each of them. We have not carried out a structural survey and the services, appliances and specific fittings have not been tested. All photographs, measurements, floor plans and distances referred to are given as a guide only and should not be relied upon for the purchase of carpets or any other fixtures or fittings. Gardens, roof terraces, balconies and communal gardens as well as tenure and lease details cannot have their accuracy guaranteed for intending purchasers. Lease details, service ground rent (where applicable) are given as a guide only and should be checked and confirmed by your solicitor prior to exchange of contracts. No person in the employment of Love Homes has any authority to make any representation or warranty whatever in relation to this property. Purchase prices, rents or other prices quoted are correct at the date of publication and, unless otherwise stated, are exclusive of VAT. We retain the copyright in all advertising material used to market this Property. All information is as advised by the seller and subject to change. Council tax bands can be subject to change by the local council.

5 The Russell Centre, Coniston Road, Flitwick, MK45 1QY
 Tel: 01525 713111

Email: flitwick@lovehomes.uk

www.lovehomes.uk



Love Homes