



Stradbroke Grove, Clayhall, IG5

£499,995



CHAIN FREE PROPERTY

2 Double Bedrooms & Generous 3rd Bedroom

Large Bright Through Lounge/Dining Area

Downstairs WC

Modern Family Bathroom

Private Garden

Rear Extension

Off Street Parking

Parkhill & Beal School Catchment



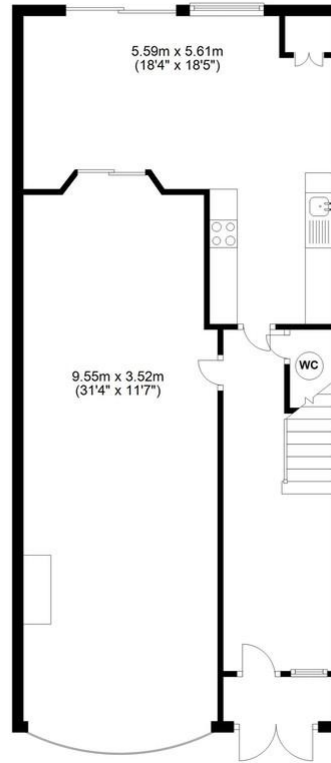


****CHAIN FREE**** Located on Stradbroke Grove, bordering the Woods Estate is this extended, 3 bedroom terraced house which offers generous size living space throughout. The property does require updating, but this has been reflected in the current asking price. It further benefits from a large through lounge which is bright and airy, a downstairs WC, off street parking to the front and a garden to the rear. Council Tax Band: E, EPC Rating: C

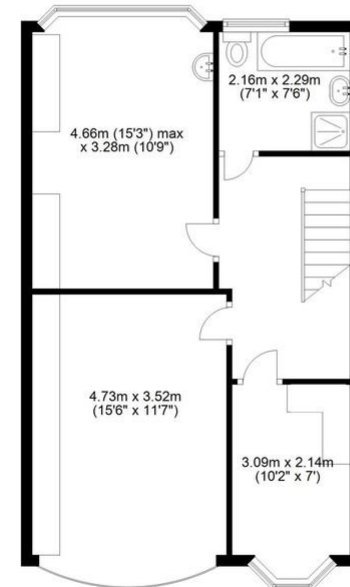




Ground Floor



First Floor



Total area: approx. 127.6 sq. metres (1373.2 sq. feet)

Score	Energy rating	Current	Potential
92+	A		
81-91	B		86 B
69-80	C	72 C	
55-68	D		
39-54	E		
21-38	F		
1-20	G		

PLEASE NOTE: These particulars are prepared as a general guide in accordance with the Property Misdescriptions Act (1991) and are not intended to constitute part of an offer or contract. Whilst every effort has been made to ensure their accuracy, no responsibility is taken for error. Appliances and fittings have not been tested. All measurements shown are estimates only and should not be relied upon for the purchase of carpets or any other fixtures or fittings.

Please contact our office at

176 Longwood Gardens
 Ilford, Essex
 IG5 0EW
 02082201500



DAYS A WEEK



FREE VALUATIONS



FLOOR PLANS



FULL COLOUR PHOTOGRAPHY



SMS TEXT ALERTS



MORTGAGE ADVICE



COLOUR MAPS

sovereign-house.com
 homes@sovereign-house.com

Victoria Park Sales
 213 Victoria Park Road
 London E9 7HD
 Tel: 020 8985 5800



@sovereignhouse



www.facebook.com/sovereignhousehackney

Clayhall/Redbridge Sales
 176 Longwood Gardens,
 Essex IG5 0EW
 Tel: 020 8220 1500

