

8 Sir Thomas White Close, Warwick
Warwick



£190,000



8 Sir Thomas White Close

Warwick, Warwick

Council Tax band: C

Tenure: Leasehold

- No Chain
- Two Bedrooms
- Ground Floor
- Master Bedroom with En-Suite
- Ideal for First-Time Buyers or Investors
- Allocated Off-Road Parking
- Walking Distance to Town Centre
- Double Glazed Windows
- Central Heating





RDR DASSAUR

This beautifully situated two-bedroom apartment offers an excellent opportunity for first-time buyers or investors. Located within proximity to Warwick town centre, this ground floor apartment provides easy access to local amenities, the motorway, and convenient public transport links to Leamington Spa and Birmingham. The development's proximity to the canal offers scenic walks, and a charming independently owned pub is just around the corner.

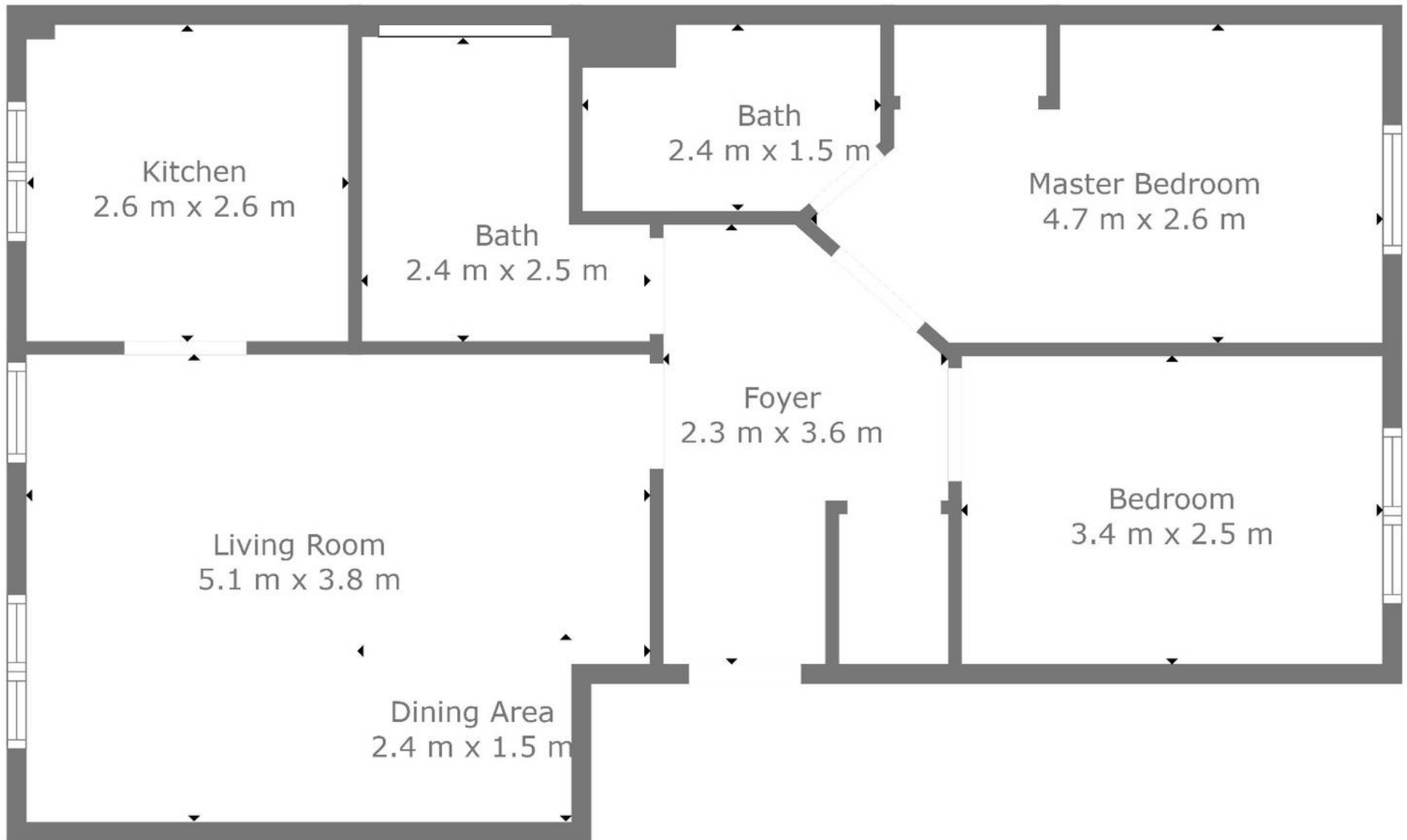


RDR DASSAUR



RDR DASSAUR





TOTAL: 64 m²
FLOOR 1: 64 m²



RDR Dassaur estate agents

Unit 2 Nelson Dale Wharf Street, Warwick - CV34 5LB

01926268989

Admin@RDRDassaur.co.uk

rdrdassaur.co.uk/

