

**DEDMAN  
GRAY**

[www.dedmangray.co.uk](http://www.dedmangray.co.uk)

Scan here  
for sales brochure



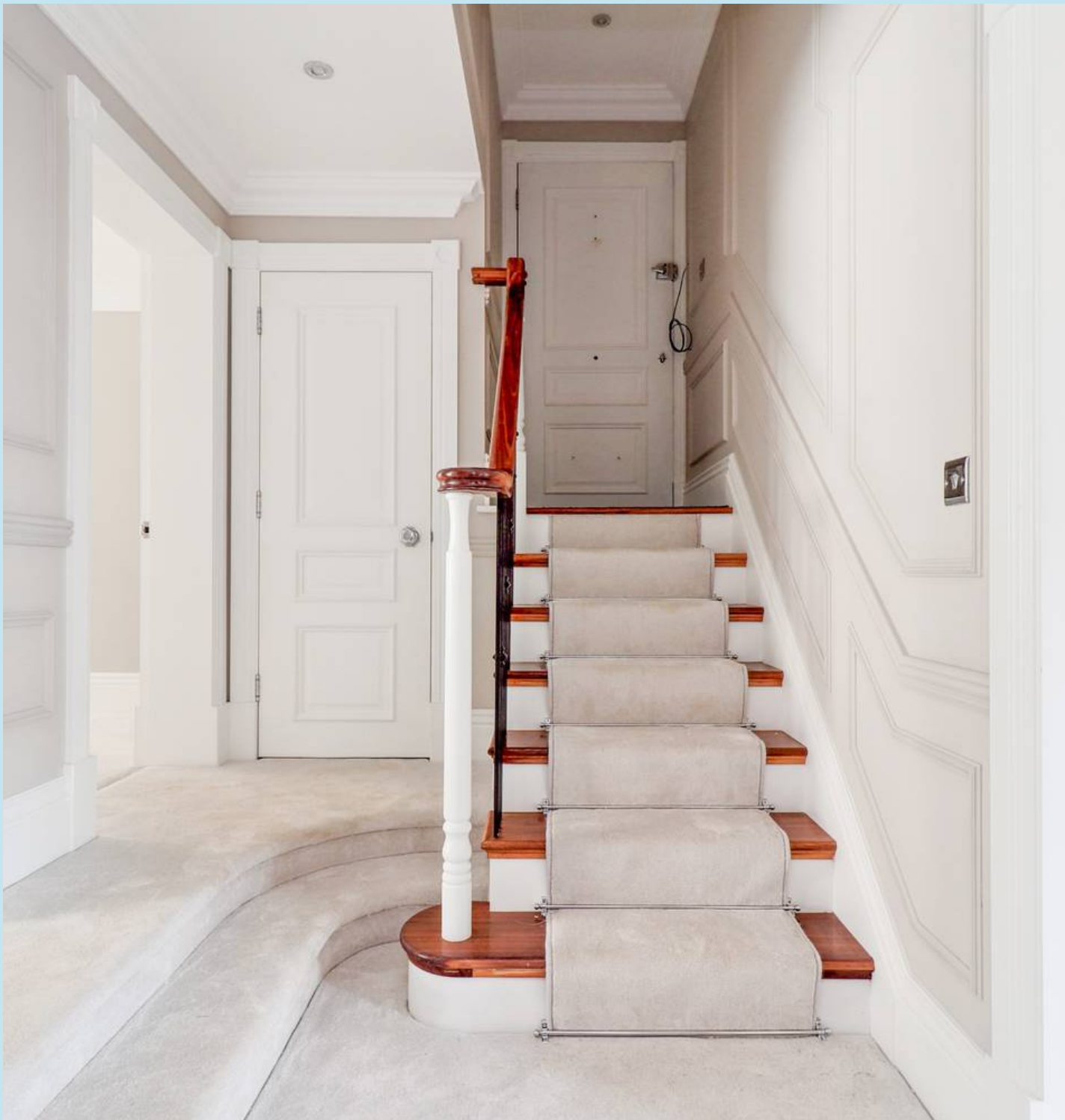
Sales  
now  
open

  
**BEECROFT**  
APARTMENTS  
By Property Point Homes

Contact  
**DEDMAN  
GRAY**  
01702 311042

Flat 7 Beecroft Apts Station Road, Westcliff on Sea

Share of freehold - £550,000



Iconic landmark restored to Edwardian residence featuring 9 luxury apartments with bespoke finishes, lift access, south-facing balcony, estuary views, and vendor-paid parking permit. A blend of elegance, convenience, and heritage in a prime urban location.

Tenure: Share of Freehold

- Restored Edwardian detached iconic landmark (former Beecroft Art Gallery)
- 2 Bedroom second floor apartment
- 9 Luxury Victorian style 2 & 3 bedroom apartments
- Kitchen/Living/Dining with Mark James bespoke fitted kitchen
- Walnut engineered flooring with underfloor heating
- Chatsworth & Grohe bathroom suites
- Lift to all floors
- Share of freehold
- South facing balcony
- The vendor will pay for a 10-year parking permit

### **Entrance**

Entrance via double doors which leads to the grand entrance hall with stairs and lift that lead to all floors. Black timber bespoke entrance door with polished chrome furnishings which leads to:

### **Hallway**

Walnut engineered flooring with underfloor heating, Victorian style wood panelling, dado rail, coving to smooth plastered ceiling with downlights.

### **Kitchen/Lounge/Diner**

Hardwood sash double glazed windows to front with estuary views and double doors leading to the balcony. Bespoke Mark James kitchen features an Edwardian style hand painted Ash door on a walnut effect cabinet, decorative pilasters, dentil rail and cornice, white quartz worktop with inset Rangemaster Belfast Butler sink with Perrin & Rowe tap, built in NEFF appliances which include hob with extractor fan over and separate oven, integrated fridge/freezer, walnut engineered flooring with underfloor heating, ornate coving to smooth plastered ceiling with downlights.

### **Bedroom 1**

Sash bay windows leading to the rear, new carpets with underfloor heating, ornate coving to smooth plastered ceiling with ceiling rose.

### **Luxury En Suite Shower**

Luxury suite comprising of a shower cubicle with rainfall shower over, vanity unit with mixer taps, low flush WC, smooth plastered ceiling with downlighters and tiled floor with underfloor heating.

### **Bedroom 2**

Hardwood double glazed sash windows to rear, new carpet with underfloor heating, ornate coving to smooth plastered ceiling with downlighters.





### **Luxury Bathroom**

This elegant luxury bathroom has a free-standing roll top slipper bath with mixer taps and shower attachment, vanity unit with mixer taps, low flush WC, half tiled walls, large circular LED wall mounted mirror, white diamond mosaic flooring.

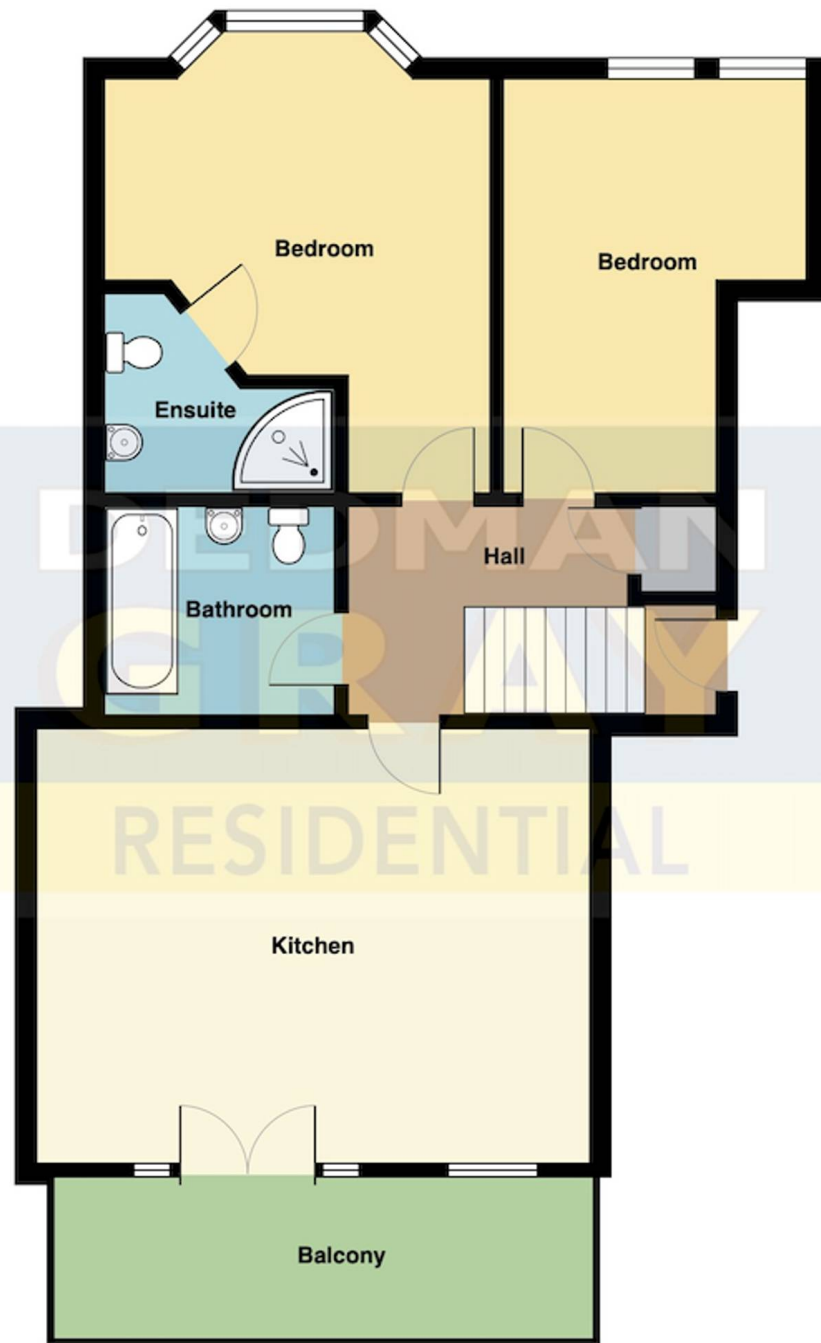
### **Balcony**

This luxury apartment has its own private south facing balcony offering superb estuary views.

### **PERMIT**

1 Parking Space

We are advised that the vendor will pay for a 10-year parking permit.



Unit 7



## Dedman Gray

Dedman Gray, 103 The Broadway - SS1 3HQ

01702 311042

[sales@dedmangray.co.uk](mailto:sales@dedmangray.co.uk)

<http://www.dedmangray.co.uk>

