

CHALET DEVELOPMENT

VORLICH ROAD, LOCHEARNHEAD, FK19 8PT

CHALET
SITE

LivingGeddes
W.S. • Solicitors • Estate Agents



LODGE PLOT, VORLICH ROAD, LOCHEARNHEAD, FK19 8PT

Irving Geddes are delighted to offer for sale this development site with planning for three timber chalets and parking (holiday use only), located within the picturesque village of Lochearnhead, set at the western end of Loch Earn. Set amidst an area of striking natural beauty, within the Loch Lomond & Trossachs National Park, Lochearnhead is a popular destination for water-sport enthusiasts, mountain bikers and climbers. Ideally located with excellent road links to Crieff (18mls), Stirling (28 mls), Glasgow (55 mls) & Edinburgh (65 mls).

The site is conveniently located set back from the main road, offering a good degree of privacy and extends to approx. $\frac{1}{4}$ of an acre. Permission has been granted for the erection of 3 attractive 1.5 storey lodges with parking. Interested parties are welcome to visit the site.

Full details of planning documentation can be viewed here:

<https://eplanning.lochlomond-trossachs.org/OnlinePlanning/applicationDetails.do?activeTab=documents&keyVal=RQDCXFSII3A00>







West Elevation



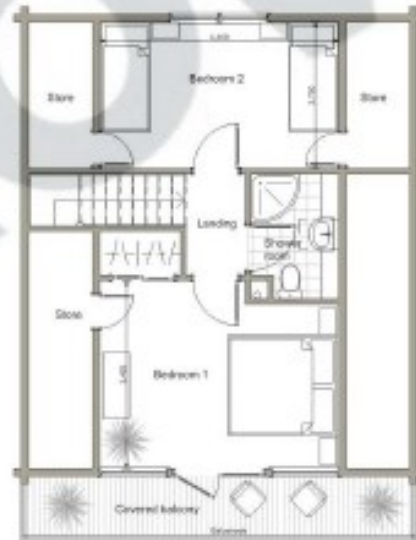
East Elevation



North Elevation



Ground Floor Plan - Chalets 1 + 2



First Floor Plan



South Elevation

LODGE 1 & 2 - FLOORPLANS & ELEVATIONS



North West Elevation



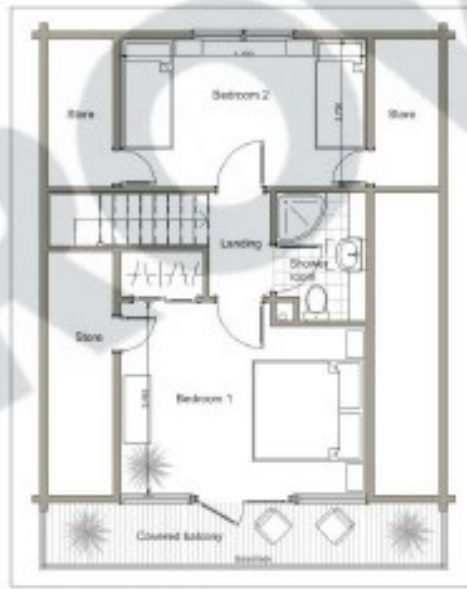
South West Elevation



North East Elevation



Ground Floor Plan - Chalet 3



First Floor Plan



South East Elevation



These particulars are believed to be correct, but their accuracy is not guaranteed and they do not form part of any contract.
 All measurements are approximate only.





Crieff

26 West High Street, PH7 4AU
Tel: 01764 653771

Comrie

1 Drummond Street, PH6 2DW
Tel: 01764 670325

Aberfeldy

6 The Square, PH15 2DD
Tel: 01887 822722