

10 PARK VILLAGE, CRIEFF, PH7 4JN

GUIDE PRICE £125,000



10 Park Village, Crieff, PH7 4JN

Irving Geddes are delighted to offer for sale this spacious two double bedroom park home enjoying an elevated position within a popular development, adjacent to parkland and the sought after Turretbank area of Crieff. The layout comprises; ENTRANCE HALL, LOUNGE, DINING ROOM, Breakfasting KITCHEN, TWO DOUBLE BEDROOMS (MASTER with EN-SUITE SHOWER), small STUDY & BATHROOM. The property is warmed by mains gas central heating and is double-glazed throughout.

Externally there is private parking for two vehicles and areas of garden ground to the front and side of the property. Aimed at those 50 & over, the park is located on the western edge of the ever popular market town of Crieff, enjoying a quiet situation yet within easy reach of the town centre. Site fees (currently £214 pcm) cover ground rent, site warden, general maintenance and lighting of common areas.

Directions

Continue through Crieff, on the A85 signposted for Comrie. Turn left into Turretbank Road and after approximately 300 yards turn left again into Park Village. Take the second turning on the left, & number 10 is located half way down on the left side.



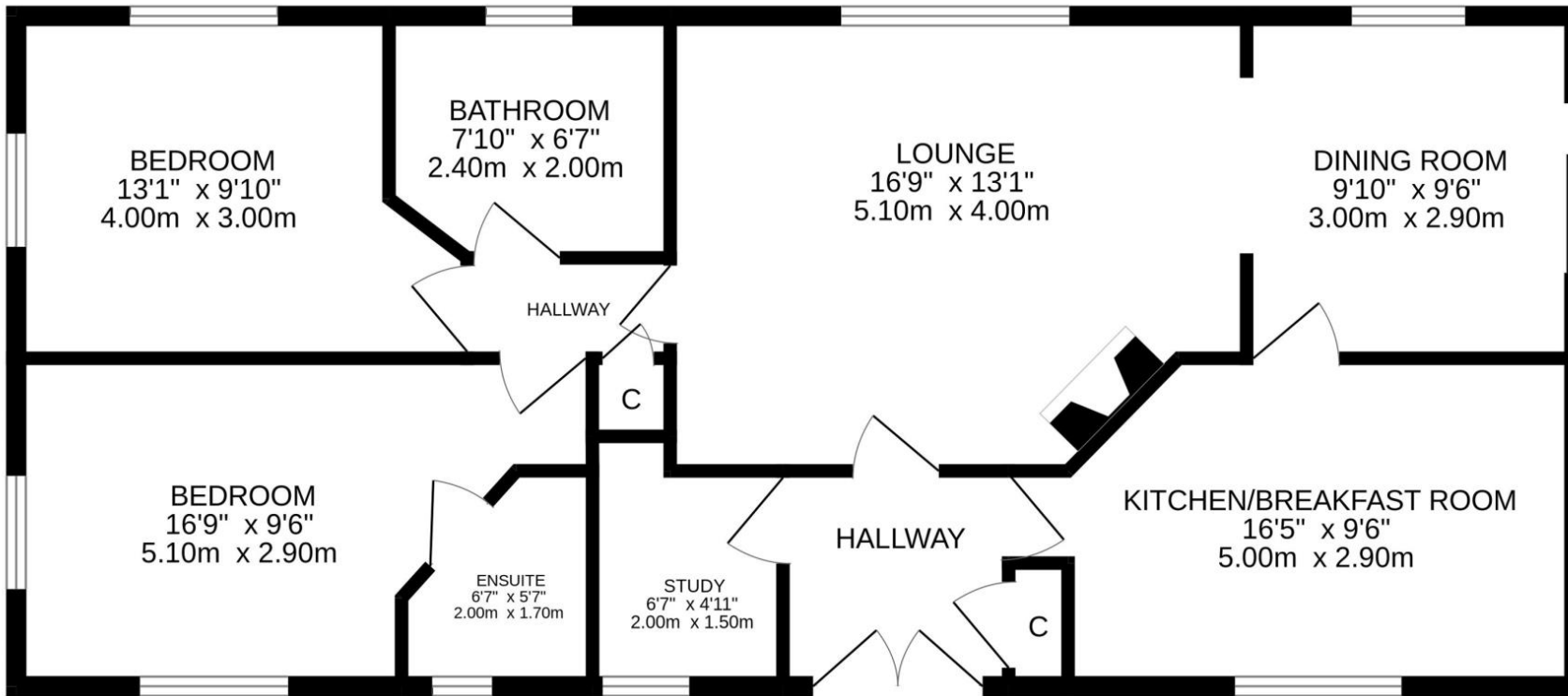












Viewing Strictly by appointment through Irving Geddes on 01764 653771.

These particulars are believed to be correct, but their accuracy is not guaranteed and they do not form part of any contract. All measurements are approximate only.



Directions

Continue through Crieff, on the A85 signposted for Comrie. Turn left into Turretbank Road and after approximately 300 yards turn left again into Park Village. Number 10 is located on the left side half way down.