



Chislehurst Road

Sidcup
DA14 6BG

Leasehold

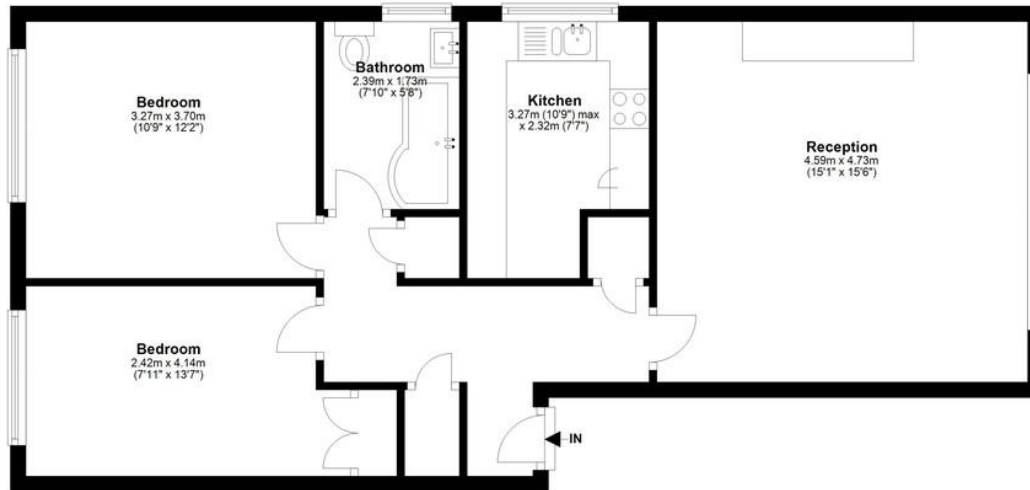
Spacious and well presented two double bedroom top floor apartment
Long lease in excess of 900 years
Chain free
Ideal first time buy or buy to let investment opportunity
Garage en bloc & space in front

Local Authority Bexley London Borough
Council
Council Tax Band C
EPC Rating D

Lease 942 years remaining
Service Charge £1776 per annum
Ground Rent £25 per annum



Second Floor
Approx. 66.4 sq. metres (714.9 sq. feet)



Total area: approx. 66.4 sq. metres (714.9 sq. feet)
Wood Place, Sidcup

FOR ILLUSTRATIVE PURPOSES ONLY. NOT TO SCALE
Whilst every attempt has been made to ensure the accuracy of the floor plan shown, all measurements, positioning, fixtures, features, fittings and any other data shown are an approximate interpretation for illustrative purposes only and are not to scale. No responsibility is taken for any error, omission, mis-statement or use of data shown.
The above statement applies to both: Lucia London Photography LTD and the Company or individual displaying this floor plan.
(c) Lucia London Photography LTD unauthorised reproduction prohibited.

Drewery Property Consultants
128 Station Road
Sidcup
Kent
DA15 7AF

Contact
020 8269 6605
info@drewery.co.uk
www.drewery.co.uk

Agents Note: Whilst every care has been taken to prepare these particulars, they are for guidance purposes only. All measurements are approximate and are for general guidance purposes only and whilst every care has been taken to ensure their accuracy, they should not be relied upon and potential buyers/tenants are advised to recheck the measurements.