



BBRIDGES
PROPERTIES
Your Property, Our Priority
FOR SALE

15 Mickel Crescent, Whitburn

Bathgate

Offers Over £210,000



15 Mickel Crescent

Whitburn, Bathgate

Welcome to this charming 3-bedroom semi-detached home located in the ever-popular Heartlands development in Whitburn. Presented in fantastic condition, this delightful property offers a perfect blend of modern living and comfort. Boasting a generous south-facing garden, a driveway, and a garage, this home is ideal for families and professionals alike.

As you enter the property, you are greeted by a welcoming hallway leading to a spacious lounge, perfect for relaxation and entertaining. The lounge flows seamlessly into the modern kitchen, which is well-appointed with ample storage and workspace. A convenient downstairs WC completes the ground floor.



Upstairs, you will find three well-proportioned bedrooms. The master bedroom offers a peaceful retreat with plenty of space for furnishings and includes an en-suite shower room for added convenience.

The additional two bedrooms are also spacious rooms, making them perfect for children, guests, or a home office.

The family bathroom is stylishly designed, providing all the necessary amenities.

Externally, the property features a large south-facing garden, ideal for outdoor activities and enjoying sunny days. The driveway and garage provide ample parking and storage space.

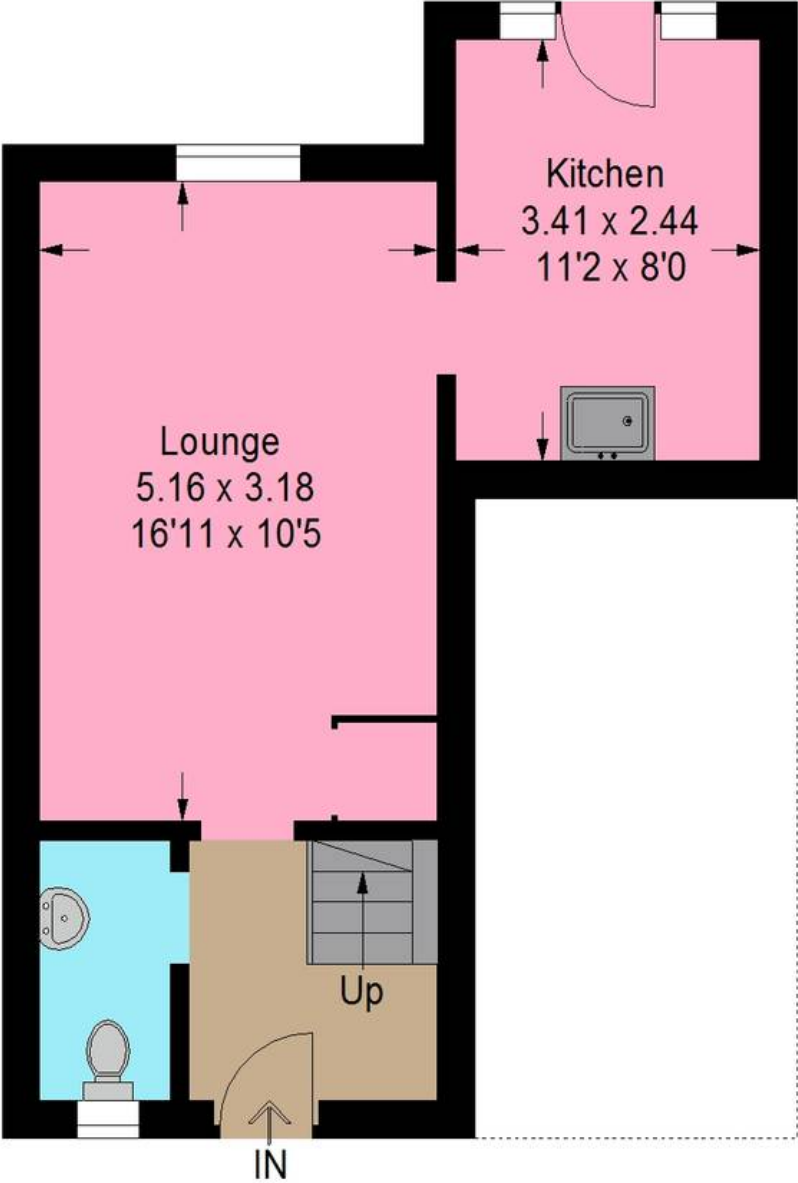
This home is situated in a highly sought-after development, offering easy access to local amenities, schools, and transport links.

Don't miss the opportunity to make this fantastic property your new home. Contact us today to arrange a viewing!

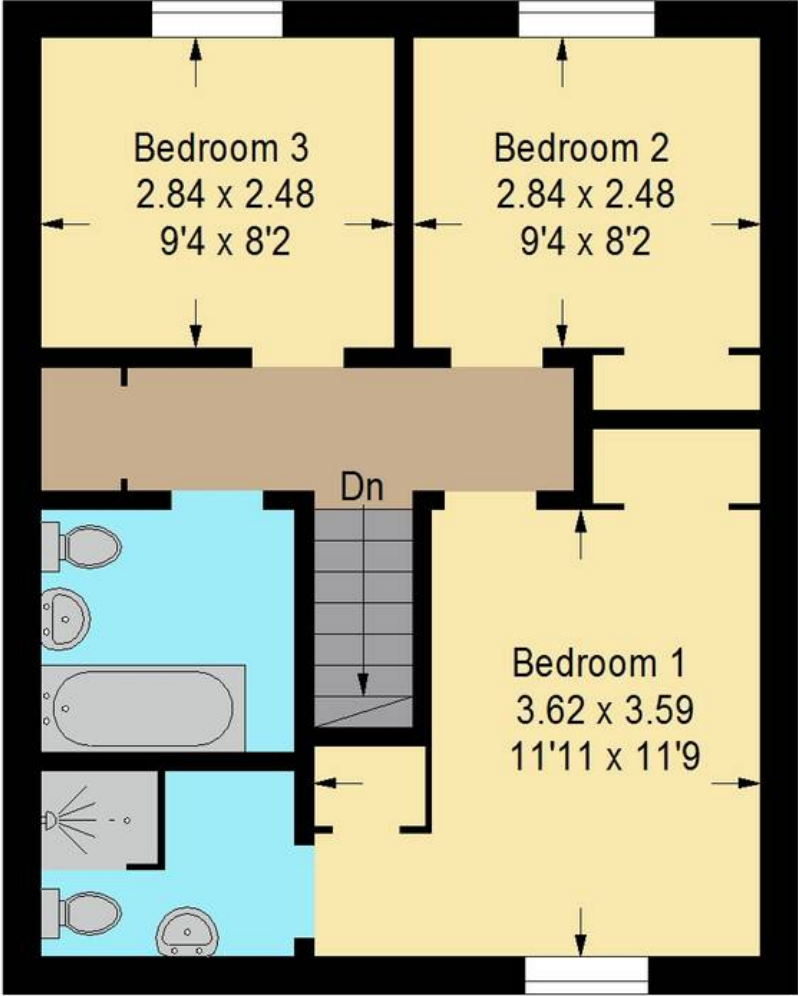




Approximate Gross Internal Area = 75.6 sq m / 814 sq ft



Ground Floor



First Floor

Illustration For Identification Purposes Only. Not To Scale (ID:1108263 / Ref:88777)



Bridges Properties

94 West Main Street, Whitburn - EH47 0QU

01501519435

info@bridges-properties.co.uk

www.bridges-properties.co.uk/

