



Gore Avenue

Salford



Offers Over £350,000

Gore Avenue

Salford

Available with NO VENDOR CHAIN is this UNIQUE, three bedroom DETACHED family home! Overlooking Buile Hill Park to the front and benefitting from a large plot, this property would make a great family home!

Council Tax band: C

Tenure: Freehold

- Unique Three Bedroom Detached Family Home
- Benefitting from Beautiful Views Over Buile Hill Park to the Front
- Situated on a Generous Plot, with the Potential to Extend Subject to Planning Permission (STPP)
- Tastefully Decorated, Bay-Fronted Lounge
- Large, Open Plan Kitchen Diner with Modern Fitted Units, a Kitchen Island and Patio Doors to the Rear
- Three Double Bedrooms
- Contemporary, Four-Piece Family Bathroom
- Large Resin Driveway to the Front and Side Providing Off-Road Parking for Multiple Cars
- Electric Gates to the Front Providing Security and Privacy
- Close to Excellent Transport Links Throughout Manchester, Including into Salford Quays, Media City and Manchester City Centre



HILLS

Entrance Hallway

11' 10" x 8' 1" (3.60m x 2.46m)

Featuring a ceiling light point. Complete with door access to the lounge, dining room and kitchen.

Lounge

11' 2" x 13' 11" (3.40m x 4.24m)

Featuring a ceiling light point, double glazed bay window to the front, wall mounted radiator and laminate flooring.

Kitchen Diner

12' 11" x 20' 7" (3.94m x 6.27m)

Featuring a fantastic centre island with a range of wall and base units complete with integrated appliances including fridge freezer, dishwasher, washing machine, dryer, microwave, double oven, gas hob and extractor. Complete with ceiling spotlights, double glazed window, patio doors opening onto the rear garden and laminate flooring

Landing

Complete with a ceiling light point and carpet flooring.

Bedroom One

11' 2" x 11' 3" (3.40m x 3.43m)

Featuring a ceiling light point, double glazed window to the rear of the property. Fitted with carpet flooring.

Bedroom Two

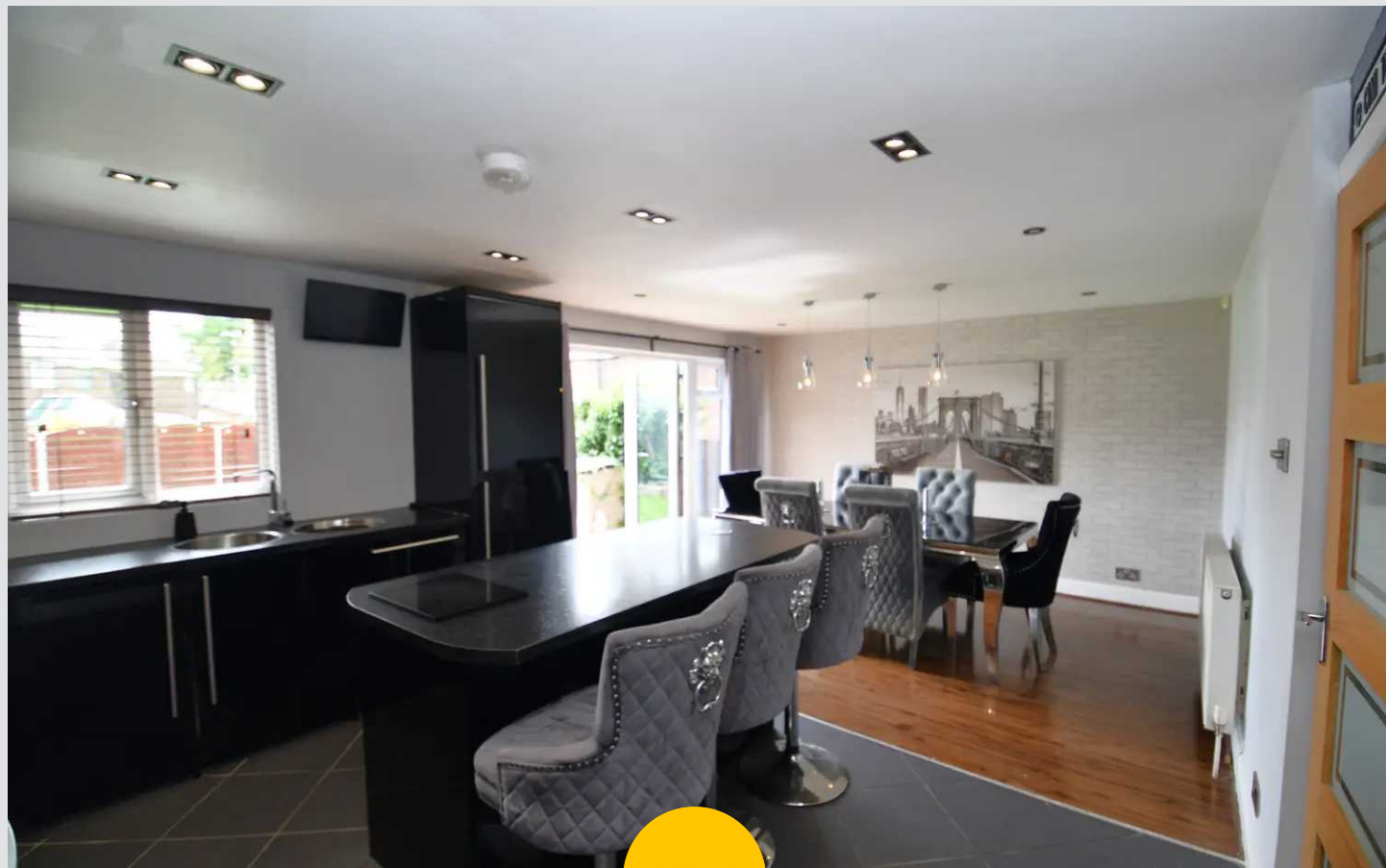
11' 2" x 13' 0" (3.40m x 3.96m)

Featuring a ceiling light point, double glazed window to the rear of the property. Fitted with carpet flooring.

Bedroom Three

(2.16m x 2.92m)

Complete with a ceiling light point, double glazed window and wall mounted radiator. Fitted with carpet flooring.



HILLS



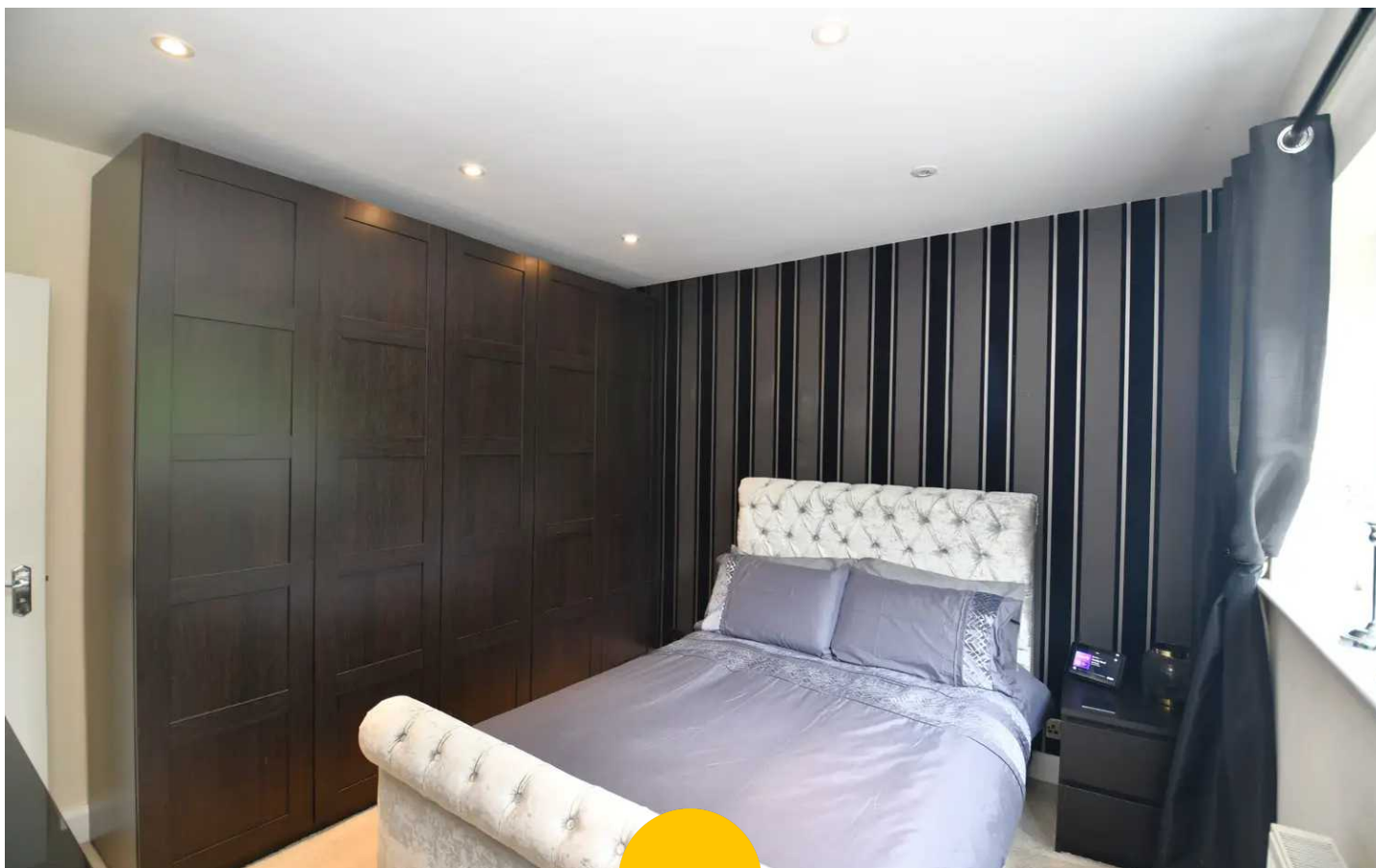
Bathroom

8' 7" x 5' 9" (2.62m x 1.75m)

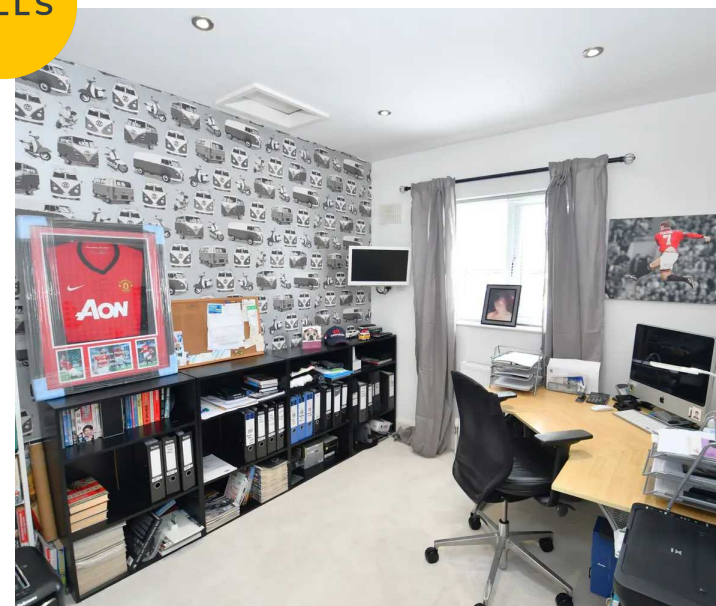
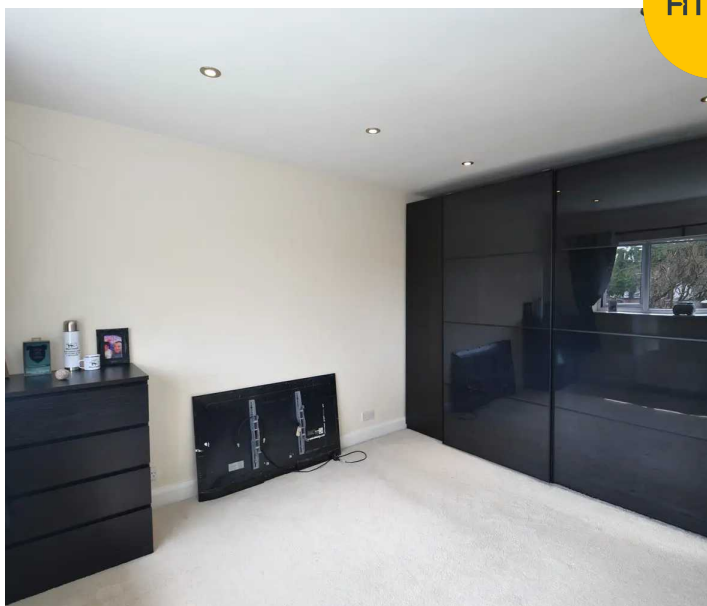
Featuring a four-piece suite including low level w/c, pedestal hand wash basin, panel bath and shower cubicle. Complete with a frosted single glazed window to the side. Fitted with a splash back tiling.

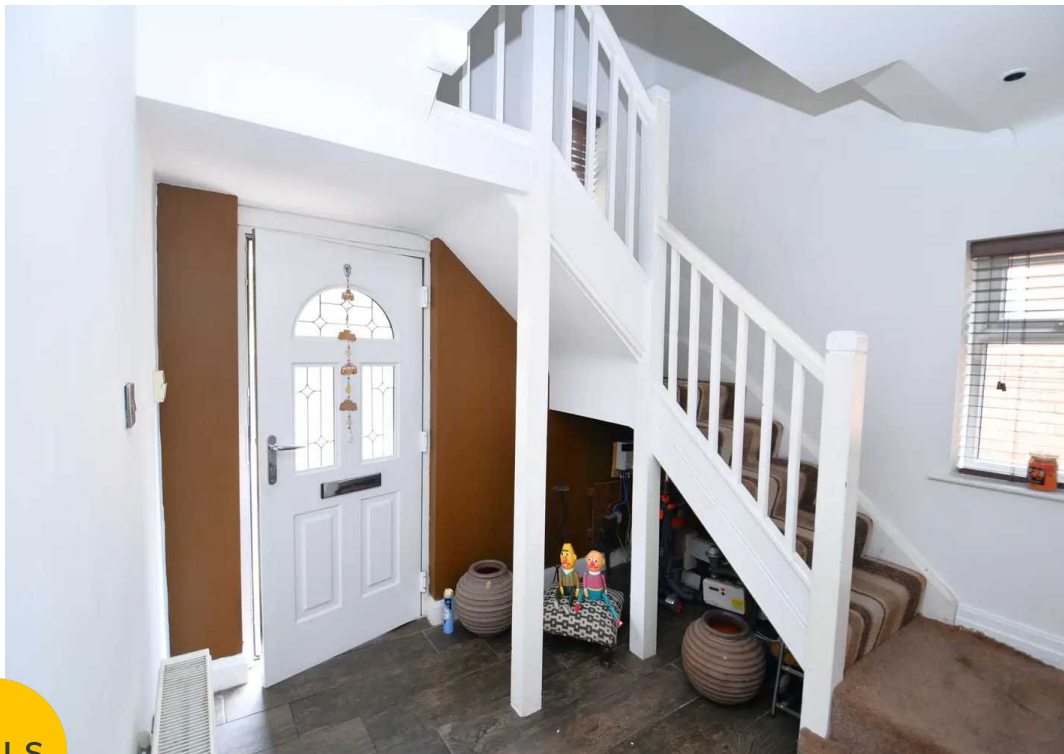
External

To the front of the property is a driveway leading up to the side of the property and the garage. Complete with a small front garden which is partly lawned with various plants and shrubs to border. To the rear of the property is a mainly laid lawn with various plants and shrubs to borders.



HILLS





HILLS







Hills | Salfords Estate Agent

Hills Residential, Sentinel House Albert Street - M30 0SS

0161 707 4900

sales@hills.agency

www.hills.agency/



THE PROPERTY MISDESCRIPTIONS ACT 1991 The Agent has not tested any apparatus, equipment, fixtures and fittings or services and so cannot verify that they are in working order or fit for the purpose. A Buyer is advised to obtain verification from their Solicitor or Surveyor. References to the Tenure of a Property are based on information supplied by the Seller. The Agent has not had sight of the title documents. A Buyer is advised to obtain verification from their Solicitor. You are advised to check the availability of this property before travelling any distance to view. Every effort and precaution has been made to ensure these particulars are correct and not misleading but their accuracy is not guaranteed nor do they form part of any contract. If there is any point which is of particular importance to you, please contact us and we will provide any information you require. This is advisable, particularly if you intend to travel some distance to view the property. The mention of any appliances and services within these details does not imply that they are in full and efficient working order. These particulars are in draft form awaiting Vendors confirmation of their accuracy. These details must therefore be taken as a guide only.